



Serving the Children of Lawrence

BOARD OF EDUCATION AGENDA

ORGANIZATIONAL & REGULAR MEETING

July 14, 2014

The Board of Education of Lawrence Public Schools, USD 497, will meet in the Interactive Technology Center (First Floor) of the Educational Support & Distribution Center, 110 McDonald Drive, Lawrence, Kansas, at 7 p.m.

Call to Order

Approval of Agenda

Reorganization of Board

Election of President

Election of Vice President

Oath of Office

Recognition of Audience

CONSENT AGENDA (ITEMS MARKED WITH *)

Consent agenda items are those that are considered routine and are adopted by one motion, unless any Board Member or the Superintendent requests that an item be removed. The item/items removed are voted on separately.

Motion: I move the Board adopt the items listed on the Consent Agenda.

Organization Authorizations*

1. Appointment of Board Clerk, District Treasurer, Deputy Clerk and Deputy Treasurer for 2014-2015 School Year
2. Adoption of Board Meeting Calendar for 2014-2015 School Year
3. 2014-2015 District Administrative Organizational Chart
4. Designation of Official Paper and Other News Media for 2014-2015 School Year
5. Designation of Legal Counsel for 2014-2015 School Year
6. Designation of Authorized Representative(s):
 - Federal Programs
 - Attendance Officers
 - KPERS (Kansas Public Employees Retirement System)
 - Freedom of Information Officer
 - Hearing Officer for Suspension & Expulsion Appeals
7. Appointment of KASB Governmental Relations Network Representative

Board of Education Agenda, 2
July 14, 2014

Organization Authorizations* (Continued)

8. Designation of 1116 Hour School Plan
9. Designation of Depositories for 2014-2015 School Year
10. Waiver of GAAP & Fixed Asset Accounting Requirements
11. Approval of Master Services Agreement – US Bank
12. 2014-2015 Schedule of Fees
13. 2014-2015 Meal Prices
14. Participation in Child Nutrition Programs for 2014-2015 School Year
15. Adoption of Guide to Administrative Procedures (GAP) & Student Handbooks for 2014-2015 School Year

Minutes*

June 30, 2014 regular meeting

Personnel Report*

Monthly Vouchers*

Approvals*

1. Substitute Teacher Compensation
2. Nursing Contracted Services with Advocate Home Specialty Care
3. Nursing Contracted Services with Craig HomeCare
4. Renewal of Follett's Destiny Library & Textbook Management Solutions
5. Purchase of Consumable Instructional Resources for 2014-2015 School Year
6. Contract for Pacific Educational Group Professional Development for 2014-2015
7. Payment for E-Rate Solutions, LLC Consulting Services
8. Pavement Repair – East Heights
9. Amendment to Alexander Open Systems Order

Report of President of Board of Education

Report of Superintendent of Schools

Board Commentary

Reports

Online Enrollment

- Ron May, director, administrative services

Old Business

New Business

Future Land Use Planning

- Dr. Rick Doll, superintendent

Adjournment

Future Agenda Items

- Report: Counseling Services
- Approval: Bond Construction Bids – College & Career Center

Board of Education Agenda, 3
July 14, 2014

Announcements

July 28	Goal Setting Work Session, ESDC	5:30 p.m.
	Regular Board Meeting (Presentation of Budget/Approval for Publication), ESDC	7 p.m.
August 11	Budget Hearing, Regular Board Meeting (Approval of Budget), ESDC	7 p.m.

To: Board of Education

From: Dr. Rick Doll, superintendent

Re: Appointment of Board Clerk, District Treasurer, Deputy Clerk, Deputy Treasurer
for 2014-2015 School Year

Date: July 10, 2014

State law requires that each Board of Education annually appoint a board clerk and district treasurer. The administration recommends that the board approve the following appointments:

Clerk of the board — Janice Dunn

District treasurer — Kathy Johnson, director, finance

The administration further recommends that the board approve a deputy clerk and deputy treasurer to be able to sign for official business in the absence of the regularly appointed clerk and/or treasurer:

Deputy clerk — Becky May

Deputy treasurer — Pam Fraley, supervisor, accounts payable

To: Board of Education

From: Dr. Rick Doll, superintendent

Re: Adoption of Board Meeting Calendar for 2014-2015 School Year

Date: July 10, 2014

The Board of Education tentatively set the following schedule for board meetings for 2014-2015. It is being brought to you for final approval at this time.

The board designates its regular meeting place to be the Interactive Technology Center at the Educational Support & Distribution Center, 110 McDonald Drive, and its regular meeting time to be 7 p.m. on the second Monday of each month. Further, the board shall frequently meet a second time each month as shown on the calendar. The August 25, 2014 and March 23, 2015 meetings are tentative; the second meeting in May will be held on Tuesday, May 26, 2015. In addition, the board retains the right to change both time and place upon proper public notice and to adjourn any meeting to another time, day and location.

2014-2015 Board Meeting Schedule Draft

Month	Date		Time	Type of Meeting
July	14	(2nd Monday)	7:00 p.m.	Organizational/Regular meeting
	28	(4th Monday)	7:00 p.m.	Regular meeting *(Presentation of budget & Approval for publication)
August	11	(2nd Monday)	7:00 p.m.	*Budget hearing/Regular meeting *(Approval of budget)
	(25)	(4th Monday)	7:00 p.m.	(Tentative - if needed)
September	8	(2nd Monday)	7:00 p.m.	Regular meeting
	22	(4th Monday)	7:00 p.m.	Regular meeting
October	13	(2nd Monday)	7:00 p.m.	Regular meeting
	27	(4th Monday)	7:00 p.m.	Regular meeting
November	10	(2nd Monday)	7:00 p.m.	Regular meeting
	24	(4th Monday)	7:00 p.m.	Regular meeting
December	8	(2nd Monday)	7:00 p.m.	Regular meeting
January	12	(2nd Monday)	7:00 p.m.	Regular meeting
	26	(4th Monday)	7:00 p.m.	Regular meeting
February	9	(2nd Monday)	7:00 p.m.	Regular meeting
	23	(4th Monday)	7:00 p.m.	Regular meeting
March	9	(2nd Monday)	7:00 p.m.	Regular meeting
	(23)	(4th Monday)	7:00 p.m.	(Tentative - if needed)
April	13	(2nd Monday)	7:00 p.m.	Regular meeting
	27	(4th Monday)	7:00 p.m.	Regular meeting
May	11	(2nd Monday)	7:00 p.m.	Regular meeting
	*26	(4th Tuesday)	7:00 p.m.	Regular meeting
June	8	(2nd Monday)	7:00 p.m.	Regular meeting
	22	(4th Monday)	7:00 p.m.	Regular meeting

Note: KASB Annual Convention
NSBA Annual Conference

December 5-7, 2014 ~ Overland Park
March 21-23, 2015 ~ Nashville, TN

*Memorial Day 2015 is on Monday, May 25

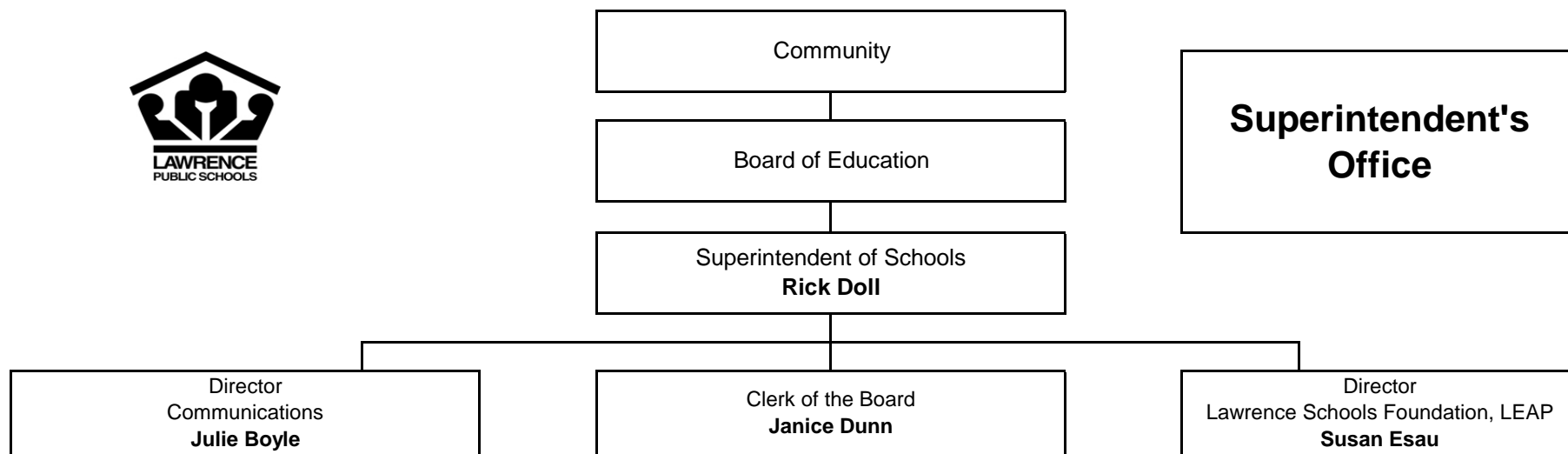
To: Board of Education

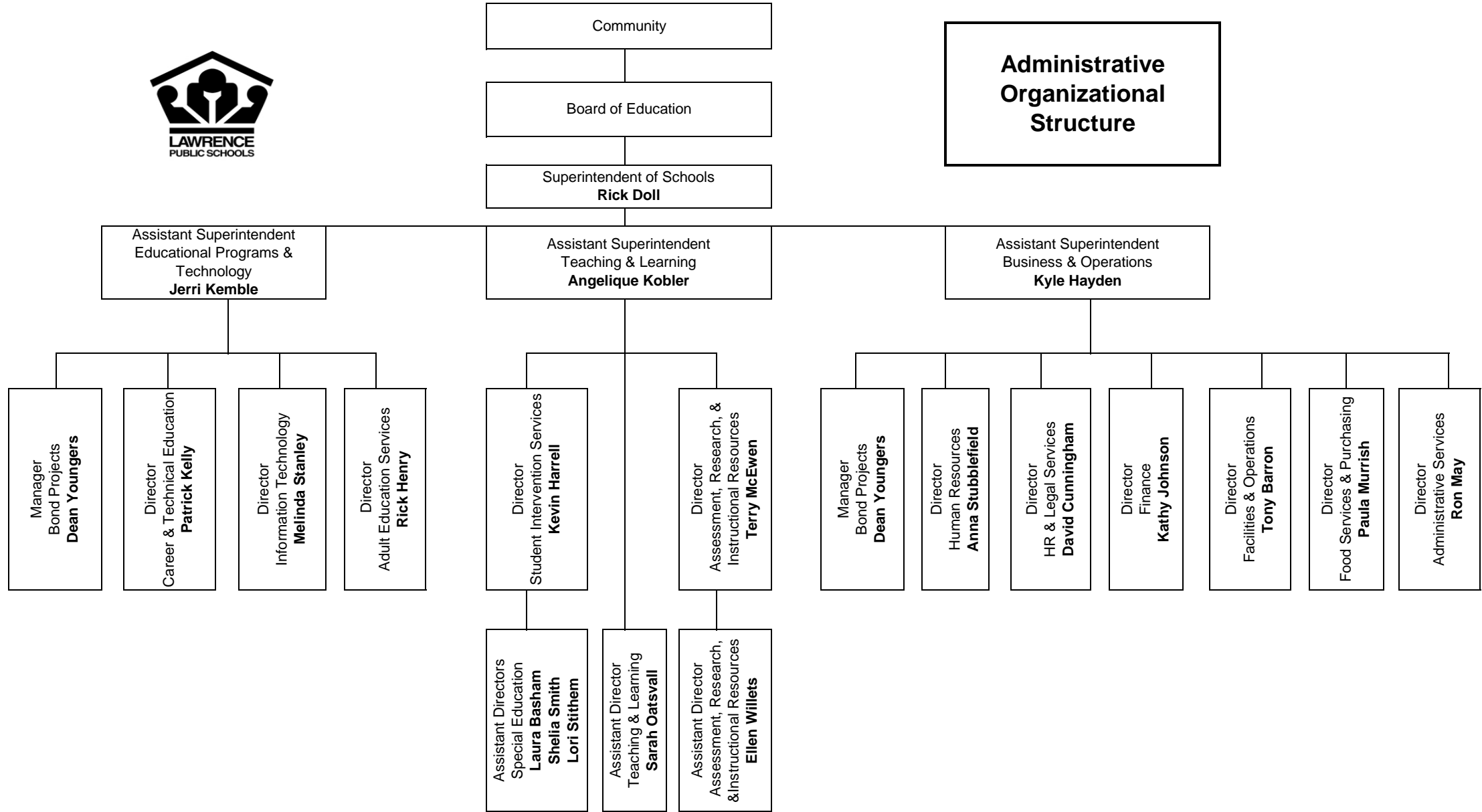
From: Kyle Hayden, assistant superintendent, business & operations, ext. 4309

Re: 2014-2015 District Administrative Organizational Chart

Date: July 10, 2014

An updated District Administrative Organizational Chart for Lawrence Public Schools is attached for review and approval by the Board of Education. The chart accurately reflects the hiring of new personnel made for the 2014-2015 school year.





Assistant Superintendent
Educational Programs & Technology
Jerri Kemble

Director
Career & Technical Education
Patrick Kelly

Director
Information Technology
Melinda Stanley

Director
Adult Education Services
Rick Henry

Educational Programs & Technology



Assistant Superintendent
Teaching & Learning
Angelique Kobler

Teaching & Learning



Assistant Director
Teaching & Learning
Sarah Oatsvall

Coordinator
Health & Wellness
Curriculum
Denise L. Johnson

Director
Student Intervention Services
Kevin Harrell

Assistant Directors
Special Education
Laura Basham
Shelia Smith
Lori Stithem

SPED Facilitators
Paige Buckingham
Amie Tripp-Bristol
Donna Patton-Bryant
Jenna Viscomi

Facilitator
Health Services
Sonja Gaumer

Coordinator
Student Intervention
Programs
Leah Wisdom

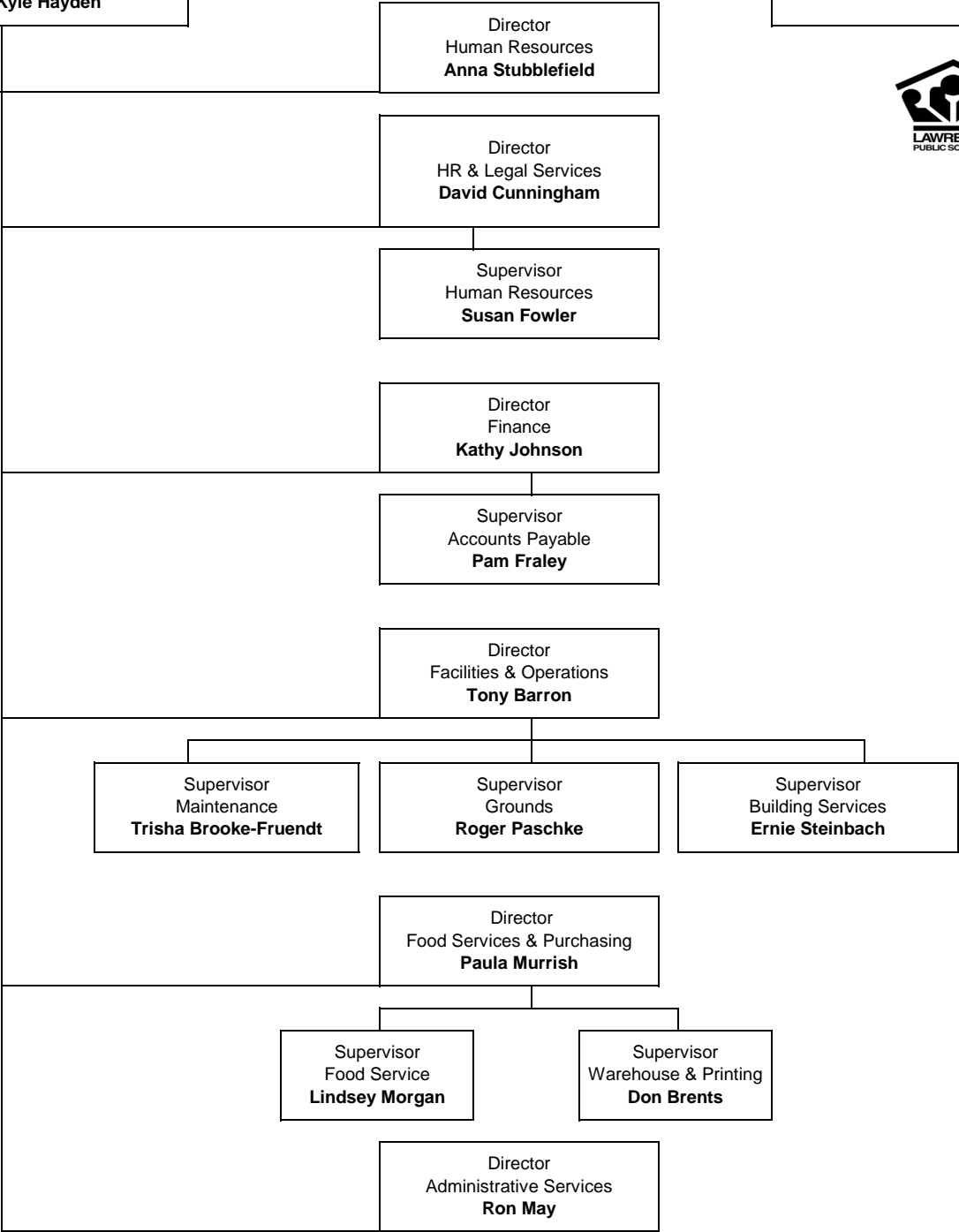
Coordinator
Native American
Services
Jennifer Attocknie

Director
Assessment, Research, &
Instructional Resources
Terry McEwen

Assistant Director
Assessment, Research, &
Instructional Resources
Ellen Willets

Assistant Superintendent
Business & Operations
Kyle Hayden

Business & Operations



To: Board of Education

From: Dr. Rick Doll, superintendent

Re: Designation of Official Paper & Other News Media for 2014-2015 School Year

Date: July 10, 2014

Throughout the school year there are occasional legal requirements for official notices to be published in connection with the affairs of the district. The wording of this requirement generally is something like the following: *"The governing body shall give ten (10) days notice... in a weekly or daily newspaper of the county having a general circulation therein, etc."* The designation of a paper by the board for such legal notices eliminates uncertainty as to which paper is to carry legal notices.

It is the recommendation of the administration that the *Lawrence Journal-World* be designated the official public newspaper of Lawrence Unified School District No. 497 for the 2014-2015 school year and that the *Lawrence Journal-World*, radio station KLWN/KLZR, and *WOW!* be recognized as official news media for the school district.

To; Board of Education

From: Dr. Rick Doll, superintendent

Re: Designation of Legal Counsel for 2014-2015 School Year

Date: July 10, 2014

Board policy provides for the appointment and compensation of the school board attorney. The policy reads, in part, as follows:

Attorney and Legal Services

BBE

"The board will retain a qualified attorney to handle all legal matters referred by the board.

"The school attorney may attend any regular meeting of the board and other meetings of the board when requested by the board or the superintendent. The school attorney shall provide legal advice and counsel to the board.

"The school attorney's contract shall establish the amount of compensation and shall be reviewed annually by the board in July."

It is recommended that the Board of Education designate Brad Finkeldei of Stevens & Brand, L.L.P., as legal counsel for the 2014-2015 school year at the rate of \$115 per hour.

To: Board of Education

From: Dr. Rick Doll, superintendent

Re: Designation of Authorized Representative/s for:

1. Federal programs
2. Attendance officers
3. KPERS (Kansas Public Employees Retirement System)
4. Freedom of Information officer
5. Hearing officer for suspension and expulsion appeals

Date: July 10, 2014

State and federal laws and regulations require that each board of education annually appoint authorized representatives for the federal compensatory programs as well as those that serve as attendance officers and KPERS representatives. The administration recommends that the board approve the following appointments for the 2014-2015 school year:

1. Authorized representative for federal programs — Rick Doll

2. Attendance officers —

Ed West	Lawrence Free State High School
Steve Heffernan	Lawrence Free State High School
Lisa Boyd	Lawrence Free State High School
Mike Hill	Lawrence Free State High School
Keith Jones	Lawrence Free State High School
Matt Brungardt	Lawrence High School
Margene Brohammer	Lawrence High School
Bill DeWitt	Lawrence High School
Michael Norris	Lawrence High School
Jeff Harkin	Liberty Memorial Central Middle School
Jeremy McDonnell	Liberty Memorial Central Middle School
Jennifer Bessolo	South Middle School
Lynn Harrod	South Middle School
Kristen Ryan	Southwest Middle School
Shaun Hanson	Southwest Middle School
Myron Melton	West Middle School
Kathy Branson	West Middle School
Brian McCaffrey	Broken Arrow Elementary School
Scott Cinnamon	Cordley Elementary School
Joni Appleman	Deerfield Elementary School
Tammy Becker	Hillcrest Elementary School
Cris Anderson	Kennedy Elementary School
Jackie Mickel	Langston Hughes Elementary School
Nancy DeGarmo	New York Elementary School
Kirsten Wondra	Pinckney Elementary School
David Williams	Prairie Park Elementary School
Samrie Devlin	Quail Run Elementary School

Jared Comfort	Schwegler Elementary School
Howard Diacon	Sunflower Elementary School
Darcy Kraus	Sunset Hill Elementary School
Jeanne Fridell	Woodlawn Elementary School
Keith Wilson	Lawrence Virtual School

3. Authorized representative for KPERS — Susan Fowler
4. Freedom of Information officer — Julie Boyle
5. Hearing officer for suspension and expulsion appeals — David Cunningham

To: Board of Education

From: Dr. Rick Doll, superintendent

Re: Appointment of KASB Governmental Relations Network Representative

Date: July 10, 2014

Each school board is requested to appoint one member to serve on the Kansas Association of School Boards' (KASB) Governmental Relations Network. The purpose of the GRN is to increase school board contact with local legislators. GRN members receive the KASB Governmental Relations Bulletin, background papers on key issues, and alert notices when fast response is needed on legislative action.

Traditionally, the board president has served in that position; therefore, administration recommends that the board appoint Shannon Kimball as the KASB Governmental Relations Network Representative for the 2014-2015 school year.

To: Board of Education

From: Dr. Rick Doll, superintendent

Re: 1116 Hour School Plan

Date: July 10, 2014

The public school term requirements for the 2014-2015 school year are 186 six-hour days or 1116 hours. Kansas Statute 72-1106 empowers boards of education to approve the method of accounting for instructional time. Each board of education that wishes to authorize, by board action, the 1116 hour method for recording instructional time, is required to notify the state board of education on or before September 15 of the applicable school year.

The administration recommends that the Board of Education authorize the superintendent to notify the Kansas State Board of Education that Lawrence USD #497 will incorporate the hourly method for accounting for instructional time for the 2014-2015 school year.

To: Board of Education

From: Kathy Johnson, director, finance, ext. 2376

Re: Designation of Depositories for 2014-2015 School Year

Date: July 14, 2014

Background:

Each year it is necessary for the Board of Education to designate depositories for Board of Education and School Activity funds, including any investment of idle funds. Below is a list of depositories, for possible use, during 2014-2015.

Bank Name	Charter	Main Bank	Branch Bank	Funds Affected	
				Active	Idle
Bank of America	National	North Carolina	Lawrence	Yes	Yes
Bank of the West	National	Kansas	Lawrence	Yes	Yes
Capitol Federal Savings	National	Kansas	Lawrence	Yes	Yes
Central National	National	Kansas	Lawrence	Yes	Yes
Commerce Bank	National	KC, MO	Lawrence	Yes	Yes
Cornerbank	Kansas	Kansas	Lawrence	Yes	Yes
Douglas County Bank	Kansas	Lawrence	n/a	Yes	Yes
Emprise Bank	National	Kansas	Lawrence	Yes	Yes
First State Bank & Trust	Kansas	Kansas	Lawrence	Yes	Yes
Intrust	National	Kansas	Lawrence	Yes	Yes
Landmark National	Kansas	Kansas	Lawrence	Yes	Yes
Lawrence Bank	Kansas	Kansas	n/a	Yes	Yes
Peoples Bank	Kansas	Kansas	Lawrence	Yes	Yes
Sunflower Bank	Kansas	Kansas	Lawrence	Yes	Yes
UMB	National	Kansas	Lawrence	Yes	Yes
University National Bank	National	Lawrence	n/a	Yes	Yes
US Bank	National	Ohio	Lawrence	Yes	Yes

As a result of a banking bid, US Bank is the district's main depository.

Recommendation:

It is the recommendation of the administration that the schedule of banks and savings associations noted above be designated as depositories for possible use during the 2014-2015 school year.

Motion:

"I move the Board of Education designate the schedule of banks and savings associations as presented by the administration as depositories for possible use during the 2014-2015 school year."

To: Board of Education

From: Kathy Johnson, director, finance, ext. 2376

Re: Waiver of GAAP & Fixed Asset Accounting Requirements

Date: July 10, 2014

Background:

Some years ago, the Kansas State Legislature passed a law requiring all municipalities in Kansas to meet the requirements of Generally Accepted Accounting Principles (GAAP), which included the requirements of fixed assets accounting.

Because municipalities such as school districts are not governed by the same laws as private businesses, school administrators protested these requirements as not necessary, very time-consuming and very expensive. The law was changed because of these protests, which made it possible for a school district to waive these requirements each year if a board of education would choose to do so. Both the GAAP requirement and the fixed assets accounting requirement must be waived each year. The administration suggests the waiver be made one year in advance. The requirements have already been waived for the school year ending June 30, 2014.

The State Department of Education recommends districts waive the GAAP and fixed asset accounting requirements. This allows for cash basis statements that relate better to the state budget documents.

The State Department of Education provides a resolution for the schools of Kansas to use for waiving GAAP requirements. Beginning July 1, 2005, the additional formal letter to the Director of Accounts and Reports requesting waiver is not required, only the board-approved resolution. As required by K.S.A. 75-1120a(c)(1), the Director of Accounts and Reports automatically grants a GAAP waiver for the year the annual resolution stipulates, provided that the resolution contains wording substantially similar to that provided in K.S.A. 75-1120a(c)(1).

Recommendation:

The administration recommends that the Board of Education waive both the requirements for GAAP and the fixed assets accounting for the school year ending June 30, 2015.

Motion:

"I move the Board of Education waive both the requirements for GAAP and the fixed assets accounting for the school year ending June 30, 2015."

RESOLUTION

WHEREAS USD #497 Lawrence Public Schools, Lawrence, Douglas County, Kansas, has determined that the financial statements and financial reports for the year ending June 30, 2015 to be prepared in conformity with the requirements of K.S.A. 75-1120a (a) are not relevant to the requirements of the cash basis and budget laws of this state and are of no significant value to the Board of Education or the members of the general public of the USD#497 Lawrence Public Schools and

WHEREAS there are no revenue bond ordinances or other ordinances or resolutions of the municipality which require financial statements and financial reports to be prepared in conformity with K.S.A. 75-1120a (a) for the year ending June 30, 2015.

NOW, THEREFORE, BE IT RESOLVED, by the Board of Education of USD #497 Lawrence Public Schools, Lawrence, Douglas County, Kansas, in the regular meeting duly assembled this 14th day of July, 2014, waives the requirements of K.S.A. 75-1120a(a) as they apply to USD#497 Lawrence Public Schools, Lawrence, Douglas County, Kansas for the year ended June 30, 2015.

BE IT FURTHER RESOLVED THAT THE Board of Education shall cause the financial statements and financial reports of USD #497 Lawrence Public Schools, Lawrence, Douglas County, Kansas to be prepared on the basis of cash receipts and disbursements as adjusted to show compliance with the cash basis and budget laws of this State.

President of the Board of Education
USD #497 Lawrence Public Schools

Clerk of the Board of Education
USD #497 Lawrence Public Schools

July 14, 2014

To: Board of Education

From: Kathy Johnson, director, finance, ext. 2376

Re: Approval of Master Services Agreement – US Bank

Date: July 10, 2014

Background:

Each year, when the new board president takes office, a new bank signature card is required on the district's bank accounts. Currently, US Bank is the district's financial institution for our main active accounts.

Recommendation:

The administration recommends the Board of Education approve the Master Services Agreement with US Bank for our six main bank accounts:

- Consolidated Account
- Food Service
- Payroll
- Health Care/Work Comp Reserve
- Municipal Investment Account
- Merchant Account

The agreement designates the board president, vice president, board treasurer, clerk of the board and deputy treasurer as authorized personnel to perform financial transactions on behalf of Lawrence USD #497.

Motion:

"I move the Board of Education approve the Master Services Agreement with US Bank, designating the board president, vice president, board treasurer, clerk of the board and deputy treasurer as authorized personnel to perform financial transactions on behalf of Lawrence USD#497."

To: Board of Education

From: Kathy Johnson, director, finance, ext. 2376

Re: 2014-2015 Schedule of Fees

Date: July 10, 2014

Background:

The Board Policy JS Student Fees and Charges indicates the Board of Education will approve a schedule of enrollment fees and other fees to be charged for the school year.

The attached spreadsheet summarizes the proposed enrollment fees for the 2014-2015 school year. Payment plans and credit card payment options are available to parents. The yearbook fee, parking fee and activity tickets are not included in payment plans and are expected to be paid at time of purchase. At the end of each school year, unpaid fees go to collections, unless a parent makes arrangements for a payment plan.

The course fees in Attachment A are reflective of the board decision on January 27, 2014 to eliminate course fees for elective courses other than advanced electives for the 2014-2015 school year.

Recommendation:

Administration recommends approval of the attached schedule of fees for the 2014-2015 school year.

Motion:

"I move the Board of Education approve the attached schedule of fees for the 2014-2015 school year."

SCHEDULE OF ENROLLMENT FEES
2014-2015

DISTRICT ENROLLMENT FEES							
Fee	Grade Level	Amount	Due Date		Waiver	Collected By	Deposited
Student Fees: Instructional Materials, Technology, Textbooks and Workbooks	K-5	\$ 97.00	August		Approved Free and Reduced Lunch Application for Hardship Waiver	School or District	Student Materials Revolving Fund
Student Fees: Instructional Materials, Technology, Textbooks and Workbooks	6-8	\$ 147.00	August		Approved Free and Reduced Lunch Application for Hardship Waiver	School or District	Student Materials Revolving Fund
Student Fees: Instructional Materials, Technology, Textbooks and Workbooks	9-12	\$ 147.00	August		Approved Free and Reduced Lunch Application for Hardship Waiver	School or District	Student Materials Revolving Fund
Activity Trip Transportation	K-5	\$ 15.00	August		Approved Free and Reduced Lunch Application for Hardship Waiver	School or District	General Fund-reimb
Activity Trip Transportation	6-8	\$ 15.00	August		Approved Free and Reduced Lunch Application for Hardship Waiver	School or District	General Fund-reimb
Activity Trip Transportation	9-12	\$ 15.00	August		Approved Free and Reduced Lunch Application for Hardship Waiver	School or District	General Fund-reimb
Student Fees: Instructional Materials, Technology, Textbooks and Workbooks	Virtual K-8	\$ 97.00	August		Approved Free and Reduced Lunch Application for Hardship Waiver	District	Student Materials Revolving Fund
Student Fees: Instructional Materials, Technology, Textbooks and Workbooks	Virtual 9-12	\$ 97.00	August	(a)	Approved Free and Reduced Lunch Application for Hardship Waiver	District	Student Materials Revolving Fund
Course Fee ~ Art Enrichment	K-12 Virtual School	None	August	(b)	Approved Free and Reduced Lunch Application for Hardship Waiver	School or District	Virtual School Fund
Course Fees - High Schools	9-12	Various	August	(1)	Approved Free and Reduced Lunch Application for Hardship Waiver	Schools or District	Student Materials Revolving Fund
Course Fees - Middle Schools	6-8	ZERO	August	(1)	N/A	N/A	N/A
Participation	6-12	\$ 50.00	Season	(2)	Approved Free and Reduced Lunch Application for Hardship Waiver	Schools or District	General Fund-Reimbursement
Co-Curricular	6-12	\$15-\$25	Season	(2)	Approved Free and Reduced Lunch Application for Hardship Waiver	Schools or District	General Fund-Reimbursement
Instrument Rent Fee	6-12	\$ 50.00	August		Approved Free and Reduced Lunch Application for Hardship Waiver	Schools or District	Student materials Revolving Fund Instrument Maintenance
Virtual School	Secondary	\$150 per semester unit		(3)	None	Schools or District	General Fund Reimbursement
Pre-School	ECH	2 days \$75; 3 days \$112.50; 4 days \$150; 5 days \$188		(4)	None	Schools or District	Early Childhood At Risk Fund
SCHOOL SPECIFIC FEES							
Fee		Amount	Due Date		Waiver	Collected By	Deposited
Parking Fee-Required for student to park in parking lot	Secondary Schools	\$ 10.00	August		None	Schools	Activity Fund -Parking
Activity Ticket (gate)-Required for athletes & co-curricular activities	High Schools	\$ 25.00	August		None	Schools	Activity Fund-Gate Receipts
(1) Course Fees: Attachment A		(3) Lawrence Virtual School-Course Acquisition (Enhancement/Enrichment/Add-on)- Students attending beyond 1.0fte					
(2) Participation Fees: Attachment B		(4) Preschool - Peer Models					
(a) Virtual High School Fee (new), consistent with K-8							
(b) Course Fee removed, consistent with removal of other course fees							

Fees**Required District Fees**

Student Fees	\$147.00
Activity Trip Transportation	\$ 15.00
Total Required Fees	\$162.00

Student fees are for, but not limited to, textbook materials, workbooks, and other supplemental supplies detailed on the "High School Fee Payment Form."

Special Fees

Participation Fee (per Sport/Activity)	\$50.00
Co-Curricular Fee (Band/Orch/Select Choirs Debate/Forensics)	\$25.00
Activity Ticket	\$25.00
Parking Permit	\$10.00

Required District Fees, Participation Fees and Co-Curricular Fees may be waived for students who qualify for free and/or reduced meal status and have completed a Form 3E Waiver of Confidentiality, both of which must be on file in the district Food Services Office. Forms for waiver application can be obtained from your school office or online at www.usd497.org/ParentsAndStudents/FoodServices. Waivers do not cover course fees, yearbooks, parking permits, fines and lost USD 497 property. If approved, the waiver will be automatically applied to accounts when all paperwork is completed and received.

Course Fees and Additional Charges

Fees may be required as part of a course or activity and will be specified in the course description book or other enrollment materials. Some costs are estimates and noted as such. Actual costs will be made known at the beginning of the school year. All regular course and activity fees must be approved by the Board of Education (Board Policy JS Student Fees and Charges). Additional charges related to special student projects or activities may be assessed but not without approval by the principal. If there is a problem meeting the additional charges in the course offerings, please contact staff in the school office.

Course Title	Course Fee	Estimated Recommended Calculator Cost	Additional Charges	Organization Membership	Co-Curricular Fee	Activity Ticket
Advanced Algebra II		\$75-100				
Advanced Chemistry		\$10-15				
Advanced Mixed Choir			\$5*		\$25	\$25
Advanced Physics		\$10-15				
Advanced Women's Choir			\$5*		\$25	\$25
Agribusiness				\$12		
Algebra for the College Bound		\$75-100				
Analysis		\$75-100				
AP Calculus AB		\$75-100				
AP Calculus BC		\$75-100				
AP Statistics		\$75-100				
AP Studio Art: Drawing, 2D & 3D	\$25					
Cabinetry I			**			
Cabinetry II, III, IV	\$20		**			
Ceramics/Sculpture I			**			
Ceramics/Sculpture II	\$25		**			
Chemistry		\$10-15				
Civil Engineering and Architecture II	\$25					
Concert Band			\$90*		\$25	\$25

Course Title	Course Fee	Estimated Recommended Calculator Cost	Additional Charges	Organiza- tion Mem- bership	Co- Curricular Fee	Activity Ticket
Concert Choir			\$5*		\$25	\$25
Concert Orchestra			\$90*		\$25	\$25
Construction Science II, III, IV	\$20					
Culinary I	\$15					
Debate (I, II, III, IV)					\$25	\$25
Drawing/Painting II	\$25					
Forensics (I, II, III, IV)					\$25	\$25
Freshman Choir			\$5-20*		\$25	\$25
Freshman Orchestra			\$90*		\$25	\$25
Graphic Design II	\$25					
Interiors and Textiles Design	\$25					
Jewelry/Art Metals I			**			
Jewelry/Art Metals II	\$25		**			
Lifetime Sports	\$25					
Men's Choir			\$5*		\$25	\$25
Photography I			**			
Photography II	\$25		**			
Physics		\$10-15				
Portfolio - all mediums	\$25		**			
Pre-Calculus		\$75-100				
Research and Design for Pre-Const	\$15					
Symphonic Band			\$90*		\$25	\$25
Symphonic Orchestra			\$90*		\$25	\$25
Welding II	\$20					
Women's Choir			\$5*		\$25	\$25
Wind Ensemble			\$90*		\$25	\$25

*Additional charges are estimates and may be one-time costs up to the amount noted. Examples include, but are not limited to, uniform cleaning, robe rental, t-shirts, shoes, etc. For more information, contact the school's music department.

**Additional charges may be incurred for project materials used in a special student project where the student retains ownership upon completion of the course or project.

Note: Recommended AP Biology Lab Manual (\$38) will be provided by USD 497 for use during class. If you wish to purchase your own Lab Manual, you may do so but will not be required to do so.

PAY TO PARTICIPATE AND CO-CURRICULAR FEES

2014-2015

Attachment B

HIGH SCHOOL ACTIVITIES

Activity	KSHAA	Class Credit	Participation Fee	Co-Curr	EX-Curr	Amount
Football	Yes	No	Yes	No	Yes	\$50.00
Boys Basketball	Yes	No	Yes	No	Yes	50.00
Girls Basketball	Yes	No	Yes	No	Yes	50.00
Baseball	Yes	No	Yes	No	Yes	50.00
Boys Golf	Yes	No	Yes	No	Yes	50.00
Girls Golf	Yes	No	Yes	No	Yes	50.00
Boys Swimming	Yes	No	Yes	No	Yes	50.00
Girls Swimming	Yes	No	Yes	No	Yes	50.00
Boys Diving	Yes	No	Yes	No	Yes	50.00
Girls Diving	Yes	No	Yes	No	Yes	50.00
Girls Gymnastics	Yes	No	Yes	No	Yes	50.00
Boys & Girls Track	Yes	No	Yes	No	Yes	50.00
Boys & Girls Cross Country	Yes	No	Yes	No	Yes	50.00
Girls Volleyball	Yes	No	Yes	No	Yes	50.00
Wrestling	Yes	No	Yes	No	Yes	50.00
Cheer leading	Yes	No	Yes	No	Yes	50.00
Pom	Yes	No	Yes	No	Yes	50.00
Boys Soccer	Yes	No	Yes	No	Yes	50.00
Girls Soccer	Yes	No	Yes	No	Yes	50.00
Girls Softball	Yes	No	Yes	No	Yes	50.00
Girls Tennis	Yes	No	Yes	No	Yes	50.00
Boys Tennis	Yes	No	Yes	No	Yes	50.00
Boys Bowling	Yes	No	Yes	No	Yes	50.00
Girls Bowling	Yes	No	Yes	No	Yes	50.00
Weights	No	No	No	No	Yes	Cover cost
Talk to Coaches						of class
Quiz /Scholars' Bowl	Yes	No	Yes	No	Yes	50.00
Pep Band	Yes	No	Yes	No	Yes	50.00
Theater	No	No	Yes	No	Yes	25.00
Band & Marching Band	Yes	Yes	No	Yes	No	25.00
Orchestra	Yes	Yes	No	Yes	No	25.00
Choir/Vocal Music (Select Choirs)	Yes	Yes	No	Yes	No	25.00
Debate	Yes	Yes	No	Yes	No	25.00
Forensics	Yes	Yes	No	Yes	No	25.00

PAY TO PARTICIPATE AND CO-CURRICULAR FEES

2014-2015

Attachment B

MIDDLE SCHOOL ACTIVITIES

Activity	KSHAA	Class Credit	Participation Fee	Co-Curr	E-Curr	Amount
Football	Yes	No	Yes	No	Yes	\$50.00
Boys Basketball	Yes	No	Yes	No	Yes	50.00
Girls Basketball	Yes	No	Yes	No	Yes	50.00
Boys & Girls Track	Yes	No	Yes	No	Yes	50.00
Girls Volleyball	Yes	No	Yes	No	Yes	50.00
Wrestling	Yes	No	Yes	No	Yes	50.00
Cheerleading	Yes	No	Yes	No	Yes	50.00
Girls Tennis	Yes	No	Yes	No	Yes	50.00
Boys Tennis	Yes	No	Yes	No	Yes	50.00
Theater	No	No	Yes	No	Yes	15.00
Band	Yes	Yes	No	Yes	No	15.00
Orchestra	Yes	Yes	No	Yes	No	15.00
Choir/Vocal Music	Yes	Yes	No	Yes	No	15.00
(select choirs)						

To: Board of Education

From: Paula Murrish, director, food services & purchasing, ext. 2706

Re: 2014-2015 Meal Prices

Date: July 10, 2014

Background:

Board Policy JS Student Fees and Charges indicates that the Board of Education will approve a schedule of enrollment fees and other fees to be charged for the school year. At the end of each school year, it is necessary to evaluate the prices charged for meals to students and adults for the following school year.

Rationale for Recommendation:

1. The food service department is self-supporting. In today's environment of rising costs this is a challenge. Current state and federal reimbursements have fallen behind the costs of production and are inadequate to maintain the high nutrition and Healthy Hunger Free Kids Act standards established in law.
2. The food service department has seen an increase in food and labor costs.
3. The following is a five-year history of meal prices and recommendation for the 2014-2015 year. The maximum price a district can charge for meals in the reduced price category is determined by federal legislation. The adult meal price is also a suggested price by the Kansas State Department of Education.

<u>Lunch</u>	<u>2009-2010</u>	<u>2010-2011</u>	<u>2011-2012</u>	<u>2012-2013</u>	<u>2013-2014</u>	<u>2014-2015</u>
Elementary	\$2.15	\$2.20	\$2.25	\$2.30	\$2.35	\$2.40
Middle School	\$2.40	\$2.45	\$2.50	\$2.55	\$2.60	\$2.60
High School	\$2.40	\$2.45	\$2.50	\$2.55	\$2.60	\$2.65
Reduced Price	\$0.40	\$0.40	\$0.40	\$0.40	\$0.40	\$0.40
Adult	\$3.00	\$3.25	\$3.30	\$3.35	\$3.40	\$3.45

Breakfast

Elementary	\$1.30	\$1.35	\$1.35	\$1.35	\$1.40	\$1.50
Middle School	\$1.45	\$1.50	\$1.50	\$1.50	\$1.55	\$1.60
High School	\$1.45	\$1.50	\$1.50	\$1.50	\$1.55	\$1.65
Reduced Price	\$0.30	\$0.30	\$0.30	\$0.30	\$0.30	\$0.30
Adult	\$1.75	\$2.00	\$2.00	\$2.00	\$2.05	\$2.15

Recommendation:

The administration recommends that meal prices as outlined in this enclosure be established for the 2014-2015 school year.

Motion

"I move that the Board of Education approve the recommended meal prices as outlined in this enclosure for the 2014-2015 school year."

To: Board of Education

From: Paula Murrish, director, food services & purchasing, ext. 2706

Re: Participation in Child Nutrition Programs for 2014-2015 School Year

Date: July 10, 2014

Background:

USD #497 has participated in the National School Lunch Program (NSLP), School Breakfast Program (SBP), After School Care Snack Program (ASCSP), Cash-in-lieu of Commodities (CLC), Summer Food Service Program (SFSP), and Seamless Summer (SS) for many years.

Rationale:

1. To participate in the Child Nutrition Programs, the Sponsoring Food Authority must agree to conduct the program in accordance with regulations as outlined in the 2015 Program Agreement.
2. If the Board of Education chooses to participate in these programs, the Nutrition Services Section of the Kansas State Board of Education will be the agent for the Federal Government to insure the implementation of the Program Agreement and to provide reimbursement funds for meals served.
3. USD #497 will receive approximately \$2,200,000 from Federal and State funds for meals served during the 2014-2015 school year. This is approximately 45% of the total receipts of the Food Service Fund.
4. The Program Agreement requires that a determining official review free/reduced meal applications and determine eligibility for program benefits and a hearing official who is not involved with the original eligibility determination to be designated. Lindsey Morgan, Supervisor/RD, will serve as the determining official and Paula Murrish is recommended to be the hearing official.
5. The Kansas State Board of Education requires that an Authorized Representative be designated by the Board of Education in an official board meeting. The Authorized Representative may act for the Sponsoring Food Authority in handling the operation of the School Food Service Programs in preparing and signing documents, reports and claims for reimbursement pertaining to the installation and operations of the programs. It is recommended that Paula Murrish serve as this Authorized Representative.

Recommendation:

The administration recommends that the Board of Education agree to participate in the National School Lunch Program (NSLP), School Breakfast Program (SBP), After School Care Snack Program (ASCSP), Cash-in-lieu of Commodities (CLC), Summer Food Service Program (SFSP), and Seamless Summer (SS) for the 2014-2015 school year and to designate Paula Murrish as its Authorized Representative. It is recommended that Lindsey Morgan be designated as the Determining Official for free/reduced meal applications with Paula Murrish as the Hearing Official.

Motion:

"I move the Board of Education approve participation in the Child Nutrition Programs for the 2014-2015 school year and designate Paula Murrish as the Authorized Representative and Hearing Official with Lindsey Morgan as the Determining Official for free/reduced price meal applications."

To: Board of Education

From: David Cunningham, director, human resources & legal services, ext. 4937

Re: Adoption of GAP & 2014-2015 Student Handbooks

Date: July 10, 2014

Background:

Each year, the Board of Education adopts as policy the Guide to Administrative Procedures (GAP) and Student Handbooks. The GAP is used to assist building and central office administrators to enforce board policy. Student Handbooks are updated annually and used to communicate rules and regulations to students and parents.

Recommendation:

Staff recommends the board approve the GAP and 2014-2015 Student Handbooks.

Motion:

"I move the Board of Education approve the Guide to Administrative Procedures (GAP) and Student Handbooks for 2014-2015."

**MINUTES OF THE MEETING OF THE BOARD OF EDUCATION
OF DISTRICT 497, HELD IN THE LAWRENCE PUBLIC SCHOOLS
INTERACTIVE TECHNOLOGY CENTER,
EDUCATIONAL SUPPORT AND DISTRIBUTION CENTER,
110 McDONALD DRIVE, IN THE CITY OF LAWRENCE**

June 30, 2014

CALL TO ORDER

At 7 p.m., Board President Rick Ingram called to order the regular meeting of the Board of Education.

APPROVAL OF AGENDA

Upon a motion by Shannon Kimball, seconded by Kris Adair, the board voted, in a unanimous voice vote, to approve the agenda as published.

ROLL CALL

Board Members Present

Rick Ingram, president
Shannon Kimball, vice president
Kris Adair
Adina Morse
Vanessa Sanburn

Board Member Absent

Randy Masten

SAT Members Present

Rick Doll, superintendent of schools
Kyle Hayden, assistant superintendent,
business & operations
Julie Boyle, director, communications
Janice Dunn, clerk

Others Present (Including Administration and Staff)

Deborah Altus	Robert Byers	Luke Deets	Keith Diaz Moore
Lindsey Frye	Lori Greenfield	Kathy Johnson	Terri Johnson
Eli Jost	Jerry Jost	Kirsten Krug	Mick Lowe
Stephen Montemayor	Paula Murrish	Dean Youngers	

SPECIAL RECOGNITION

Lawrence Public Schools' 2014 Outstanding Citizen Award – Jerry Jost

Dr. Rick Doll, superintendent, stated that the Lawrence Public Schools' Outstanding Citizen Award is given annually to recognize an individual or group of individuals for outstanding leadership and service to public education.

He introduced Jerry Jost as the 2014 award winner and acknowledged his excellent leadership and work with Educate Lawrence. Educate Lawrence is an advocacy group of parents who make an effort to stay well-informed and communicate school finance and other legislative issues affecting our schools. Dr. Doll also acknowledged Jerry's involvement in helping to spread the word about last year's school bond election.

Mr. Jost was presented with a plaque in honor of his selection as the Lawrence Public Schools' 2014 Outstanding Citizen.

Special Recognition (Continued)

Outgoing Board Member – Keith Diaz Moore

Dr. Rick Doll, superintendent, recognized Keith Diaz Moore for his three years of service to the Board of Education. He noted that, during this time, Keith served on the Equity Council, Lawrence Schools Foundation board, Bond Committee, Employee Advisory Committee, Facility Planning and Progress Committee, Educate Lawrence, Fringe Benefit Committee and Negotiations Team. In addition, he served as building liaison to a number of schools. Dr. Doll recalled that Keith participated in board meetings through Skype in the early morning hours while in Sweden during the first semester.

Dr. Doll stated that Mr. Diaz Moore was a really good listener and appropriately gave good advice without pushing. His work on the Facility Planning and Progress Committee and Negotiations Team was highlighted.

Keith Diaz Moore resigned from the board on May 27, 2014 after accepting a position as the dean of the University of Utah's College of Architecture and Planning. He was presented with a gift in honor of his service to the USD 497 Board of Education.

2013-2014 Board of Education President – Rick Ingram

Dr. Rick Doll, superintendent, recognized Rick Ingram for his service during the past year as president of the Board of Education. Dr. Doll acknowledged that Mr. Ingram's level of responsibility increased with his added contact with the superintendent, bi-monthly agenda planning meetings, and participation in public functions. His self-appointment to the Boundary Committee this year was highlighted.

As is tradition, Board President Ingram was presented with an original piece of artwork by a high school student. The still life pastel, titled, "Lemon Glass," was created by Olivia Gutierrez, who will be a sophomore at Lawrence High School next year. She is a student of Wendy Vertacnik.

RECOGNITION OF AUDIENCE

President Ingram asked for public comment on any item not included on the agenda. There was none.

APPROVAL OF CONSENT AGENDA

Following a motion by Kris Adair, seconded by Shannon Kimball, the board voted, in a 5-0 roll call vote, to adopt the items listed on the consent agenda.

The consent agenda included the following:

- The minutes of the June 9, 2014 executive session, pre-meeting work session, regular meeting
- The financial reports including school activity funds, budget to actual, cash summary
- The June 30, 2014 personnel report

Approval of Consent Agenda (Continued)

- The monthly vouchers in the following account totals:

<u>Fund</u>	<u>Amount</u>
General Fund	\$ 812,042.31
Local Option Budget	18,956.68
Food Service	45,658.19
Vocational Education	2,331.82
Special Education	18,065.61
Drivers Training	738.10
Capital Outlay	101,693.47
Health Fund	824,081.50
Cost of Living	1,290,500.00
Summer School	434.52
Adult Basic Education	50.00
Textbook Rental	11,984.27
Virtual School	8,151.34
Professional Development	17,372.70
Bilingual Fund	783.25
Parents As Teachers	282.33
Student Materials Revolve	68,894.38
At Risk (K-12)	49.00
2005 Bond Fund	7,500.00
Work Comp Reserve	55,528.43
2013 Bonds	1,851,172.57
Payroll Fund	516,741.85
Title I 2013	393.12
Title I 2014	1,025.00
Title I C/O 2014	778.96
Title In Ed 2014	555.00
Johnson O'Malley In Ed 2013	540.35
Johnson O'Malley In Ed 2014	500.00
Title IIA 2014	3,540.50
Carl Perkins 2014	1,733.05
Title IID 2010	377.47
Spectra-Medicaid	18,043.40
Title VIB 2014	4,390.00
KS Md Schl ASP 2014	2,611.20
Loc/Don/Gra	9,923.06
TOTAL	<u><u>\$5,697,423.43</u></u>

- Approvals of the following:
 - Agreement with Northwest Evaluation Association
 - Instrumental Repair Contract for Band & Orchestra
 - Purchase of Secondary Band Instruments for 2014-2015 School Year
 - Vehicle Replacements – District
 - Purchase of Furniture & Equipment – Langston Hughes & Districtwide Blended Classrooms
 - Purchase of Middle School Math Resources – Grades 7 & 8
 - Renewal of OdysseyWare Licenses for 2014-2015 School Year
 - Addendum to Track Project – Liberty Memorial Central
 - Purchase of Kitchen Steam Equipment & Cashier Stands – West
 - Server Equipment & Renewal of License Subscriptions
 - Disposal of Obsolete Cheerleading Uniforms – Free State

REPORT OF BOARD PRESIDENT RICK INGRAM

- Board President Rick Ingram stated that it has been a pleasure to serve this year as the board president. He said that some of the responsibilities he thought would not be fun, actually were.
- Mr. Ingram reported that the Boundary Committee has a recommendation that will be brought before the board in August or September. He said that public forums and action on the recommendation will follow. He acknowledged fellow board member, Adina Morse, and all of the community members who also serve on the committee.

REPORT OF SUPERINTENDENT RICK DOLL

- Superintendent Rick Doll welcomed Stephen Montemayor, the newly assigned K-12 education reporter for the Lawrence Journal-World.
- Superintendent Doll stated that Lawrence Education Association (LEA) leadership reported that the teacher's union has ratified the Master Agreement. He thanked the board's negotiations team including board members Randy Masten and Keith Diaz Moore; administrative staff members Kyle Hayden and David Cunningham, and principals Matt Brungardt and David Williams; **and** the teachers for all of their hard work.
- Dr. Doll reminded board members that a group photo will be taken at 6:30 p.m., prior to the July 14 meeting.
- He reported that there will be a goal-setting work session at 5:30 p.m., prior to the July 28 meeting. In addition, he reported that the budget hearing will be held on August 11.

BOARD COMMENTARY

There was no board commentary.

REPORTS

There were no reports.

OLD BUSINESS

Approval of Bond Construction Bids –Cordley Elementary School

Kyle Hayden, assistant superintendent, business and operations, recalled that the Board of Education, at its December 9, 2013 meeting, approved the owner-construction management at-risk services agreement for USD 497 2013 Bond Issue Projects with McCownGordon Construction which contained bond construction package 1.

Dean Youngers, construction manager, bond projects, reported that bids for the Cordley project were received at the offices of McCownGordon Construction on Tuesday, June 3, 2014. He reported that the Guaranteed Maximum Price (GMP) includes a construction contingency of 3% should any unforeseen conditions arise during the construction process.

Upon a motion by Adina Morse, seconded Vanessa Sanburn, the board voted, in a 5-0 roll call vote, to approve the Guaranteed Maximum Price contract amendment with McCownGordon Construction in the amount of \$7,580,425 for bond construction at Cordley Elementary School.

NEW BUSINESS

Appointment of Board Member for Unexpired Term

Board President Rick Ingram reported that 13 patrons submitted applications to fill the unexpired board term left vacant by Keith Diaz Moore who resigned after accepting a position at the University of Utah. He stated that the applications represent a great group of people who were willing to donate their time for public service on behalf of kids.

Mr. Ingram noted that board members received and reviewed all of the applications. He asked that each one share the criteria used for their selections and then give the names of the two individuals who met that criteria.

The selections of persons to fill the unexpired board term included the following:

Board Member	First Choice	Second Choice
Kris Adair	Scott Criqui	Lindsey Frye
Vanessa Sanburn	Marcel Harmon	Scott Criqui
Adina Morse	Bob Byers	Scott Criqui
Shannon Kimball	Bob Byers	Neal Lintecum
Rick Ingram	Bob Byers	Marcel Harmon
Randy Masten	Bob Byers	Marcel Harmon

Superintendent Rick Doll reported that Board Member Randy Masten, who was on vacation and unable to attend the meeting, had submitted his choices through email. He noted that Mr. Masten's choices would be considered, but he would have no vote.

Board President Ingram recounted that Bob Byers was the first choice for four board members, followed by Scott Criqui and Marcel Harmon.

Board Vice President Shannon Kimball stated that it was difficult to make a decision with so many great choices. She thanked all who applied and encouraged them to continue to be involved in the school district and the community.

Upon a motion by Shannon Kimball, seconded by Vanessa Sanburn, the board voted, in a 5-0 roll call vote, to select Bob Byers to fill the remainder of the unexpired term held by Keith Diaz Moore through June 30, 2015.

ADJOURNMENT

At 7:50 p.m., a motion was made by Shannon Kimball, seconded by Vanessa Sanburn, to adjourn the regular meeting of the Board of Education. The motion passed by a unanimous voice vote.

Janice E. Dunn
Clerk, Board of Education

PERSONNEL RECOMMENDATIONS

CERTIFIED PERSONNEL

NEW ASSIGNMENT

<u>Personnel</u>	<u>Effective</u>	<u>Location</u>	<u>FTE</u>	<u>Position</u>
CONRAD, ZACHARY TYLER	08/05/2014	LMCMS	1.0000	TEACHER MIDDLE SCHOOL
* COOPER-CORNEJO, ROBIN	08/05/2014	DISTRICT WIDE	1.0000	SOCIAL WORKER
* DECOOK, CARRIE ANN	08/05/2014	DISTRICT WIDE	1.0000	TEACHER SPECIAL EDUCATION
ENGEL, LAURA CHRISTINE	08/05/2014	PRAIRIE PARK	0.5000	TEACHER ELEMENTARY
HAAS, JEFFREY JOHN	08/05/2014	LFSHS	1.0000	TEACHER SECONDARY
JOHNSON, IRA F	08/05/2014	HILLCREST	1.0000	TEACHER ESL
KING, CHELSEA ELAINE	08/05/2014	SMS	1.0000	TEACHER MIDDLE SCHOOL
* LOVEJOY, TAMMY S	08/05/2014	DISTRICT WIDE	1.0000	PSYCHOLOGIST
LUGO, KAITLIN DEANNA	08/05/2014	QUAIL RUN	1.0000	TEACHER ELEMENTARY
* MEYER, ALISA MARIE	08/11/2014	BROKEN ARROW	1.0000	TEACHER SPECIAL EDUCATION
* RASTOK, JENNIFER L	08/05/2014	KENNEDY	1.0000	TEACHER SPECIAL EDUCATION
ROSEN, PAUL A	08/12/2013	LFSHS	1.0000	TEACHER SECONDARY
SEARS, MELISSA C.	08/05/2014	BROKEN ARROW	1.0000	TEACHER ELEMENTARY
SMITH, CHRISTINA MARIE	08/05/2014	QUAIL RUN	1.0000	TEACHER ELEMENTARY
WHITE, MARGARET T	08/05/2014	LMCMS	1.0000	TEACHER MIDDLE SCHOOL

CHANGE FTE/HRs

<u>Personnel</u>	<u>Effective</u>	<u>Location</u>	<u>FTE</u>	<u>Position</u>
SPAULDING, JULIE L	08/11/2014	VIRTUAL	0.2000	TEACHER ELEMENTARY

RESIGNED

<u>Personnel</u>	<u>Effective</u>	<u>Location</u>	<u>FTE</u>	<u>Position</u>
MOCK, ALICIA C	05/23/2014	VIRTUAL	0.8000	TEACHER MIDDLE SCHOOL

CLASSIFIED PERSONNEL (12 MONTHS)

NEW ASSIGNMENT

<u>Personnel</u>	<u>Effective</u>	<u>Location</u>	<u>FTE</u>	<u>Position</u>
AVERILL, WILLIAM SASSAR	07/01/2014	VIRTUAL	1.0000	ADMIN ASSISTANT SCHOOL

CLASSIFIED PERSONNEL (LESS THAN 12 MONTHS)

CHANGE FTE/HRs

<u>Personnel</u>	<u>Effective</u>	<u>Location</u>	<u>FTE</u>	<u>Position</u>
CURLEY BECENTI, SHERANA	08/11/2014	NEW YORK	0.9375	PARA TITLE I
* HOFFHINES, NORENE B	08/11/2014	NEW YORK	0.9375	PARA INTERRELATED RESOURCE RM
* THIBODEAU, MARY E	08/11/2014	NEW YORK	0.9375	PARA INTERRELATED RESOURCE RM

CHANGE POSITION

<u>Personnel</u>	<u>Effective</u>	<u>Location</u>	<u>FTE</u>	<u>Position</u>
* BITTERS, DAINA M	08/11/2014	QUAIL RUN	0.5000	PARA INTERRELATED RESOURCE RM
GLEASON, MICHELLE	08/13/2014	BROKEN ARROW	0.3750	LIBRARY MEDIA ASSISTANT
* GLEASON, MICHELLE	08/11/2014	BROKEN ARROW	0.1875	PARA INTERRELATED RESOURCE RM
GLEASON, MICHELLE	08/11/2014	BROKEN ARROW	0.1875	SECRETARY SCHOOL
GLEASON, MICHELLE	08/13/2014	BROKEN ARROW	0.1875	NON INSTRUCTIONAL MONITOR

PERSONNEL RECOMMENDATIONS

* PERRY, MEGAN M	08/11/2014	WMS	0.9375	PARA EMOTIONALLY DISTURBED
* WAMSLEY, EMILY J	08/11/2014	PRAIRIE PARK	1.0000	PARA SPED AUTISM

RESIGNED

<u>Personnel</u>	<u>Effective</u>	<u>Location</u>	<u>FTE</u>	<u>Position</u>
DILLON, MARGARET L	05/23/2014	LFSHS	0.8125	FOOD SERVICE ASSISTANT II
* JONES, ANDRE D	05/23/2014	LHS	0.9375	PARA SPED AUTISM
MAHAN, JEFF M	05/23/2014	NEW YORK	0.5625	PARA TITLE I
* MELCHER, KRISTEN	05/23/2014	PRAIRIE PARK	1.0000	PARA SPED AUTISM
* OLDEN, RICHARD TYLER	05/23/2014	SWMS	0.9375	PARA EMOTIONALLY DISTURBED
PERRY, MEGAN M	05/23/2014	DEERFIELD	0.0625	NON INSTRUCTIONAL MONITOR
* PERRY, MEGAN M	05/23/2014	DEERFIELD	0.9375	PARA INTERRELATED RESOURCE RM
PODREBARAC, DENA KAY	05/23/2014	QUAIL RUN	0.5000	LIBRARY MEDIA ASSISTANT

NON-CONTRACTED PERSONNEL**RESIGNED**

<u>Personnel</u>	<u>Effective</u>	<u>Location</u>	<u>FTE</u>	<u>Position</u>
DILLON, MARGARET L	06/30/2014	DISTRICT WIDE	1.0000	NC FOOD SERVICE CONCESSIONS

* = Special Education Budget

LAWRENCE PUBLIC SCHOOLS
FUND ID SUMMARY AND CHECK REGISTER
Checks Dated: 06/26/2014 - 07/14/2014

Fund	Fund Description	Amount
001	GENERAL	388,342.51
002	LOCAL OPTION BUDGET	16,422.93
003	FOOD SERVICE	45,931.62
004	VOCATIONAL EDUCATION	1,693.64
005	SPECIAL EDUCATION	255,571.97
006	DRIVERS TRAINING	4,707.73
009	CAPITAL OUTLAY	158,339.04
011	SPECIAL ASSESSMENTS	607.95
013	SUMMER SCHOOL	1,560.00
016	TEXTBOOK RENTAL	75.00
018	VIRTUAL SCHOOL	33,078.01
020	PROFESSIONAL DEVELP	19,761.50
021	BILINGUAL FUND	529.25
022	PARENTS AS TEACHERS	57.80
024	STUDENTS MATLS REVOLVE	3,503.84
030	WORK COMP RESERVE	55,225.00
035	2013 BONDS	1,604,010.42
095	PAYROLL FUND	4,507,430.30
200 14	TITLE I 2014	1,618.12
203 14	TITLE IN ED 2014	300.00
204 14	JOHNSON O'MALLEY INED 2014	50.00
206 14	TITLE IIA 2014	138.88
208 14	CARL PERKINS 2014	785.00
275	SPECTRA-MEDICAID	4,718.00
280 14	TITLE VIB 2014	450.00
800	LOC/DON/GRA	4,715.97
GRAND TOTAL		7,109,624.48

LAWRENCE PUBLIC SCHOOLS
FUND ID SUMMARY AND CHECK REGISTER
Checks Dated: 06/26/2014 - 07/14/2014

Check #	Vendor #	Vendor Name	Check Date	Amount
0000000182	V0005062	KANSAS NATIONAL EDUCATION ASSO	06/27/2014	24,186.66
0000000183	V0005040	LAWRENCE EDUCATION ASSOCIATION	06/27/2014	1,749.02
0000000184	V0005062	KANSAS NATIONAL EDUCATION ASSO	06/26/2014	7,367.02
0000000185	V0005040	LAWRENCE EDUCATION ASSOCIATION	06/26/2014	533.26
0000000186	V0005062	KANSAS NATIONAL EDUCATION ASSO	06/28/2014	16,653.26
0000000187	V0005040	LAWRENCE EDUCATION ASSOCIATION	06/28/2014	1,201.20
0000000188	V0005062	KANSAS NATIONAL EDUCATION ASSO	06/27/2014	7,367.02
0000000189	V0005040	LAWRENCE EDUCATION ASSOCIATION	06/27/2014	533.26
0000000190	V0005062	KANSAS NATIONAL EDUCATION ASSO	06/29/2014	16,603.62
0000000191	V0005040	LAWRENCE EDUCATION ASSOCIATION	06/29/2014	1,197.56
0000001738	V0002741	PUR-O-ZONE INC	06/26/2014	5,231.13
0000001739	V0009238	WEST, LESA A	06/26/2014	57.80
0000001740	V0009953	YOUNGERS, DEAN	06/26/2014	172.00
0000001741	V0011274	FIVE08 MEDIA LLC	07/03/2014	2,350.00
0000001756	V0006214	APPLE INC	07/14/2014	790.00
0000001757	V0004520	CDW GOVERNMENT INC	07/14/2014	6,215.37
0000001758	V0009526	DOWNER, VICKI S	07/14/2014	7.84
0000001759	V0004712	EBSCO INDUSTRIES INC	07/14/2014	3,018.55
0000001760	V0007323	IDENTISOURCE LLC	07/14/2014	5,581.32
0000001761	V0002817	OFFICE DEPOT INC	07/14/2014	3,618.46
0000001762	V0005756	PACIFIC EDUCATIONAL GROUP INC	07/14/2014	17,550.00
0000001763	V0002741	PUR-O-ZONE INC	07/14/2014	10,018.61
0000001764	V0004435	ROONEY, MARY J	07/14/2014	53.76
0000001765	V0007764	SUCCESS BY 6 COALITION OF DOUG	07/14/2014	14,938.00
0000001766	V0004608	WARREN, PAULA S	07/14/2014	75.00
0000001767	V0009953	YOUNGERS, DEAN	07/14/2014	8,916.67
0000004056	V0010250	GREAT LAKES HIGHER EDUCATION G	06/27/2014	342.63
0000004057	V0004278	GRIFFIN, WILLIAM H	06/27/2014	2,160.00
0000004058	V0004306	HAMILTON (TRUSTEE), JAN	06/27/2014	2,465.00
0000004059	V0004951	HEALTH CARE SERVICES/RESERVE F	06/27/2014	502,249.72
0000004060	V0005992	KANSAS DEPARTMENT OF REVENUE	06/27/2014	1,128.14
0000004061	V0006542	KANSAS PAYMENT CENTER	06/27/2014	1,995.00
0000004062	V0007016	NEWMAN REYNOLDS & HESSE PA	06/27/2014	376.05
0000004063	V0006543	OHIO CHILD SUPPORT PAYMENT CEN	06/27/2014	204.00
0000004064	V0010417	PERFORMANT RECOVERY INC	06/27/2014	376.05
0000004065	V0004348	PIONEER CREDIT RECOVERY INC	06/27/2014	323.30
0000004066	V0006545	STATE OF FLORIDA DISBURSEMENT	06/27/2014	602.40
0000004067	V0004846	US DEPARTMENT OF EDUCATION	06/27/2014	1,200.07
0000004068	V0009415	WINDHAM PROFESSIONALS INC	06/27/2014	474.97
0000004069	V0004862	WORKERS COMP RESERVE FUND	06/27/2014	24,646.25
0000004077	V0004862	WORKERS COMP RESERVE FUND	06/26/2014	1.29
0000004078	V0009777	DOWNING, LESLIE	06/26/2014	520.81
0000004079	V0010250	GREAT LAKES HIGHER EDUCATION G	06/26/2014	357.88

LAWRENCE PUBLIC SCHOOLS
FUND ID SUMMARY AND CHECK REGISTER
Checks Dated: 06/26/2014 - 07/14/2014

Check #	Vendor #	Vendor Name	Check Date	Amount
0000004080	V0004278	GRIFFIN, WILLIAM H	06/26/2014	350.00
0000004081	V0004306	HAMILTON (TRUSTEE), JAN	06/26/2014	1,000.00
0000004082	V0004951	HEALTH CARE SERVICES/RESERVE F	06/26/2014	130,008.29
0000004083	V0006542	KANSAS PAYMENT CENTER	06/26/2014	1,671.00
0000004084	V0004846	US DEPARTMENT OF EDUCATION	06/26/2014	436.53
0000004085	V0004862	WORKERS COMP RESERVE FUND	06/26/2014	6,122.14
0000004086	V0004278	GRIFFIN, WILLIAM H	06/28/2014	1,810.00
0000004087	V0004306	HAMILTON (TRUSTEE), JAN	06/28/2014	1,465.00
0000004088	V0004951	HEALTH CARE SERVICES/RESERVE F	06/28/2014	328,720.08
0000004089	V0005992	KANSAS DEPARTMENT OF REVENUE	06/28/2014	1,278.56
0000004090	V0006542	KANSAS PAYMENT CENTER	06/28/2014	768.00
0000004091	V0006543	OHIO CHILD SUPPORT PAYMENT CEN	06/28/2014	204.00
0000004092	V0010417	PERFORMANT RECOVERY INC	06/28/2014	451.26
0000004093	V0004348	PIONEER CREDIT RECOVERY INC	06/28/2014	323.30
0000004094	V0006545	STATE OF FLORIDA DISBURSEMENT	06/28/2014	602.40
0000004095	V0004846	US DEPARTMENT OF EDUCATION	06/28/2014	763.54
0000004096	V0009415	WINDHAM PROFESSIONALS INC	06/28/2014	474.97
0000004097	V0004862	WORKERS COMP RESERVE FUND	06/28/2014	15,161.42
0000004098	V0009777	DOWNING, LESLIE	06/27/2014	520.81
0000004099	V0010250	GREAT LAKES HIGHER EDUCATION G	06/27/2014	357.88
0000004100	V0004278	GRIFFIN, WILLIAM H	06/27/2014	350.00
0000004101	V0004306	HAMILTON (TRUSTEE), JAN	06/27/2014	1,000.00
0000004102	V0004951	HEALTH CARE SERVICES/RESERVE F	06/27/2014	130,383.55
0000004103	V0006542	KANSAS PAYMENT CENTER	06/27/2014	1,671.00
0000004104	V0004846	US DEPARTMENT OF EDUCATION	06/27/2014	436.53
0000004105	V0004862	WORKERS COMP RESERVE FUND	06/27/2014	6,151.15
0000004106	V0004278	GRIFFIN, WILLIAM H	06/29/2014	1,810.00
0000004107	V0004306	HAMILTON (TRUSTEE), JAN	06/29/2014	1,465.00
0000004108	V0004951	HEALTH CARE SERVICES/RESERVE F	06/29/2014	327,847.84
0000004109	V0005992	KANSAS DEPARTMENT OF REVENUE	06/29/2014	1,278.56
0000004110	V0006542	KANSAS PAYMENT CENTER	06/29/2014	768.00
0000004111	V0006543	OHIO CHILD SUPPORT PAYMENT CEN	06/29/2014	204.00
0000004112	V0010417	PERFORMANT RECOVERY INC	06/29/2014	451.26
0000004113	V0004348	PIONEER CREDIT RECOVERY INC	06/29/2014	323.30
0000004114	V0006545	STATE OF FLORIDA DISBURSEMENT	06/29/2014	602.40
0000004115	V0004846	US DEPARTMENT OF EDUCATION	06/29/2014	763.54
0000004116	V0009415	WINDHAM PROFESSIONALS INC	06/29/2014	474.97
0000004117	V0004862	WORKERS COMP RESERVE FUND	06/29/2014	15,118.25
0000004118	V0004862	WORKERS COMP RESERVE FUND	06/30/2014	1,071.37
0000046891	V0011755	EBRPH LLC	06/26/2014	607.95
0000046892	V0002766	GENERAL FUND	06/26/2014	3,850.00
0000046893	V0002760	GOULD EVANS ASSOCIATES	06/26/2014	6,950.00
0000046894	V0004138	GRAYBAR	06/26/2014	1,989.75

LAWRENCE PUBLIC SCHOOLS
FUND ID SUMMARY AND CHECK REGISTER
Checks Dated: 06/26/2014 - 07/14/2014

Check #	Vendor #	Vendor Name	Check Date	Amount
0000046895	V0011012	HILAND DAIRY FOODS COMPANY LLC	06/26/2014	250.74
0000046896	V0011012	HILAND DAIRY FOODS COMPANY LLC	06/26/2014	1,567.31
0000046897	V0011369	HOLLIS & MILLER ARCHITECTS & E	06/26/2014	3,894.79
0000046898	V0004148	HOME DEPOT CREDIT SERVICES	06/26/2014	155.34
0000046899	V0004421	HONEY CREEK DISPOSAL SERVICE I	06/26/2014	171.00
0000046900	V0007592	HUNTER, MICHELE	06/26/2014	13.78
0000046901	V0002865	JAYHAWK TROPHY COMPANY INC	06/26/2014	114.30
0000046902	V0002783	LAKESHORE LEARNING MATERIALS	06/26/2014	30.98
0000046903	V0003969	LAWRENCE FREE STATE HIGH SCHOO	06/26/2014	665.00
0000046904	V0003969	LAWRENCE FREE STATE HIGH SCHOO	06/26/2014	120.00
0000046905	V0006122	LAWRENCE PUBLIC LIBRARY	06/26/2014	22.00
0000046906	V0004795	MCCRAY LUMBER COMPANY INC	06/26/2014	313.10
0000046907	V0007452	MELLEN, BEN	06/26/2014	47.00
0000046908	V0004527	NATIONAL BUSINESS FURNITURE	06/26/2014	4,284.28
0000046909	V0002738	PET WORLD INC	06/26/2014	226.06
0000046910	V0003577	PROFESSIONAL ENGINEERING CONSU	06/26/2014	3,633.00
0000046911	V0003541	QUILL CORPORATION	06/26/2014	615.54
0000046912	V0010825	RICOH USA INC	06/26/2014	17,235.00
0000046913	V0005687	ROTH, PHILLIP	06/26/2014	47.00
0000046914	V0003958	SCHOLASTIC INC	06/26/2014	60.46
0000046915	V0003961	SCHOOL OUTFITTERS	06/26/2014	1,099.64
0000046916	V0003962	SCHOOL SPECIALTY INC	06/26/2014	1,429.47
0000046917	V0002718	SENSENEY MUSIC INC	06/26/2014	35.09
0000046918	V0011468	SPECTRUM PAINT NORTH LLC DBA S	06/26/2014	534.43
0000046919	V0005808	STUDENT ASSURANCE SERVICES INC	06/26/2014	8,000.00
0000046920	V0004047	TARGET STORES	06/26/2014	48.47
0000046921	V0004507	TFMCOMM INC	06/26/2014	1,155.13
0000046922	V0003704	THE TEAM SPORTING GOODS INC	06/26/2014	2,094.95
0000046923	V0006006	THOMAS MCGEE LC	06/26/2014	55,225.00
0000046924	V0010044	TINY-K EARLY INTERVENTION INC	06/26/2014	58,499.15
0000046925	V0004325	USD 497 LAWRENCE PUBLIC SCHOOL	06/26/2014	3,107.94
0000046926	V0011688	UTILITY TRAILER OF KANSAS CITY	06/26/2014	2,324.16
0000046927	V0004166	WALMART	06/26/2014	44.58
0000046928	V0011499	WHITENIGHT, DAVID	06/26/2014	61.99
0000046929	VOID.CONTINU	VOID - CONTINUED STUB	07/03/2014	-
0000046930	V0005067	BLACK HILLS ENERGY	07/03/2014	2,444.67
0000046931	V0004556	CITY OF LAWRENCE KANSAS	07/03/2014	4,980.72
0000046932	V0004639	CONSTELLATION NEWENERGY GAS DI	07/03/2014	5,452.67
0000046933	V0003203	GORDON N STOWE & ASSOCIATES IN	07/03/2014	3,968.00
0000046934	V0003586	RURAL WATER DIST NO5 DOUGLAS C	07/03/2014	29.00
0000046935	V0004325	USD 497 LAWRENCE PUBLIC SCHOOL	07/03/2014	1,698.72
0000046936	V0005391	VERIZON WIRELESS	07/03/2014	90.22
0000046937	V0010351	WOW! INTERNET CABLE & PHONE	07/03/2014	22,727.67

LAWRENCE PUBLIC SCHOOLS
FUND ID SUMMARY AND CHECK REGISTER
Checks Dated: 06/26/2014 - 07/14/2014

Check #	Vendor #	Vendor Name	Check Date	Amount
0000046938	V0007400	ABBOTT, MARSHA	07/14/2014	3.03
0000046939	V0004241	ALEXANDER OPEN SYSTEMS INC	07/14/2014	508,556.84
0000046940	V0007788	ALT, PAMELA	07/14/2014	20.60
0000046941	V0004977	ANDERSON RENTALS INC	07/14/2014	365.50
0000046942	V0003519	ANDERSON'S	07/14/2014	447.99
0000046943	V0003983	ANYTHING AQUATIC INC	07/14/2014	184.50
0000046944	V0010329	BARNES, KATHY	07/14/2014	7.12
0000046945	V0011756	BASORE, REBECCA	07/14/2014	60.00
0000046946	V0011190	BATTERIES + BULBS	07/14/2014	2,041.44
0000046947	V0011689	BENKELMAN, SUSAN	07/14/2014	60.00
0000046948	V0011754	BILLS ROOF REPAIR	07/14/2014	350.00
0000046949	V0005067	BLACK HILLS ENERGY	07/14/2014	714.37
0000046950	V0003427	BRAINPOP	07/14/2014	205.00
0000046951	V0004644	BROKEN ARROW ELEMENTARY	07/14/2014	6.00
0000046952	V0005237	BRUEMMER, ANN	07/14/2014	138.88
0000046953	V0004491	CAROLINA BIOLOGICAL SUPPLY COM	07/14/2014	16.40
0000046954	V0002917	CARQUEST AUTO PARTS STORES	07/14/2014	13.80
0000046955	V0003150	CARSON DELLOSA PUBLISHING LLC	07/14/2014	22.53
0000046956	V0011743	CARTER, SUNNY	07/14/2014	60.00
0000046957	V0004539	CHARLES D JONES & CO INC	07/14/2014	258.42
0000046958	V0003842	CHECKER'S	07/14/2014	30.00
0000046959	V0002883	CINTAS CORPORATION	07/14/2014	409.96
0000046960	V0004556	CITY OF LAWRENCE KANSAS	07/14/2014	100.00
0000046961	V0004556	CITY OF LAWRENCE KANSAS	07/14/2014	7,998.06
0000046962	V0011745	CLAW-TSOSIE, PATRICIA	07/14/2014	60.00
0000046963	V0011690	CLAYCAMP, TRACY	07/14/2014	60.00
0000046964	V0011691	COLLINS, SONYA	07/14/2014	120.00
0000046965	V0010613	COMPUCLAIM INC	07/14/2014	750.00
0000046966	V0011071	COOK, AMBER	07/14/2014	97.00
0000046967	V0008004	CORPENING, CHERI	07/14/2014	6.50
0000046968	V0003919	COTTIN'S HARDWARE & RENTAL	07/14/2014	72.79
0000046969	V0011692	CRAWFORD PARKER, SARAH	07/14/2014	60.00
0000046970	V0011616	CUSTOM COLOR CORPORATION	07/14/2014	4,306.50
0000046971	V0011764	DANNER KUHN, CINDY	07/14/2014	500.00
0000046972	V0011706	DEE, CATHERINE	07/14/2014	60.00
0000046973	V0005621	DEERFIELD ELEMENTARY SCHOOL	07/14/2014	110.00
0000046974	V0004678	DEGARMO, NANCY	07/14/2014	164.20
0000046975	V0010512	DILLON, MARGARET	07/14/2014	37.64
0000046976	V0003606	DILLONS CUSTOMER CHARGES	07/14/2014	15.56
0000046977	V0003606	DILLONS CUSTOMER CHARGES	07/14/2014	23.11
0000046978	V0005998	DOLL, RICHARD D	07/14/2014	303.74
0000046979	V0003990	DOUGLAS COUNTY KANSAS	07/14/2014	255.00
0000046980	V0005288	DREXEL TECHNOLOGIES	07/14/2014	1,351.96

LAWRENCE PUBLIC SCHOOLS
FUND ID SUMMARY AND CHECK REGISTER
Checks Dated: 06/26/2014 - 07/14/2014

Check #	Vendor #	Vendor Name	Check Date	Amount
0000046981	V0003851	ELECTROLIFE BATTERY INC DBA LA	07/14/2014	39.34
0000046982	V0011626	ELECTRONIX EXPRESS	07/14/2014	165.50
0000046983	V0004831	FERGUSON ENTERPRISES INC #215	07/14/2014	599.32
0000046984	V0002775	FIRST STUDENT INC	07/14/2014	180,493.93
0000046985	VOID.CONTINU	VOID - CONTINUED STUB	07/14/2014	-
0000046986	V0011640	FLAGS IMPORTER	07/14/2014	529.25
0000046987	V0004833	FLEETWOOD MOWER AND RENTAL	07/14/2014	119.96
0000046988	V0005022	FLOWERS, JENNIFER	07/14/2014	43.13
0000046989	V0011387	FOLLETT SCHOOL SOLUTIONS INC	07/14/2014	66.62
0000046990	V0004866	FOOD SERVICE	07/14/2014	55.00
0000046991	V0010221	FOULSTON SIEFKIN LLP	07/14/2014	1,282.00
0000046992	V0011403	FUELEDUCATION	07/14/2014	13,620.00
0000046993	V0008532	GARLAND/DBS INC	07/14/2014	672.18
0000046994	V0002766	GENERAL FUND	07/14/2014	2,650.00
0000046995	V0004130	GLOBAL INDUSTRIAL EQUIPMENT	07/14/2014	1,798.53
0000046996	V0008938	GOTTO, GEORGE OR LISA	07/14/2014	60.00
0000046997	V0002760	GOULD EVANS ASSOCIATES	07/14/2014	65,027.20
0000046998	V0004132	GRAINGER	07/14/2014	547.88
0000046999	V0004138	GRAYBAR	07/14/2014	6,949.28
0000047000	V0004275	GRIEB, TERESA	07/14/2014	61.50
0000047001	V0010151	HAGUE, SALLY	07/14/2014	60.00
0000047003	V0010999	HARMON, KYLIE	07/14/2014	41.80
0000047004	V0006015	HARRISON, CYNTHIA	07/14/2014	175.00
0000047005	V0011693	HARVEY, MELANIE	07/14/2014	60.00
0000047006	V0006030	HERITAGE TRACTOR INC	07/14/2014	161.88
0000047007	V0005418	HIERSCHE, SUZANNE	07/14/2014	12.55
0000047008	V0011012	HILAND DAIRY FOODS COMPANY LLC	07/14/2014	1,743.20
0000047009	V0004923	HILLCREST ELEMENTARY	07/14/2014	66.00
0000047010	V0004148	HOME DEPOT CREDIT SERVICES	07/14/2014	660.25
0000047011	V0004459	HY-VEE INC	07/14/2014	824.29
0000047012	V0003259	ICE COMMUNICATIONS INC	07/14/2014	4,639.95
0000047013	V0004473	INFORMATION NETWORK OF KANSAS	07/14/2014	391.40
0000047014	V0008312	INTEGRITY HOME CARE	07/14/2014	3,040.00
0000047015	V0002858	JAYHAWK FILE EXPRESS LLC	07/14/2014	391.52
0000047016	V0002865	JAYHAWK TROPHY COMPANY INC	07/14/2014	450.12
0000047017	V0004127	JENSEN SHARPENING SERVICES	07/14/2014	72.00
0000047018	V0009641	JOHNSON, DENISE OR MATT	07/14/2014	300.00
0000047019	V0011694	KACZOR, MARY	07/14/2014	60.00
0000047020	V0004172	KANSAS ASSOCIATION OF SCHOOL B	07/14/2014	270.00
0000047021	V0004022	KAPLAN EARLY LEARNING COMPANY	07/14/2014	172.21
0000047022	V0002776	KC PRESORT	07/14/2014	925.03
0000047023	V0005039	KENNEDY ELEMENTARY SCHOOL	07/14/2014	50.36
0000047024	V0010152	KLUG, SUSAN	07/14/2014	87.36

LAWRENCE PUBLIC SCHOOLS
FUND ID SUMMARY AND CHECK REGISTER
Checks Dated: 06/26/2014 - 07/14/2014

Check #	Vendor #	Vendor Name	Check Date	Amount
0000047025	V0004588	LAIRD NOLLER	07/14/2014	49,002.00
0000047026	V0002783	LAKESHORE LEARNING MATERIALS	07/14/2014	318.31
0000047027	V0004599	LANDPLAN ENGINEERING PA	07/14/2014	4,860.00
0000047028	V0005059	LANGSTON HUGHES ELEMENTARY SCH	07/14/2014	56.72
0000047029	V0003969	LAWRENCE FREE STATE HIGH SCHOO	07/14/2014	12,953.07
0000047030	V0003968	LAWRENCE HIGH SCHOOL	07/14/2014	10,512.54
0000047031	V0004670	LAWRENCE MEMORIAL HOSPITAL	07/14/2014	100.00
0000047032	V0003229	LEVIN DBA LINDYSPRING SYSTEMS,	07/14/2014	59.94
0000047033	V0011760	LUTZ, SUZANNE D	07/14/2014	150.00
0000047034	V0011702	MACDONALD, PAMELA	07/14/2014	120.00
0000047035	V0003238	MANPOWER	07/14/2014	7,553.48
0000047036	V0005002	MAY, DANIEL	07/14/2014	9.40
0000047037	V0010906	MCCOWNGORDON CONSTRUCTION LLC	07/14/2014	817,109.25
0000047038	V0011695	MEHMEDOVIC, JENNY	07/14/2014	60.00
0000047039	V0011744	MEHOJAH, ERIN	07/14/2014	60.00
0000047040	V0011288	MILLER, JACOLIN	07/14/2014	15.18
0000047041	V0004776	MOLLY HAWKINS HOUSE	07/14/2014	682.68
0000047042	V0010916	MOMENTA P.A.	07/14/2014	20,067.95
0000047043	V0004791	MUSIC IN MOTION	07/14/2014	392.57
0000047044	V0011696	MYERS, ELIM	07/14/2014	180.00
0000047045	V0004495	NABHOLZ CONSTRUCTION CORPORATI	07/14/2014	61,369.72
0000047046	V0003941	NASCO	07/14/2014	735.93
0000047047	V0003924	NETSUPPORT INC	07/14/2014	2,824.89
0000047048	V0011697	NIGRO, JENNIFER	07/14/2014	60.00
0000047049	V0011766	O'CONNOR, PAULA	07/14/2014	75.00
0000047050	VOID.CONTINU	VOID - CONTINUED STUB	07/14/2014	-
0000047051	V0004199	ORIENTAL TRADING CO	07/14/2014	470.54
0000047052	V0004200	ORION TELESCOPES AND BINOCULAR	07/14/2014	989.94
0000047053	V0006719	OZARK MOUNTAIN INSTALLATIONS I	07/14/2014	3,400.00
0000047054	V0003192	PATCHEN ELECTRICAL & INDUSTRIA	07/14/2014	635.70
0000047055	V0007746	PENSKE	07/14/2014	580.30
0000047056	V0002759	PERMA-BOUND BOOKS	07/14/2014	17.04
0000047057	V0002759	PERMA-BOUND BOOKS	07/14/2014	51.33
0000047058	V0004732	PETTY CASH	07/14/2014	27.50
0000047059	V0004733	PINCKNEY SCHOOL	07/14/2014	16.47
0000047060	V0003438	PITSCO INC DBA PITSCO EDUCATIO	07/14/2014	1,510.95
0000047061	V0011698	PLUMLEE, JEFFREY	07/14/2014	60.00
0000047062	V0004734	PRAIRIE PARK ELEMENTARY SCHOOL	07/14/2014	81.91
0000047063	V0004210	PRAXAIR	07/14/2014	1,190.02
0000047064	V0005961	PREMIER AUTO CO	07/14/2014	4,498.11
0000047065	V0011731	PROFFITT, DONNA	07/14/2014	7.56
0000047066	V0003922	PYRAMID SCHOOL PRODUCTS	07/14/2014	5,022.00
0000047067	V0007765	QUALITY LAWN CARE	07/14/2014	6,520.00

LAWRENCE PUBLIC SCHOOLS
FUND ID SUMMARY AND CHECK REGISTER
Checks Dated: 06/26/2014 - 07/14/2014

Check #	Vendor #	Vendor Name	Check Date	Amount
0000047068	V0004218	REALLY GOOD STUFF	07/14/2014	281.73
0000047069	V0004410	REFRIGERATION HARDWARE SUPPLY	07/14/2014	81.29
0000047070	V0003343	ROCKLER COMPANIES INC DBA ROCK	07/14/2014	61.07
0000047071	V0003585	RUESCHOFF CORPORATION	07/14/2014	17.00
0000047072	V0005562	SABATINI ARCHITECTS INC	07/14/2014	91,789.10
0000047073	V0003135	SATELLITE SHELTERS	07/14/2014	89,023.00
0000047074	V0011699	SCHNEIDER, CHRISTINE	07/14/2014	60.00
0000047075	V0003958	SCHOLASTIC INC	07/14/2014	2,057.92
0000047076	V0003962	SCHOOL SPECIALTY INC	07/14/2014	9,129.04
0000047077	V0002718	SENSENEY MUSIC INC	07/14/2014	865.83
0000047078	V0011700	SHERIDAN DUQUE, HANNAH	07/14/2014	60.00
0000047079	V0004431	SOUTH MIDDLE SCHOOL	07/14/2014	0.07
0000047080	V0011468	SPECTRUM PAINT NORTH LLC DBA S	07/14/2014	949.38
0000047081	V0003751	SPRINT SPECTRUM LP	07/14/2014	177.67
0000047082	V0002726	STANION WHOLESALE ELECTRIC COM	07/14/2014	436.24
0000047083	V0003763	STEVENS & BRAND LLP	07/14/2014	408.25
0000047084	V0003385	SUNFLOWER RESTAURANT SUPPLY IN	07/14/2014	2,371.40
0000047085	V0011517	SWEETWATER SOUND INC	07/14/2014	1,094.00
0000047086	V0003455	TAPCO PRODUCTS CO	07/14/2014	563.49
0000047087	V0004047	TARGET STORES	07/14/2014	598.53
0000047088	V0010362	TEACHSCAPE	07/14/2014	47,756.00
0000047089	V0011703	TERKILDSEN, RACHEL	07/14/2014	120.00
0000047090	V0005567	THE RIVERSIDE PUBLISHING COMPA	07/14/2014	11,253.16
0000047091	V0003704	THE TEAM SPORTING GOODS INC	07/14/2014	1,247.90
0000047092	V0007277	THE UPS STORE 5941	07/14/2014	62.74
0000047093	V0007710	THE WALDINGER CORPORATION	07/14/2014	215.00
0000047094	V0004119	U.S. SCHOOL SUPPLY INC	07/14/2014	178.90
0000047095	V0003256	US FOODSERVICE-TOPEKA DIVISION	07/14/2014	15,993.44
0000047096	V0011209	US GAMES	07/14/2014	896.14
0000047097	V0011704	VALVERDE, ROCHELLE	07/14/2014	60.00
0000047098	V0011705	VICKERS, KRISTIN	07/14/2014	60.00
0000047099	V0004137	VORT CORPORATION	07/14/2014	201.60
0000047100	V0004322	WALLACE, ANNE E	07/14/2014	92.48
0000047101	V0004166	WALMART	07/14/2014	174.10
0000047102	V0011735	WENSEL, TONI	07/14/2014	342.00
0000047103	V0004616	WEST MIDDLE SCHOOL	07/14/2014	221.57
0000047104	V0002722	WEST MUSIC COMPANY INC	07/14/2014	2,290.00
0000047105	V0002719	WESTERN EXTRALITE COMPANY	07/14/2014	104.85
0000047106	V0002723	WESTLAKE ACE HARDWARE	07/14/2014	858.97
0000047107	V0011746	WHITE, CHARLENE	07/14/2014	60.00
0000047108	V0005527	WHITE, NICOLETTE	07/14/2014	11.76
0000047109	V0011701	WOODBURY, ANN	07/14/2014	120.00
0000047110	V0011762	AMERICAN INDIAN LIBRARY ASSOCI	07/14/2014	20.00

LAWRENCE PUBLIC SCHOOLS
FUND ID SUMMARY AND CHECK REGISTER
Checks Dated: 06/26/2014 - 07/14/2014

Check #	Vendor #	Vendor Name	Check Date	Amount
0000047111	V0003211	BEAUTIFUL MUSIC VIOLIN SHOP	07/14/2014	8,100.00
0000047112	V0004148	HOME DEPOT CREDIT SERVICES	07/14/2014	80.54
0000047113	V0011639	JOHNSON COUNTY PARK & RECREATI	07/14/2014	15,000.00
0000047114	V0005204	KANSAS DEPARTMENT OF SOCIAL RE	07/14/2014	60.00
0000047115	V0005174	MEYER MUSIC CO OVERLAND PARK	07/14/2014	6,300.00
0000047116	V0009664	SCHENDEL PEST SERVICES	07/14/2014	13,804.65
0000047117	V0011468	SPECTRUM PAINT NORTH LLC DBA S	07/14/2014	201.96
0000047118	V0003471	STATE OF KANSAS	07/14/2014	450.00
0000047119	V0011791	THE HON COMPANY	07/14/2014	3,365.73
0000047120	VOID.CONTINU	VOID - CONTINUED STUB	07/14/2014	-
0000047121	V0004617	WESTAR ENERGY	07/14/2014	120,849.05
0000047122	V0006658	WILLIE DBA BAND-AIDE INSTRUMEN	07/14/2014	9,900.00
0099001771	V0004250	AMERICAN FIDELITY ASSURANCE CO	06/30/2014	18,965.60
0099001772	V0004793	GROUP PREMIUM AND ENROLLMENT S	06/30/2014	13,700.40
0099001780	V0005954	FIDELITY BROKERAGE SERVICES LL	06/27/2014	30,009.68
0099001781	V0005954	FIDELITY BROKERAGE SERVICES LL	06/27/2014	67,843.27
0099001790	V0007426	KANSAS PUBLIC EMPLOYEES RETIRE	06/26/2014	14.08
0099001791	V0004562	UNITED STATES TREASURY	06/26/2014	35.89
0099001793	V0004250	AMERICAN FIDELITY ASSURANCE CO	06/26/2014	10,255.67
0099001794	V0004832	FIDELITY INVESTMENT	06/26/2014	33.43
0099001795	V0005992	KANSAS DEPARTMENT OF REVENUE	06/26/2014	34,064.96
0099001796	V0007426	KANSAS PUBLIC EMPLOYEES RETIRE	06/26/2014	59,136.26
0099001797	V0011576	THE OMNI GROUP	06/26/2014	30,414.27
0099001798	V0004562	UNITED STATES TREASURY	06/26/2014	266,962.95
0099001799	V0004546	US BANK	06/26/2014	7,751.04
0099001800	V0004250	AMERICAN FIDELITY ASSURANCE CO	06/28/2014	21,709.20
0099001801	V0004832	FIDELITY INVESTMENT	06/28/2014	25.30
0099001802	V0005992	KANSAS DEPARTMENT OF REVENUE	06/28/2014	87,344.17
0099001803	V0007426	KANSAS PUBLIC EMPLOYEES RETIRE	06/28/2014	141,726.46
0099001804	V0011576	THE OMNI GROUP	06/28/2014	28,815.66
0099001805	V0004562	UNITED STATES TREASURY	06/28/2014	672,309.55
0099001806	V0004546	US BANK	06/28/2014	9,274.70
0099001807	V0004250	AMERICAN FIDELITY ASSURANCE CO	06/27/2014	10,255.67
0099001808	V0004832	FIDELITY INVESTMENT	06/27/2014	33.43
0099001809	V0005992	KANSAS DEPARTMENT OF REVENUE	06/27/2014	34,233.72
0099001810	V0007426	KANSAS PUBLIC EMPLOYEES RETIRE	06/27/2014	60,044.54
0099001811	V0011576	THE OMNI GROUP	06/27/2014	30,414.27
0099001812	V0004562	UNITED STATES TREASURY	06/27/2014	268,173.85
0099001813	V0004546	US BANK	06/27/2014	8,351.04
0099001814	V0004250	AMERICAN FIDELITY ASSURANCE CO	06/29/2014	22,159.20
0099001815	V0004832	FIDELITY INVESTMENT	06/29/2014	25.30
0099001816	V0005992	KANSAS DEPARTMENT OF REVENUE	06/29/2014	87,059.16
0099001817	V0007426	KANSAS PUBLIC EMPLOYEES RETIRE	06/29/2014	144,307.37

LAWRENCE PUBLIC SCHOOLS
FUND ID SUMMARY AND CHECK REGISTER
Checks Dated: 06/26/2014 - 07/14/2014

Check #	Vendor #	Vendor Name	Check Date	Amount
0099001818	V0011576	THE OMNI GROUP	06/29/2014	28,815.66
0099001819	V0004562	UNITED STATES TREASURY	06/29/2014	669,299.19
0099001820	V0004546	US BANK	06/29/2014	9,224.70
0099001821	V0005992	KANSAS DEPARTMENT OF REVENUE	06/30/2014	1,798.97
0099001822	V0007426	KANSAS PUBLIC EMPLOYEES RETIRE	06/30/2014	5,063.91
0099001823	V0004562	UNITED STATES TREASURY	06/30/2014	27,661.85
0099001824	V0011759	DOUGLAS COUNTY BANK	06/30/2014	2.00
0099001825	V0004546	US BANK	06/30/2014	5,576.68
GRAND TOTAL				7,109,624.48

To: Board of Education

From: Anna Stubblefield, director, human resources, ext. 1760
David Cunningham, director, human resources & legal services, ext. 4937

Re: Substitute Teacher Compensation

Date: July 10, 2014

Background:

Data recently compiled on area district substitute compensation rates for both daily and long-term substitutes demonstrates Lawrence Public Schools (LPS) rates are low. The average daily rate of the twelve districts surveyed is \$114.65. The LPS rate is \$100. The long-term average is \$149.67, while the LPS rate is \$128. The daily rate range is from the low of \$100 (three districts are at this level) to a high of \$131.25. The long-term range is from a low of \$120 to a high of \$208. Some districts will only use substitutes who maintain full teacher certification, while others will accept those with Emergency Substitute licenses.

It is necessary to increase the district's substitute rates to not only ensure competitiveness, but to also help address the need for additional substitutes as the professional development needs grow. The board's approval to outsource substitutes to Morgan Hunter automatically expands the pool of substitutes available, but it is also important to improve compensation to remain competitive.

Recommendation:

Staff recommends the board increase the substitute rates as follow:

Daily Rate	\$105
Long-Term Rate	\$130
Total Estimated Cost	\$43,864

Motion:

"I move the Board of Education approve an increase in substitute compensation at an estimated cost of \$43,864."

To: Board of Education

From: Angelique Kobler, assistant superintendent, teaching & learning, ext. 2440
Kevin Harrell, director, student intervention services, ext. 2221
Laura Basham, assistant director, special education, ext 2410

Re: Nursing Contracted Services with Advocate Home Specialty Care

Date: July 10, 2014

Background:

IDEA requires the district to provide nursing services to qualifying students with disabilities as documented in a student's Individual Education Plan (IEP). We currently have a student whose medical needs require a nurse at all times as outlined in the student's IEP.

Rationale:

To provide the nursing services documented in students' IEPs, the district needs to contract for nursing services. The provision of these services is required by state and federal regulations. The district will receive partial Medicaid reimbursement for contracted services.

Recommendation:

The administration recommends that the Board of Education approve the service contract between Lawrence Public Schools and Advocate Home Specialty Care at the rate of \$37 per hour; not to exceed \$74,000 for the school year. Funding will come from the Medicaid-contracted services account (2750N00053400).

Motion:

"I move the Board of Education approve the contract between Lawrence Public Schools and Advocate Home Specialty Care at the rate of \$37 per hour; not to exceed \$74,000 for the 2014-2015 school year."

SKILLED NURSING SERVICES AGREEMENT

This agreement is made and entered into this 1st day of August 2014 by and between ADVOCATE HOME SPECIALTY CARE, INC dba Advocare, (hereinafter referred to as “Provider”), and Lawrence Public Schools No. 497 ,(hereinafter referred to as USD 497).

In consideration of the mutual promises contained herein, it is understood and agreed by the parties that:

SECTION I PURPOSE

The purpose of this Agreement is to expand USD # 479 ability to provide nursing services, including the services of registered nurses and licensed practical nurses, (hereinafter referred to as “services”), when available, in schools where there are persons receiving care from USD # 497. USD # 497 bears ultimate responsibility for the administration of these services and the decision as to when and by whom services are to be provided.

The services will be rendered within the geographical area served by USD # 497 and the Provider.

SECTION II USD # 497 RESPONSIBILITIES

USD #497 shall:

1. Participate in the placement of Provider personnel by making assignments in accordance with its judgment.
2. Request Provider to assign fully qualified personnel, when available, for service to the extent practicable and in accordance with the established policies and practices of the USD # 497.
3. Determine the scope and duration of the activities of Provider’s personnel on each assignment.
4. Orient, demonstrate procedures, and regularly supervise and coordinate the performance of services by Provider’s personnel according to USD # 497 procedures.
5. Discuss with Provider’s Nursing Supervisor any problems that may arise regarding the ability of the Provider personnel to perform the assigned duties, or in his/her relationships with the Student, family, or USD # 497 staff, and to have the right to request Provider to replace any personnel assigned to USD # 497, and whom USD # 497 deems unsatisfactory. Provider shall comply with any such request. USD # 497 shall notify Provider immediately of the initiation of any complaint, inquiry, investigation, or review with or by any licensing or regulatory authority, peer review organization, hospital

committee, or other committee, organization or body which reviews quality of medical care which complaint, inquiry, investigation, or review directly or indirectly, evaluates or focuses on the quality of care provided by Provider either in any specific instance or in general.

6. Notify Provider of any changes in time schedule and weekly plan for services.

SECTION III PROVIDER RESPONSIBILITIES

Provider shall:

1. Insure that each employee in whatever job category meets the minimum health requirements established by Provider and USD # 497 for such personnel, including a state of satisfactory health and requirements for selection and training specified by the applicable federal and state laws and regulations.
2. Provide, upon request of USD # 497 and to the extent they are available, such personnel for its assignments. All nurses assigned to USD # 497 pursuant to this agreement shall be considered employees of the Provider.
3. Consult with USD # 497 about the qualifications of Provider's personnel for the assignments to be made.
4. Establish and maintain minimum standards and specifications of services to be performed by its personnel under this agreement.
5. Pay all wages to its personnel for services performed by them, and be responsible for withholding federal and state income taxes, paying Social Security taxes, unemployment insurance and maintaining workers compensation insurance coverage in an amount and under such terms as required by state law; and verify and identity and work authority of each employee under the United States immigration laws.
6. Give USD # 497 at least four (4) hours notice if Provider will be unable to provide a nurse for a scheduled assignment.

SECTION IV MUTUAL RESPONSIBILITIES

USD # 497 and Provider shall:

1. Designate a person within each agency who shall have responsibility for coordinating assignments of Provider personnel.
2. Consult and cooperate on a continuing basis with each other in the establishment of mutually acceptable standards and procedures for selection, training and assignment of personnel, handling of requests for service, billing procedures and other matters incidental to the carrying out of the provisions and purpose of this Agreement.
3. Not discriminate or permit discrimination against any employee, applicant or student on the grounds of age, race, color, religion, disability, sex, national origin, or veteran status.
4. Respect the need of each party to maintain continuity and growth in the respective employee rosters. Neither party shall solicit the employment of the other parties' employees or hire such employees during the term of the Agreement and for one year (1) after its termination.
5. Maintain the confidentiality and privacy of student records.

SECTION V COMPENSATION

1. Provider will invoice USD # 497 monthly for its services. The rates for the services are \$38.00 per hour for Registered Nurse and \$30.00 per hour for Licensed Practical Nurse. The rates for services can be amended by Provider at any time upon thirty (30) days written notice to USD # 497.
2. Payment for services rendered by Provider shall be made within (30) days from the date of invoicing.

SECTION VI INSURANCE

Provider shall maintain and during the term of this Agreement and any subsequent renewals will maintain, general liability and professional liability insurance coverage for all of its acts and omissions in the provision of the designated services with limits of not less than \$1,000,000.00 per occurrence. Provider will provide upon request, a Certificate of Insurance or other evidence of coverage, and will notify USD # 497 of any cancellation or modification of its liability insurance.

SECTION VII TERM OF AGREEMENT

1. This Agreement shall become effective on the 1st day of August 2014 and shall remain in effect until the 30th day of July 2015. It may be terminated at any time by either party upon thirty (30) days advance written notice to the other party.
2. This Agreement shall automatically renew, under the same terms and conditions, for additional one (1) year periods unless either party gives written notice to the other, at least thirty (30) days prior to the termination date of the anniversary date of any subsequent renewal, that said party does not intend for the contract to automatically renew.

SECTION VIII MISCELLANEOUS

It is understood and agreed by and between the parties hereto that:

1. This Agreement constitutes the entire contract between the parties, and may be changed or modified only by a subsequent written agreement.
2. Provider shall not assign or in any way transfer any interest in the Agreement without the prior written consent of USD # 497. None of the purchased services to be provided by Provider pursuant to this Agreement shall be subcontracted to any other organization, association, individual, partnership or group of individuals without the prior written consent of USD # 497. Any assignment, transfer or subcontract to which USD # 497 consents shall be attached together with the consent to this Agreement and made a part hereof.
3. All notices shall be in writing and shall be addressed to the parties as set forth below. Notices shall be effective upon receipt when delivered personally or by fax and shall be effective upon mailing when sent properly addressed with postage prepaid.

If to Provider:
Advocate Home Specialty Care, Inc.
dba Advocate
1004 Lincoln – PO Box 63
Wamego, KS 66547

If to USD # 497
Lawrence Public Schools No.497
110 McDonald Drive
Lawrence, KS 66044
785-832-5000

IN WITNESS WHEREOF, the parties hereto have set their hands on the dates indicated below:

By: _____
Advocate Home Specialty Care, Inc

By: _____
Lawrence Public Schools USD 497

Date: _____

Date: _____

By: _____
Lawrence Public Schools USD 497

Date: _____

To: Board of Education

From: Angelique Kobler, assistant superintendent, teaching & learning, ext. 2440
Kevin Harrell, director, student intervention services, ext. 2221
Laura Basham, assistant director, special education, ext 2410

Re: Nursing Contracted Services with Craig HomeCare

Date: July 10, 2014

Background:

IDEA requires the district to provide nursing services to qualifying students with disabilities as documented in a student's Individual Education Plan (IEP). We currently have a student whose medical needs require a nurse at all times as outlined in the student's IEP.

Rationale:

To provide the nursing services documented in students' IEPs, the district needs to contract for nursing services. The provision of these services is required by state and federal regulations. The district will receive partial Medicaid reimbursement for contracted services.

Recommendation:

The administration recommends that the Board of Education approve the service contract between Lawrence Public Schools and Craig HomeCare at the rate of \$34 per hour; not to exceed \$68,000 for the school year. Funding will come from the Medicaid-contracted services account (2750N00053400).

Motion:

"I move the Board of Education approve the contract between Lawrence Public Schools and Craig HomeCare at the rate of \$34 per hour; not to exceed \$68,000 for the 2014-2015 school year."

**CONTRACT FOR PROVIDING
NURSING SERVICES BY ARRANGEMENT WITH A SCHOOL DISTRICT**

THIS AGREEMENT is made and entered into this _____ day of _____, 2014, by and between Craig Resources, Inc. d/b/a Craig HomeCare (hereinafter referred to as "CHC"), and Lawrence Public Schools, USD 497 (hereinafter referred to as "USD 497").

WITNESSETH, that for and in consideration of the mutual promises contained herein, it is understood and agreed by the parties that:

SECTION I - PURPOSE

The purpose of this Agreement is to expand the USD 497's ability to provide nursing services, including the services of registered nurses and licensed practical nurses, (hereinafter referred to as "services"), when available, in schools where there are persons receiving care from the USD 497. The USD 497 bears ultimate responsibility for the administration of these services and the decision as to when and by whom services are to be provided.

The services will be rendered within the geographical area served by the USD 497 and CHC.

SECTION II - USD 497 RESPONSIBILITIES

The USD 497 shall:

1. Participate in the placement of CHC Personnel by making assignments in accordance with its judgment.
2. Request CHC to assign fully qualified Personnel, when available, for service to the extent practicable and in accordance with the established policies and practices of USD 497.
3. Determine the scope and duration of the activities of CHC Personnel on each assignment, orient, demonstrate procedures, and regularly supervise and coordinate the performance of services by CHC Personnel according to USD 497 procedures.
4. Discuss with CHC Nursing Supervisor any problems that may arise regarding the ability of CHC Personnel to perform the assigned duties, or in his/her relationships with the Student, family, or USD 497 staff, and to have the right to request CHC to replace any personnel assigned to USD 497, and whom USD 497 deems unsatisfactory. CHC shall comply with

any such request. USD 497 shall notify CHC immediately of the initiation of any complaint, inquiry, investigation, or review with or by any licensing or regulatory authority, peer review organization, hospital committee, or other committee, organization or body which reviews quality of medical care which complaint, inquiry, investigation, or review directly or indirectly, evaluates or focuses on the quality of care provided by CHC either in any specific instance or in general.

5. Notify CHC of any changes in time schedule and weekly plan for services.

SECTION III - CHC RESPONSIBILITIES

CHC shall:

1. Insure that each employee in whatever job category meets the minimum health requirements established by CHC and the USD 497 for such Personnel, including a statement of satisfactory health and requirements for selection and training specified by the applicable federal and state laws and regulations.
2. Provide, upon request of the USD 497 and to the extent they are available, such Personnel for its assignments. All nurses assigned to USD 497 pursuant to this agreement shall be considered employees of CHC.
3. Consult with the USD 497 about the qualifications of its Personnel for the assignments to be made.
4. Establish and maintain minimum standards and specifications of services to be performed by its Personnel under this Agreement.
5. Pay all wages to its Personnel for services performed by them, and be responsible for withholding federal and state income taxes, paying Social Security taxes, unemployment insurance and maintaining workers' compensation insurance coverage in an amount and under such terms as requested by state law; and verify the identity and work authority of each employee under the United States immigration laws.
6. Give USD 497 at least four (4) hours notice if CHC will be unable to provide a nurse for a scheduled assignment.

SECTION IV - MUTUAL RESPONSIBILITIES

The USD 497 and CHC shall:

1. Designate a person within each agency who shall have responsibility for coordinating assignments of CHC Personnel.
2. Consult and cooperate on a continuing basis with each other in the establishment of mutually acceptable standards and procedures for selection, training and assignment of Personnel, handling of requests for service, billing procedures and other matters incidental to the carrying out of the provisions and purpose of this Agreement.
3. Not discriminate or permit discrimination against any employee, applicant or Student on the grounds of age, race, color, religion, disability, sex, national origin, or veteran status.
4. Respect the need of each party to maintain continuity and growth in their respective employee rosters. Neither party shall solicit the employment of the other parties' employees or hire such employees during the term of the Agreement and for ninety (90) days after its termination.
5. Maintain the confidentiality and privacy of Student records.

SECTION V - COMPENSATION

CHC will invoice USD 497 monthly for its services. The rates for services are attached as Exhibit A to this Agreement. The rates for services established in Exhibit A can be prospectively amended by CHC at any time upon thirty (30) days notice to USD 497 .

Payment for services rendered by CHC shall be made within sixty (60) days from the date of invoicing. Unpaid accounts will be considered in default after forty-five (45) days at which time a default charge will be imposed at one and one-half percent (1.5%) per month on unpaid balances (annual percentage rate of eighteen percent 18%) or the maximum legal interest rate, whichever is lower.

SECTION VI - INSURANCE

CHC shall maintain and, during the term of this Agreement and any subsequent renewals will maintain, general liability and professional liability insurance coverage for all of its acts and omissions in the provision of the designated services with limits of not less than \$1,000,000 per occurrence. CHC will provide

upon request, a Certificate of Insurance or other evidence of coverage, and will notify USD 497 of any cancellation or modification of its liability insurance.

CHC assumes the risk of all damage, loss, cost, expense, including attorney fees and agrees to indemnify and hold harmless USD 497, its officers, agents and employees from and against any and all liability, damage, loss, cost, expense, including attorney fees, which may accrue to or be sustained by USD 497, its officers, agents or employees on account of any claim, suit or action made or brought against USD 497, its officers, agents or employees, for the death of or injury to persons or destruction of property involving CHC, its employees, agents and representatives, sustained in connection with the performance of services by CHC, its employees, agents and representatives, pursuant to the performance of this agreement.

SECTION VII - TERM OF AGREEMENT - MISCELLANEOUS

It is understood and agreed by and between the parties hereto that:

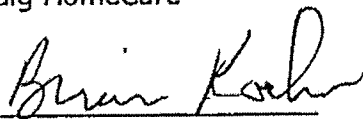
1. This Agreement, including Exhibit A, constitutes the entire contract between the parties, and may be changed or modified only by a subsequent written agreement.
2. This Agreement shall become effective upon the 1st day of August, 2014, and shall remain in effect until July 31, 2015. It may be terminated at any time by either party upon thirty (30) days advance written notice to the other party.
3. CHC shall not assign or in any way transfer any interest in this Agreement without the prior written consent of USD 497. None of the purchased services to be provided by CHC pursuant to this Agreement shall be subcontracted to any other organization, association, individual, partnership or group of individuals without the prior written consent of the USD 497. Any assignment, transfer or subcontract to which the USD 497 consents shall be attached together with the consent to this Agreement and made a part hereof.
4. All notices shall be in writing and shall be addressed to the parties as set forth below. Notices shall be effective upon receipt when delivered personally or by FAX and shall be effective upon mailing when sent properly addressed with postage prepaid.

If to CHC:
Craig Resources, Inc. d/b/a
Craig HomeCare
910 E Douglas Ave
Wichita, Kansas 67202

If to USD 497:
USD 497
Lawrence Public Schools
110 McDonald Dr
Lawrence, Kansas 66044

IN WITNESS WHEREOF, the parties hereto have set their hands on the dates indicated below:

Craig Resources, Inc. d/b/a
Craig HomeCare



By: Brian Koehn
Title: Chief Financial Officer

Date: 6/19/2014

Lawrence Public Schools
USD 497, LEA

By: _____
Title: _____

Date: _____

By: _____
Title: _____

Date: _____

EXHIBIT A

Bill Rate Schedule

July, 2014

	Hourly Rate
Registered Nurse	\$34.00
Licensed Practical Nurse	\$31.00

All rates are per hour.

To: Board of Education

From: Angelique Kobler, assistant superintendent, teaching & learning, ext. 2440
Terry McEwen, director, assessment & instructional resources, ext. 2613
Ellen Willets, assistant director, assessment & instructional resources, ext. 4769

Re: Renewal of Follett Software Company: Destiny Library & Textbook Resource Management Solutions

Date: July 10, 2014

Background:

Follett Destiny Library and Textbook Resource Management Solutions software is the current web-based library and textbook management system utilized by the district. This software provides inventory management of both library resources and district instructional resources – textbooks, consumables, etc. The system allows for precise checkout of these resources to schools, teachers, and students and provides the district an accurate inventory of instructional resources to ensure appropriate quantities at any point during the school year.

Rationale:

This expenditure represents the renewal costs for both the library and textbook systems. This renewal quote extends 13 months to align all library and textbook licenses to expire on August 31, 2015.

Recommendation:

The administration recommends that the Board of Education approve the renewal quote with Follett Software Company for the Destiny Library and Textbook Resource Management Solutions.

The purchase will be paid from Teaching and Learning General Funds and Student Materials Funds.

Motion:

"I move the Board of Education authorize administration to renew Follett Software Company Destiny Library and Textbook Resource Management Solutions in an amount not to exceed \$28,971.56."

To: Board of Education

From: Angelique Kobler, assistant superintendent, teaching & learning, ext. 2440
Terry McEwen, director, assessments & instructional resources, ext. 2613
Ellen Willets, assistant director, assessments & instructional resources, ext. 4769

Re: Purchase of Consumable Instructional Resources for 2014-2015 School Year

Date: July 10, 2014

Background:

A few middle school and high school courses use consumable workbooks to support the curriculum. This enclosure represents the cost for the 2014-2015 school year consumable resources.

Spanish
French
German
Chemistry
AP Chemistry
Accounting

Recommendation:

It is recommended that the Board of Education approve the purchase of Follett's consumable materials in the amount of \$20,154.81 (shipping included). This will be paid from Student Materials funds.

Motion:

"I move the Board of Education approve payment in the amount of \$20,154.81 for the purchase of consumable materials (including estimated shipping costs) from Follett for the 2014-2015 school year."

To: Board of Education

From: Dr. Angelique Kobler, assistant superintendent, teaching & learning, ext. 2440

Re: Contract for Pacific Educational Group Professional Development for 2014-2015

Date: July 10, 2014

Background:

One of the Board of Education goals is to raise achievement for all students and to close our achievement gaps. Lawrence Public Schools began working with the Pacific Educational Group (PEG) in 2009-2010 to address this goal through a comprehensive professional development plan.

PEG provides professional development and technical assistance services for administrators, board members, teachers, parents and community members. The 2014-2015 contract continues our current professional development plan for racial equity and closing the racial achievement gap.

Rationale:

At the recommendation of the District Equity Leadership Team (DELT), the contract provides for seven Beyond Diversity seminars for staff, board members, equity council members and community members; and, two one-day leadership workshops for operational and classified equity leadership teams.

Beyond Diversity	September 10-11, 2014
E-Team (ESDC Cadre) #3	September 23, 2014
Beyond Diversity	October 01-02, 2014
Beyond Diversity	November 18-19, 2014
Beyond Diversity	January 13-14, 2015
E-Team (ESDC Cadre) #4	February 03, 2015
Beyond Diversity	February 12-13, 2015
Beyond Diversity	March 10-11, 2015
Beyond Diversity	April 21-22, 2015

Recommendation:

The administration recommends the payment of \$89,200 plus expenses for the Pacific Educational Group professional development contract. Funding of this payment has been budgeted and will be paid from: district professional development fund account number 2022130000-53300.

Motion:

"I move the Board of Education approve payment in the amount of \$89,200 plus expenses for the Pacific Educational Group contract for 2014-2015 professional services."



Contract for Professional Services

Service Provider: Pacific Educational Group, Inc. (PEG)

Corporate Tax Identification Number: 77-0362992

Contract Service Period: School Year 2014-2015

PURPOSE:

Lawrence Public Schools has contracted with Pacific Educational Group, Inc. to provide the following services: 2014-2015 Lawrence PD Plan Attached.

FEE:

The total fee for the professional development services provided by Pacific Educational Group under this contract is \$ 89,200.00

ADDITIONAL NOTES:

The Pacific Educational Group, Inc. *Professional Services Cancellation Policy* is attached. "The DA-146a is attached and incorporated herein."

Signatures:

President, Board of Education

Date

Glenn Singleton, President
Pacific Educational Group

Date

Please send signed copies of the Contract and Cancellation Policy within 30 days to:

Nikol Brandon
Pacific Educational Group, Inc.
795 Folsom Street, 1st Floor
San Francisco, CA 94107

A copy of the fully executed contract will be returned to the School District



**Pacific Educational Group, Inc.
Professional Services Cancellation Policy**

The following Professional Services Cancellation Policy should be thoroughly reviewed, signed by an authorized official, and returned to Pacific Educational Group, Inc. prior to the commencement of contractual services. Pacific Educational Group will not enter into a contractual agreement with any school, district, organization or agenda without first having this document on file in our office.

- All requests for cancellation of professional services will be made in writing and forwarded via US Mail, courier, fax or e-mail to Pacific Educational Group, Inc.
- Client requests for service cancellation received 90 business days prior to the scheduled commencement of services will be granted without penalty for any incurred expenses.
- Client requests for service cancellation received less than 90 business days but more than 60 business days prior to the scheduled commencement of services will result in charges for all expenses and/or penalties incurred for travel arrangements, materials development, and consultant/staff preparation time, if any, calculated at an hourly rate equivalent to 10% of the standard daily consultant fee.
- Client requests for service cancellation received less than 60 business days but more than 30 business days prior to the scheduled commencement of services will result in charges for all expenses and/or penalties incurred for travel arrangements, plus 60% of the contracted fee for the cancelled dates.
- Client requests for service cancellation received less than 30 business days prior to the scheduled commencement of services will result in charges for all expenses and/or penalties incurred for travel arrangements, plus 90% of the contracted fee for the cancelled dates.
- Client requests for service postponement due to severe weather or natural or physical disaster will result in charges for expenses and/or penalties incurred for travel arrangements, but will not be charged for consultant fees if the dates are immediately rescheduled.
- Services immediately rescheduled for reasons other than the aforementioned will be dealt with on an individual basis.

Authorized Signature

Title

Organization

Date

CONTRACTUAL PROVISIONS ATTACHMENT

Important: This form contains mandatory contract provisions and must be attached to or incorporated in all copies of any contractual agreement. If it is attached to the vendor/contractor's standard contract form, then that form must be altered to contain the following provision:

"The Provisions found in Contractual Provisions Attachment (Form DA-146a, Rev. 06-12), which is attached hereto, are hereby incorporated in this contract and made a part thereof."

The parties agree that the following provisions are hereby incorporated into the contract to which it is attached and made a part thereof, said contract being the _____ day of _____, 20_____.

1. **Terms Herein Controlling Provisions:** It is expressly agreed that the terms of each and every provision in this attachment shall prevail and control over the terms of any other conflicting provision in any other document relating to and a part of the contract in which this attachment is incorporated. Any terms that conflict or could be interpreted to conflict with this attachment are nullified.
2. **Kansas Law and Venue:** This contract shall be subject to, governed by, and construed according to the laws of the State of Kansas, and jurisdiction and venue of any suit in connection with this contract shall reside only in courts located in the State of Kansas.
3. **Termination Due To Lack Of Funding Appropriation:** If, in the judgment of the Director of Accounts and Reports, Department of Administration, sufficient funds are not appropriated to continue the function performed in this agreement and for the payment of the charges-hereunder, State may terminate this agreement at the end of its current fiscal year. State agrees to give written notice of termination to contractor at least 30 days prior to the end of its current fiscal year, and shall give such notice for a greater period prior to the end of such fiscal year as may be provided in this contract, except that such notice shall not be required prior to 90 days before the end of such fiscal year. Contractor shall have the right, at the end of such fiscal year, to take possession of any equipment provided State under the contract. State will pay to the contractor all regular contractual payments incurred through the end of such fiscal year, plus contractual charges incidental to the return of any such equipment. Upon termination of the agreement by State, title to any such equipment shall revert to contractor at the end of the State's current fiscal year. The termination of the contract pursuant to this paragraph shall not cause any penalty to be charged to the agency or the contractor.
4. **Disclaimer Of Liability:** No provision of this contract will be given effect that attempts to require the State of Kansas or its agencies to defend, hold harmless, or indemnify any contractor or third party for any acts or omissions. The liability of the State of Kansas is defined under the Kansas Tort Claims Act (K.S.A. 75-6101 et seq.).
5. **Anti-Discrimination Clause:** The contractor agrees: (a) to comply with the Kansas Act Against Discrimination (K.S.A. 44-1001 et seq.) and the Kansas Age Discrimination in Employment Act (K.S.A. 44-1111 et seq.) and the applicable provisions of the Americans With Disabilities Act (42 U.S.C. 12101 et seq.) (ADA) and to not discriminate against any person because of race, religion, color, sex, disability, national origin or ancestry, or age in the admission or access to, or treatment or employment in, its programs or activities; (b) to include in all solicitations or advertisements for employees, the phrase "equal opportunity employer"; (c) to comply with the reporting requirements set out at K.S.A. 44-1031 and K.S.A. 44-1116; (d) to include those provisions in every subcontract or purchase order so that they are binding upon such subcontractor or vendor; (e) that a failure to comply with the reporting requirements of (c) above or if the contractor is found guilty of any violation of such acts by the Kansas Human Rights Commission, such violation shall constitute a breach of contract and the contract may be cancelled, terminated or suspended, in whole or in part, by the contracting state agency or the Kansas Department of Administration; (f) if it is determined that the contractor has violated applicable provisions of ADA, such violation shall constitute a breach of contract and the contract may be cancelled, terminated or suspended, in whole or in part, by the contracting state agency or the Kansas Department of Administration.

Contractor agrees to comply with all applicable state and federal anti-discrimination laws.

The provisions of this paragraph number 5 (with the exception of those provisions relating to the ADA) are not applicable to a contractor who employs fewer than four employees during the term of such contract or whose contracts with the contracting State agency cumulatively total \$5,000 or less during the fiscal year of such agency.

6. **Acceptance Of Contract:** This contract shall not be considered accepted, approved or otherwise effective until the statutorily required approvals and certifications have been given.
7. **Arbitration, Damages, Warranties:** Notwithstanding any language to the contrary, no interpretation of this contract shall find that the State or its agencies have agreed to binding arbitration, or the payment of damages or penalties. Further, the State of Kansas and its agencies do not agree to pay attorney fees, costs, or late payment charges beyond those available under the Kansas Prompt Payment Act (K.S.A. 75-6403), and no provision will be given effect that attempts to exclude, modify, disclaim or otherwise attempt to limit any damages available to the State of Kansas or its agencies at law, including but not limited to the implied warranties of merchantability and fitness for a particular purpose.
8. **Representative's Authority To Contract:** By signing this contract, the representative of the contractor thereby represents that such person is duly authorized by the contractor to execute this contract on behalf of the contractor and that the contractor agrees to be bound by the provisions thereof.
9. **Responsibility For Taxes:** The State of Kansas and its agencies shall not be responsible for, nor indemnify a contractor for, any federal, state or local taxes which may be imposed or levied upon the subject matter of this contract.
10. **Insurance:** The State of Kansas and its agencies shall not be required to purchase any insurance against loss or damage to property or any other subject matter relating to this contract, nor shall this contract require them to establish a "self-insurance" fund to protect against any such loss or damage. Subject to the provisions of the Kansas Tort Claims Act (K.S.A. 75-6101 et seq.), the contractor shall bear the risk of any loss or damage to any property in which the contractor holds title.
11. **Information:** No provision of this contract shall be construed as limiting the Legislative Division of Post Audit from having access to information pursuant to K.S.A. 46-1101 et seq.
12. **The Eleventh Amendment:** "The Eleventh Amendment is an inherent and incumbent protection with the State of Kansas and need not be reserved, but prudence requires the State to reiterate that nothing related to this contract shall be deemed a waiver of the Eleventh Amendment."
13. **Campaign Contributions / Lobbying:** Funds provided through a grant award or contract shall not be given or received in exchange for the making of a campaign contribution. No part of the funds provided through this contract shall be used to influence or attempt to influence an officer or employee of any State of Kansas agency or a member of the Legislature regarding any pending legislation or the awarding, extension, continuation, renewal, amendment or modification of any government contract, grant, loan, or cooperative agreement.

To: Board of Education

From: Jerri Kemble, assistant superintendent, educational programs & technology, ext. 2755
Melinda Stanley, director, information technology services, ext. 4442

Re: Payment for E-Rate Solutions, LLC Consulting Services

Date: July 10, 2014

Background:

USD 497 applies for E-Rate funding on an annual basis. The federal E-Rate program, managed by USAC and overseen by the FCC, provides schools with funding for telecommunications, internet access and internal connections. E-Rate Solutions, LLC is a consulting company that provides USD497 with assistance in managing the cumbersome E-Rate application, review, and reimbursement process to receive E-Rate funds.

Rationale:

E-Rate Solutions, LLC has assisted USD 497 in the E-Rate application cycle for the 2014 funding year (July 1, 2014 – June 30, 2015) including application submission, documentation for the PIA review process and forms submission for receiving E-Rate funding in association with basic telecommunications, internet access, and leased fiber services. The amount of E-Rate funding support we expect to receive from USAC is approximately \$227,600.

Recommendation:

The administration recommends approval of payment to E-Rate Solutions, LLC for the 9% rate of E-Rate funding support based on Invoice #1170, dated 06/19/2014.

Motion:

"I move the Board of Education approve a payment of \$20,492.08 to E-Rate Solutions, LLC for their services in support of the district's federal E-Rate application process."

eRate Solutions, L.L.C.

PO Box 1426
Lawrence, KS 66044

Invoice

Date	Invoice #
6/19/2014	1170
Due Date	7/21/2014

Bill To
Lawrence USD 497 Attn: Melinda Stanley 110 McDonald Dr. Lawrence, KS 66044

Item	FRN	Funding Co...	Rate	Notes	Fee
2014 E-Rate Consulting	2657171	17,748.07	0.09		1,597.33
2014 E-Rate Consulting	2657175	11,202.97	0.09		1,008.27
2014 E-Rate Consulting	2657228	4,222.69	0.09		380.04
2014 E-Rate Consulting	2657236	1,359.40	0.09		122.35
2014 E-Rate Consulting	2657326	36,538.98	0.09		3,288.51
2014 E-Rate Consulting	2657364	17,537.50	0.09		1,578.38
2014 E-Rate Consulting	2675504	139,080.00	0.09		12,517.20
FOR BILLING INQUIRIES CALL 1-866-333-7283.					
Total					\$20,492.08

To: Board of Education

From: Kyle Hayden, assistant superintendent, business & operations, ext. 4309
Tony Barron, director, facilities & operations, ext. 1643

Re: Pavement Maintenance – East Heights

Date: July 11, 2014

Background:

On January 13, 2014, the Board of Education approved the Capital Improvement Project list which provided for improvements to East Heights. These improvements were needed in order for Cordley students to attend there in the 2014-2015 school year. Because of deterioration and wear, improvements to the parking and hard surfaces are needed.

Bids and Specifications:

Bids were sent out and included mobilization, removal of existing pavement, a 2" overlay on most of the parking area, and a 6" overlay on areas that will have heavier traffic. The bid also included concrete parking blocks and parking lot striping.

Two contractors responded and both bids came in under the engineers estimated budget.

Recommendation:

Administration recommends board approval of a contract with Bettis Asphalt in the amount of \$46,797, for the removal and replacement of the asphalt parking lot at East Heights and an additional parking area.

Motion:

"I move the Board of Education approve a contract with Bettis Asphalt in the amount of \$46,797 for pavement maintenance at East Heights."

To Board of Education

From: Jerri Kemble, assistant superintendent, educational programs & technology, ext. 2755
Melinda Stanley, director, technology, ext. 4442

Re: Amendment to Alexander Open Systems Order

Date: July 10, 2014

Background:

On May 12, 2014, the Board of Education approved two quotes from Alexander Open Systems, Inc (AOS) for Wireless Infrastructure Equipment and Accessories, Quote 107056, \$1,147,575.13 and Quote 107127, \$631,981.41.

Rationale:

Since May, AOS has been able to re-evaluate the district's need and has offered a replacement quote with upgraded equipment and efficiencies for less money. The revised quote replaces Quote 107127 for \$631,981.41 with Quote 107440 for \$463,364.41, a savings of \$168,617.

Recommendation:

Administration recommends acceptance of the suggested changes from AOS and replacement of the previously approved Quote 107127 for \$631,981.41 with the new Quote 107440 for \$463,364.41, a savings of 168,617.

Motion:

"I move the Board of Education approve the replacement of Quote 107440 with Alexander Open Systems, Inc. for \$463,364.41, replacing Quote 107127 previously approved on May 12, 2014."

Alexander Open Systems, Inc.

QUOTATION

Kansas City

12980 Foster #300
Overland Park, KS 66213
Phone: 913-307-2300
Fax: 913-307-2380

Wichita

Epic Center
301 N. Main #1850
Wichita, KS 67202
Phone: 316-269-1400
Fax: 316-269-1403

Topeka

900 Kansas Suite# 303
Topeka, KS 66612
Phone: 785-228-2727
Fax: 785-228-9877

Quote No.: Q107127

Customer ID: LAWRE-001

Date: 5/5/2014

Sales Rep: ALANLA

Designer:

Please visit www.aos5.com for a complete listing of all service areas

ORIGINAL QUOTE TO BE REPLACED WITH QUOTE: 107440

QUOTE TO:	SHIP TO:
<p>ACCOUNTS PAYABLE LAWRENCE USD 497 110 MCDONALD DRIVE LAWRENCE, KS 66044</p> <p>Phone: (785) 330-4536 Fax: (785) 832-5016</p>	<p>MELINDA STANLEY LAWRENCE USD 497 110 MCDONALD DRIVE LAWRENCE, KS 66044-1063</p>

MATERIALS ONLY

Furnish products and coordinate warranties and service agreements as specified.

KS STATE CONTRACT NO. 10330

PR NO. 014436

*Agencies may not use credit cards for purchases from this contract.

Cisco Ship Date as of 05/05/2014 is 14-21 days

Thank you for the opportunity to be of service.

QUANTITY	DESCRIPTION	PART NUMBER	UNIT PRICE	EXTENDED PRICE
Nexus 7K				
1.00	Nexus7009 Bundle(Chassis2xSUP2E5xFAB2)No Power Supplies	N7K-C7009-B2S2E-R	65,744.00	65,744.00
2.00	Nexus 7000 - 6.0KWAC Power Supply Module	N7K-AC-6.0KW	3,522.00	7,044.00
1.00	Cisco NX-OS Release 6.2(2a) for SUP2 Nexus 7000	N7KS2K9-622A	0.00	0.00
1.00	Inc LANADVTRSEL2DCNMDCNMSANMPLSSANXL - Promotion	N7K-C7009-SBUN-P1	44,025.00	44,025.00
1.00	DCNM for LAN Enterprise License for one Nexus 7000 Chassis	DCNM-N7K-K9-SBUN	0.00	0.00
1.00	DCNM for SAN Advanced Edition for Nexus 7000	DCNM-SANN7KK9-SBUN	0.00	0.00
1.00	Nexus 7000 Advanced LAN Enterprise License (VDC CTS ONLY)	N7K-ADV1K9-SBUN	0.00	0.00
1.00	Nexus 7009 Scalable Feature License	N7K-C7009-XL-SBUN	0.00	0.00
1.00	Nexus 7000 Enhanced layer 2 (includes FabricPath RISE)	N7K-EL21K9-SBUN	0.00	0.00
1.00	Nexus 7000 LAN Enterprise License (L3 protocols)	N7K-LAN1K9-SBUN	0.00	0.00
1.00	Nexus 7000 MPLS License	N7K-MPLS1K9-SBUN	0.00	0.00
1.00	Nexus 7000 SAN Enterprise License	N7K-SAN1K9-SBUN	0.00	0.00
1.00	Nexus 7000 Transport Services License	N7K-TRS1K9-SBUN	0.00	0.00
1.00	Nexus 7000 - Supervisor 2 EnhancedIncludes 8GB USB Flash	N7K-SUP2E	0.00	0.00
1.00	Nexus 7K USB Flash Memory - 8GB (Log Flash)	N7K-USB-8GB	0.00	0.00
1.00	Nexus 7000 - Supervisor 2 EnhancedIncludes 8GB USB Flash	N7K-SUP2E	0.00	0.00
1.00	Nexus 7K USB Flash Memory - 8GB (Log Flash)	N7K-USB-8GB	0.00	0.00
1.00	Nexus 7000 F2-Series 48 Port 1/10G (SFP+) Enhanced	N7K-F248XP-25E	25,828.00	25,828.00
9.00	1000BASE-LX/LH SFP transceiver module MMF/SMF 1310nm DOM	GLC-LH-SMD	584.07	5,256.59
1.00	10GBASE-ER SFP Module	SFP-10G-ER	5,870.00	5,870.00
1.00	10GBASE-LR SFP Module	SFP-10G-LR	2,345.07	2,345.07
4.00	10GBASE-SR SFP Module	SFP-10G-SR	584.07	2,336.26
1.00	Nexus 7000 F2-Series 48 Port 1/10GBase-T (RJ-45) Enhanced	N7K-F248XT-25E-P1	17,023.00	17,023.00

Alexander Open Systems, Inc.

QUOTATION

Kansas City

12980 Foster #300
Overland Park, KS 66213
Phone: 913-307-2300
Fax: 913-307-2380

Wichita

Epic Center
301 N. Main #1850
Wichita, KS 67202
Phone: 316-269-1400
Fax: 316-269-1403

Topeka

900 Kansas Suite# 303
Topeka, KS 66612
Phone: 785-228-2727
Fax: 785-228-9677

Quote No.: Q107127
Customer ID: LAWRE-001
Date: 5/5/2014
Sales Rep: ALANLA
Designer:

2

Please visit www.aos5.com for a complete listing of all service areas

1.00	Nexus 7000 F2-Series 48 Port 1/10GBase-T (RJ-45) Enhanced	N7K-F248XT-25E-P1	17,023.00	17,023.00
1.00	Nexus 7000 F2-Series 48 Port 1/10GBase-T (RJ-45) Enhanced	N7K-F248XT-25E-P1	17,023.00	17,023.00
5.00	Nexus 7000 - 9 Slot Chassis - 110Gbps/Slot Fabric Module	N7K-C7009-FAB-2	0.00	0.00
4.00	AC POWER CORD NORTH AMERICA (110V)	CAB-7513AC	0.00	0.00
1.00	Nexus 7009 Front Door Kit	N7K-C7009-FD-MB	880.50	880.50
1.00	DCNM Advanced License Kit for Nexus and MDS switches	DCNM-PAK	0.00	0.00
3.00	Nexus 7000 - I/O Module Blank Slot Cover	N7K-MODULE-BLANK	0.00	0.00
			210,398.42	
1.00	Nexus7009 Bundle(Chassis2xSUP2E5xFAB2)No Power Supplies	N7K-C7009-B2S2E-R	65,744.00	65,744.00
1.00	DCNM for SAN Advanced Edition for Nexus 7000	DCNM-SANN7KK9-SBUN	0.00	0.00
2.00	Nexus 7000 - 6.0KWAC Power Supply Module	N7K-AC-6.0KW	3,522.00	7,044.00
1.00	Cisco NX-OS Release 6.2(2a) for SUP2 Nexus 7000	N7KS2K9-622A	0.00	0.00
1.00	Inc LANADVTRSEL2DCNMDCNMSANMPLSSANXL - Promotion	N7K-C7009-SBUN-P1	44,025.00	44,025.00
1.00	DCNM for LAN Enterprise License for one Nexus 7000 Chassis	DCNM-N7K-K9-SBUN	0.00	0.00
1.00	Nexus 7000 Advanced LAN Enterprise License (VDC CTS ONLY)	N7K-ADV1K9-SBUN	0.00	0.00
1.00	Nexus 7009 Scalable Feature License	N7K-C7009-XL-SBUN	0.00	0.00
1.00	Nexus 7000 Enhanced layer 2 (includes FabricPath RISE)	N7K-EL21K9-SBUN	0.00	0.00
1.00	Nexus 7000 LAN Enterprise License (L3 protocols)	N7K-LAN1K9-SBUN	0.00	0.00
1.00	Nexus 7000 MPLS License	N7K-MPLS1K9-SBUN	0.00	0.00
1.00	Nexus 7000 SAN Enterprise License	N7K-SAN1K9-SBUN	0.00	0.00
1.00	Nexus 7000 Transport Services License	N7K-TRS1K9-SBUN	0.00	0.00
1.00	Nexus 7000 - Supervisor 2 EnhancedIncludes 8GB USB Flash	N7K-SUP2E	0.00	0.00
1.00	Nexus 7K USB Flash Memory - 8GB (Log Flash)	N7K-USB-8GB	0.00	0.00
1.00	Nexus 7000 - Supervisor 2 EnhancedIncludes 8GB USB Flash	N7K-SUP2E	0.00	0.00
1.00	Nexus 7K USB Flash Memory - 8GB (Log Flash)	N7K-USB-8GB	0.00	0.00
1.00	Nexus 7000 F2-Series 48 Port 1/10G (SFP+) Enhanced	N7K-F248XP-25E	25,828.00	25,828.00
9.00	100GBASE-LX/LH SFP transceiver module MMF/SMF 1310nm DOM	GLC-LH-SMD	584.07	5,256.59
1.00	10GBASE-LR SFP Module	SFP-10G-LR	2,345.07	2,345.07
8.00	10GBASE-SR SFP Module	SFP-10G-SR	584.07	4,672.52
1.00	Nexus 7000 F2-Series 48 Port 1/10GBase-T (RJ-45) Enhanced	N7K-F248XT-25E-P1	17,023.00	17,023.00
1.00	Nexus 7000 F2-Series 48 Port 1/10GBase-T (RJ-45) Enhanced	N7K-F248XT-25E-P1	17,023.00	17,023.00
1.00	Nexus 7000 F2-Series 48 Port 1/10GBase-T (RJ-45) Enhanced	N7K-F248XT-25E-P1	17,023.00	17,023.00
5.00	Nexus 7000 - 9 Slot Chassis - 110Gbps/Slot Fabric Module	N7K-C7009-FAB-2	0.00	0.00
4.00	AC POWER CORD NORTH AMERICA (110V)	CAB-7513AC	0.00	0.00
1.00	Nexus 7009 Front Door Kit	N7K-C7009-FD-MB	880.50	880.50
1.00	DCNM Advanced License Kit for Nexus and MDS switches	DCNM-PAK	0.00	0.00
3.00	Nexus 7000 - I/O Module Blank Slot Cover	N7K-MODULE-BLANK	0.00	0.00
			206,864.68	

Catalyst 4507R

1.00	Catalyst4500E 7 slot chassis for 48Gbps/slot fan no ps	WS-C4507R+E	4,106.07	4,106.07
------	--	-------------	----------	----------

Alexander Open Systems, Inc.

QUOTATION

Kansas City

12980 Foster #300
Overland Park, KS 66213
Phone: 913-307-2300
Fax: 913-307-2380

Wichita

Epic Center
301 N. Main #1850
Wichita, KS 67202
Phone: 316-269-1400
Fax: 316-269-1403

Topeka

900 Kansas Suite# 303
Topeka, KS 66612
Phone: 785-228-2727
Fax: 785-228-9677

Quote No.: Q107127

Customer ID: LAWRE-001

Date: 5/5/2014

Sales Rep: ALANLA

Designer:

3

Please visit www.aos5.com for a complete listing of all service areas

1.00	90 Day Full Trial of Lancope Stealthwatch up to 2000 fps	FNF-LC	0.00	0.00
1.00	Catalyst 4500 E-Series Supervisor 8-E	WS-X45-SUP8-E	11,737.07	11,737.07
1.00	Catalyst 4500 E-Series Redundant Supervisor 8-E	WS-X45-SUP8-E/2	11,737.07	11,737.07
1.00	Catalyst 4500 E-Series 48-Port 10/100/1000 Non-Blocking	WS-X4748-RJ45-E	4,106.07	4,106.07
1.00	10GBASE-LR SFP Module	SFP-10G-LR	2,345.07	2,345.07
4.00	10GBASE-SR SFP Module	SFP-10G-SR	584.07	2,336.26
1.00	CAT4500e SUP8e Universal Crypto Image	S8EUK9-33-1511XO	0.00	0.00
1.00	Catalyst 4500 1300WAC Power Supply (Data and PoE)	PWR-C45-1300ACV	584.07	584.07
2.00	NEMA 5-20 to IEC-C19 14ft US	CAB-US520-C19-US	0.00	0.00
1.00	Catalyst 4500 E-Series 12-Port GE (SFP)	WS-X4612-SFP-E	3,519.07	3,519.07
8.00	1000BASE-LX/LH SFP transceiver module MMF/SMF 1310nm DOM	GLC-LH-SMD	584.07	4,672.52
1.00	Catalyst 4500 E-Series 12-Port 10GbE (SFP+)	WS-X4712-SFP+E	15,846.07	15,846.07
1.00	10GBASE-ER SFP Module	SFP-10G-ER	5,870.00	5,870.00
1.00	Catalyst 4500 1300WAC Power Supply (Data and PoE)	PWR-C45-1300ACV/2	584.07	584.07
1.00	Catalyst 4500 E-Series Family Slot Cover	C4K-SLOT-CVR-E	0.00	0.00
1.00	Paper IP to Ent Services License	C4500E-IP-ES	5,867.07	5,867.07
1.00	Catalyst 4500 E-Series 12-Port GE (SFP)	WS-X4612-SFP-E	3,519.07	3,519.07
8.00	1000BASE-LX/LH SFP transceiver module MMF/SMF 1310nm DOM	GLC-LH-SMD	584.07	4,672.52
				81,502.07

5YR Maintenance

1.00	5yr PRTNR SUP 24X7X4 Nexus7009 Bundle(Cha	CON-PSUP-N7K-C7009	43,115.10	43,115.10
1.00	5yr PRTNR SUP SW UPG Inc LANADVTRSEL2	CON-PSUU-N7K-C709	0.00	0.00
1.00	5yr PRTNR SUP SW UPG DCNM for LAN Enterpr	CON-PSUU-N7DCNMSB	4,424.70	4,424.70
1.00	5yr PRTNR SUP SW UPG DCNM for SAN Advanced Edition for Nexus	CON-PSUU-7DCSANSB	9,292.85	9,292.85
1.00	5yr PRTNR SUP 24X7X4 Nexus7009 Bundle(Cha	CON-PSUP-N7K-C7009	43,115.10	43,115.10
1.00	5yr PRTNR SUP SW UPG DCNM for SAN Advanced Edition for Nexus	CON-PSUU-7DCSANSB	9,292.85	9,292.85
1.00	5yr PRTNR SUP SW UPG Inc LANADVTRSEL2	CON-PSUU-N7K-C709	0.00	0.00
1.00	5yr PRTNR SUP SW UPG DCNM for LAN Enterpr	CON-PSUU-N7DCNMSB	4,424.70	4,424.70
1.00	5yr PRTNR SUP 24X7X4 Catalyst4500E 7 slot chassis for 48Gbps	CON-PSUP-C4507R+E	13,293.70	13,293.70
				126,959.00

Merchandise Total 625,724.17

Shipping 6,257.24

Document Total \$631,981.41

Above quoted pricing is valid for 30 days.

Quoted pricing does not include sales tax. Sales tax, if applicable, will be charged on final invoice. All taxable items will be charged appropriate tax rates based on end users jurisdiction.

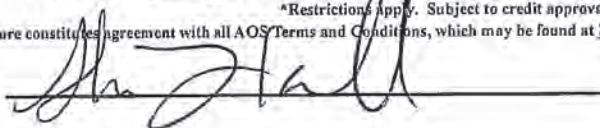
If customer is tax exempt, a valid tax exemption permit must be on file with AOS at the time of billing.

Total solution financing* is available. Ask your account manager how you can avoid upfront cost and pay for your solution over time.

*Restrictions apply. Subject to credit approval and documentation.

Customer signature constitutes agreement with all AOS Terms and Conditions, which may be found at <http://www.aos5.com/terms> in addition to any addendums shown on this quote.

Customer Signature



Date

5/28/14

Alexander Open Systems, Inc.

PO 2

QUOTATION

Kansas City	Wichita	Topeka	Quote No.: Q107440
12980 Foster #300	Epic Center	900 Kansas Suite# 303	Customer ID: LAWRE-001
Overland Park, KS 66213	301 N. Main #1850	Topeka, KS 66612	Date: 5/20/2014
Phone: 913-307-2300	Wichita, KS 67202	Phone: 785-228-2727	Sales Rep: ALANLA
Fax: 913-307-2380	Phone: 316-269-1400	Fax: 785-228-9677	Designer:
	Fax: 316-269-1403		

NEW QUOTE

Please visit www.aos5.com for a complete listing of all service areas

1

QUOTE TO:	SHIP TO:
ACCOUNTS PAYABLE LAWRENCE USD 497 110 MCDONALD DRIVE LAWRENCE, KS 66044 Phone: (785) 330-4536 Fax: (785) 832-5016	MELINDA STANLEY LAWRENCE USD 497 110 MCDONALD DRIVE LAWRENCE, KS 66044-1063

MATERIALS ONLY

Furnish products and coordinate warranties and service agreements as specified.

KS STATE CONTRACT NO. 10330

PR NO. 014436

*Agencies may not use credit cards for purchases from this contract.

Cisco Ship Date as of 05/20/2014 is 14-21 days.

Thank you for the opportunity to be of service.

Lawrence USD - Nexus and Catalyst V3

QUANTITY	DESCRIPTION	PART NUMBER	UNIT PRICE	EXTENDED PRICE
1.00	Nexus 7706 Bundle (Chassis2xSUP2E3xFAB2)No Power Supplies	N77-C7706-B23S2E-R	52,830.00	52,830.00
1.00	5yr PRTNR SUP 24X7X4 Nexus 7706 Bundle (C	CON-PSUP-7706B23R	41,895.00	41,895.00
1.00	Cisco NX-OS Release 6.2 for Nexus 7700 Series	N77S2K9-62	0.00	0.00
1.00	Nexus 7700 LAN Enterprise License (L3 protocols)	N77-LAN1K9	8,805.00	8,805.00
1.00	Nexus 7700 Transport Services License (OTV/LISP)	N77-TRS1K9	14,675.00	14,675.00
1.00	Nexus 7700 - Supervisor 2 Enhanced	N77-SUP2E	0.00	0.00
1.00	Nexus 7700 - Supervisor 2 Enhanced	N77-SUP2E	0.00	0.00
1.00	Nexus 7700 F3-Series 48 Port 1/10GbE (SFP/SFP+)	N77-F348XP-23	25,828.00	25,828.00
1.00	10GBASE-ER SFP Module	SFP-10G-ER	5,870.00	5,870.00
1.00	10GBASE-LR SFP Module	SFP-10G-LR	2,345.07	2,345.07
4.00	10GBASE-SR SFP Module	SFP-10G-SR	584.07	2,336.26
3.00	Nexus 7700 - 6 Slot Chassis 220Gbps/Slot Fabric Module	N77-C7706-FAB-2	0.00	0.00
2.00	Nexus 7700 - 3.0KW AC Power Supply Module (Cable Included)	N77-AC-3KW	1,761.00	3,522.00
2.00	AC POWER CORD NORTH AMERICA (110V)	CAB-7513AC	0.00	0.00
2.00	Nexus 7700 - Power Supply Blank Slot Cover With Handle	N77-3KPS-BLANK-H	0.00	0.00
3.00	Nexus 7700 - Module Blank Slot Cover	N77-MODULE-BLANK	0.00	0.00
				158,106.33
1.00	N2K-C2248TP-E-1GE (48x100/1000-T+4x10GE) airflow/PS option	N2K-C2248TP-E	5,283.00	5,283.00
1.00	5yr PRTNR SUP 24X7X4 Null SKU-No line item services included	CON-PSUP-C2248TPE	0.00	0.00
4.00	10GBASE-CU SFP+ Cable 3 Meter	SFP-H10GB-CU3M	123.27	493.08
2.00	Power Cord 200/240V 6A North America	CAB-N5K6A-NA	0.00	0.00
1.00	Standard Airflow pack:N2K-C2248TP-E-1GE 2 AC PS 1Fan	N2248TP-E-FA-BUN	0.00	0.00

Alexander Open Systems, Inc.

QUOTATION

Kansas City	Wichita	Topeka	Quote No.: Q107440
12980 Foster #300	Epic Center	900 Kansas Suite# 303	Customer ID: LAWRE-001
Overland Park, KS 66213	301 N. Main #1850	Topeka, KS 66612	Date: 5/20/2014
Phone: 913-307-2300	Wichita, KS 67202	Phone: 785-228-2727	Sales Rep: ALANLA
Fax: 913-307-2380	Phone: 316-269-1400	Fax: 785-228-9677	Designer:
	Fax: 316-269-1403		

2

Please visit www.aos5.com for a complete listing of all service areas

1.00	5yr PRTNR SUP 24X7X4 Standard Airflow pack:N2K-C2248TP-E-1GE	CON-PSUP-2248EFA	1,136.80	1,136.80
				6,912.88
1.00	Nexus 7706 Bundle (Chassis2xSUP2E3xFAB2)No Power Supplies	N77-C7706-B23S2E-R	52,830.00	52,830.00
1.00	5yr PRTNR SUP 24X7X4 Nexus 7706 Bundle (C	CON-PSUP-7706B23R	41,895.00	41,895.00
1.00	Cisco NX-OS Release 6.2 for Nexus 7700 Series	N77S2K9-62	0.00	0.00
1.00	Nexus 7700 LAN Enterprise License (L3 protocols)	N77-LAN1K9	8,805.00	8,805.00
1.00	Nexus 7700 Transport Services License (OTV/LISP)	N77-TRS1K9	14,675.00	14,675.00
1.00	Nexus 7700 - Supervisor 2 Enhanced	N77-SUP2E	0.00	0.00
1.00	Nexus 7700 - Supervisor 2 Enhanced	N77-SUP2E	0.00	0.00
1.00	Nexus 7700 F3-Series 48 Port 1/10GbE (SFP/SFP+)	N77-F348XP-23	25,828.00	25,828.00
1.00	10GBASE-LR SFP Module	SFP-10G-LR	2,345.07	2,345.07
8.00	10GBASE-SR SFP Module	SFP-10G-SR	584.07	4,672.52
3.00	Nexus 7700 - 6 Slot Chassis 220Gbps/Slot Fabric Module	N77-C7706-FAB-2	0.00	0.00
2.00	Nexus 7700 - 3.0KW AC Power Supply Module (Cable Included)	N77-AC-3KW	1,761.00	3,522.00
2.00	AC POWER CORD NORTH AMERICA (110V)	CAB-7513AC	0.00	0.00
2.00	Nexus 7700 - Power Supply Blank Slot Cover With Handle	N77-3KPS-BLANK-H	0.00	0.00
3.00	Nexus 7700 - Module Blank Slot Cover	N77-MODULE-BLANK	0.00	0.00
				154,572.59
1.00	N2K-C2248TP-E-1GE (48x100/1000-T+4x10GE) airflow/PS option	N2K-C2248TP-E	5,283.00	5,283.00
1.00	5yr PRTNR SUP 24X7X4 Null SKU-No line item services included	CON-PSUP-C2248TPE	0.00	0.00
4.00	10GBASE-CU SFP+ Cable 3 Meter	SFP-H10GB-CU3M	123.27	493.08
2.00	Power Cord 200/240V 6A North America	CAB-N5K6A-NA	0.00	0.00
1.00	Standard Airflow pack:N2K-C2248TP-E-1GE 2 AC PS 1Fan	N2248TP-E-FA-BUN	0.00	0.00
1.00	5yr PRTNR SUP 24X7X4 Standard Airflow pack:N2K-C2248TP-E-1GE	CON-PSUP-2248EFA	1,136.80	1,136.80
				6,912.88
1.00	Catalyst 4500-X 32 Port 10G IP Base Front-to-Back No P/S	WS-C4500X-32SFP+	16,436.00	16,436.00
1.00	5yr PRTNR SUP 24X7X4 Catalyst 4500-X 32 Port 10G IP Base Fro	CON-PSUP-C45X32SF	9,101.75	9,101.75
1.00	Catalyst 4500X Network Module Blank	C4KX-NM-BLANK	0.00	0.00
1.00	Catalyst 4500X 750W AC front to back cooling power supply	C4KX-PWR-750AC-R	1,174.00	1,174.00
1.00	Catalyst 4500X 750W AC front to back cooling 2nd PWR supply	C4KX-PWR-750AC-R/2	1,174.00	1,174.00
2.00	NEMA 5-15 to IEC-C15 8ft US	CAB-US515-C15-US	0.00	0.00
1.00	CAT4500-X Universal Image	S45XU-34-1512SG	0.00	0.00
1.00	IP Base to Ent. Services license for 32 Port Catalyst 4500-	C4500X-IP-ES	4,696.00	4,696.00
				32,581.75
6.00	CWDM 1470 NM SFP Gigabit Ethernet and 1G/2G FC	CWDM-SFP-1470=	2,932.07	17,592.39
6.00	5yr PRTNR SUP 8X5X4 CWDM 1470 NM SFP Gig	CON-PSUE-CWSFP	0.00	0.00
				17,592.39
4.00	CWDM 1490 NM SFP Gigabit Ethernet and 1G/2G FC	CWDM-SFP-1490=	2,932.07	11,728.26
4.00	5yr PRTNR SUP 8X5X4 CWDM 1470 NM SFP Gig	CON-PSUE-CWSFP	0.00	0.00

Alexander Open Systems, Inc.

QUOTATION

Kansas City	Wichita	Topeka
12980 Foster #300	Epic Center	900 Kansas Suite# 303
Overland Park, KS 66213	301 N. Main #1850	Topeka, KS 66612
Phone: 913-307-2300	Wichita, KS 67202	Phone: 785-228-2727
Fax: 913-307-2380	Phone: 316-269-1400	Fax: 785-228-9677
	Fax: 316-269-1403	

Quote No.: Q107440

Customer ID: LAWRE-001

Date: 5/20/2014

Sales Rep: ALANLA

Designer:

3

Please visit www.aos5.com for a complete listing of all service areas

				11,728.26
4.00	CWDM 1510 NM SFP Gigabit Ethernet and 1G/2G FC	CWDM-SFP-1510=	2,932.07	11,728.26
4.00	5yr PRTNR SUP 8X5X4 CWDM 1470 NM SFP Gig	CON-PSUE-CWSFP	0.00	0.00
				11,728.26
4.00	CWDM 1530 NM SFP Gigabit Ethernet and 1G/2G FC	CWDM-SFP-1530=	2,932.07	11,728.26
4.00	5yr PRTNR SUP 8X5X4 CWDM 1470 NM SFP Gig	CON-PSUE-CWSFP	0.00	0.00
				11,728.26
4.00	CWDM 1550 NM SFP Gigabit Ethernet and 1G/2G FC	CWDM-SFP-1550=	2,932.07	11,728.26
4.00	5yr PRTNR SUP 8X5X4 CWDM 1470 NM SFP Gig	CON-PSUE-CWSFP	0.00	0.00
				11,728.26
4.00	CWDM 1570 NM SFP Gigabit Ethernet and 1G/2G FC	CWDM-SFP-1570=	2,932.07	11,728.26
4.00	5yr PRTNR SUP 8X5X4 CWDM 1470 NM SFP Gig	CON-PSUE-CWSFP	0.00	0.00
				11,728.26
4.00	CWDM 1590 NM SFP Gigabit Ethernet and 1G/2G FC	CWDM-SFP-1590=	2,932.07	11,728.26
4.00	5yr PRTNR SUP 8X5X4 CWDM 1470 NM SFP Gig	CON-PSUE-CWSFP	0.00	0.00
				11,728.26
4.00	CWDM 1610 NM SFP Gigabit Ethernet and 1G/2G FC	CWDM-SFP-1610=	2,932.07	11,728.26
4.00	5yr PRTNR SUP 8X5X4 CWDM 1470 NM SFP Gig	CON-PSUE-CWSFP	0.00	0.00
				11,728.26

Merchandise Total 458,776.64

Shipping 4,587.77

Document Total \$463,364.41

Above quoted pricing is valid for 30 days.

Quoted pricing does not include sales tax. Sales tax, if applicable, will be charged on final invoice. All taxable items will be charged appropriate tax rates based on end users jurisdiction. If customer is tax exempt, a valid tax exemption permit must be on file with AOS at the time of billing.

Total solution financing* is available. Ask your account manager how you can avoid upfront cost and pay for your solution over time.

*Restrictions apply. Subject to credit approval and documentation.

Customer signature constitutes agreement with all AOS Terms and Conditions, which may be found at <http://www.aos5.com/terms> in addition to any addendums shown on this quote.

Melinda Stanley

Customer Signature

Date May 20, 2014

To: Board of Education

From: Ron May, director, administrative services

Re: Online Enrollment

Date: July 10, 2014

Background:

In the spring of 2013, the district investigated the possibility of making the enrollment process for Lawrence Public Schools paperless. This process would eliminate paperwork and man-hours entering information into Skyward. On June 10 the Board of Education approved a purchase contract with SRC Solutions for the Registration Gateway online enrollment system. Implementation of this system can be found in the board goals under Goal 5: Deliver Quality Programs and Services; Integrated Management Systems #2: Implement new online enrollment system.

Personnel from the Enrollment Center, IT, and Teaching and Learning worked with SRC Solutions throughout the 2013-14 school year to develop the online enrollment process. Forms were placed online and integrations with Skyward were tested. Documents like birth certificates, proof of residency, and immunizations are able to be scanned and stored in an electronic filing system called DocuShare. Most recently, the district provided Spanish translations for text so a Spanish translation of the web pages can be provided for families that need it. The system went live in May and parents are now able to enroll their students electronically. Families may enroll their students from any computer with access to the Internet or come to the Enrollment Center and use a laptop computer.

Next steps will be to continue to ensure the collection and uploading of pertinent information. We will also look to implement this online software to collect "pre-enrollment" information from current students for the following school year.

The link for enrolling can be found at <http://registration.usd497.org>

To: Board of Education

From: Dr. Rick Doll, superintendent

Re: Future Land Use Planning

Date: July 10, 2014

Background:

USD 497 staff has conducted several discussions with city staff concerning the use of district-owned land and the potential sale, purchase and/or trade of land. These discussions are tied to some school district building projects and long-range planning.

As part of this agenda item, staff will review parcels of land owned by the district and ask for feedback from the board concerning future plans.

No board action is recommended at this time.