



LAWRENCE
PUBLIC SCHOOLS
APRIL 2017
NEWSLETTER

CHECK YOUR MAILBOX

OFFICIAL BALLOT **SPECIAL QUESTION ELECTION**

A Douglas County B State of Kansas C May 2, 2017

Instructions to Voter

! Notice: If you tear, deface or make a mistake and wrongfully mark any ballot, you must return it to the election office and receive a new ballot or set of ballots.

To vote in favor of any question submitted upon this ballot, darken the oval ☐ to the left of the word, "Yes." To vote against any question submitted upon this ballot, darken the oval ☐ the left of the word "No."

To vote you must darken the oval completely

Use black or blue ball point pen.

QUESTION SUBMITTED
U.S.D 497

Shall the following be adopted?
Shall Unified School District No. 497, Douglas County, Kansas, be authorized to issue general obligation bonds in the amount of \$10,000,000 for the construction of a new high school building in the City of Lawrence, Kansas?

DOUGLAS COUNTY ELECTION OFFICE
1100 MASSACHUSETTS ST STE 100
LAWRENCE KS 66044

RETURN SERVICE REQUESTED
OFFICIAL BALLOTING MATERIAL

**To: USD 497
Registered Voter**



May 2, 2017, Lawrence School Bond Mail-Ballot Election

Lawrence Journal-World Advertising supplement sponsored by:

**FLINT HILLS
TECHNICAL
COLLEGE**

KU NATURAL HISTORY
MUSEUM
The University of Kansas

**Lawrence
Pediatrics, p.a.**
TRUITY
CREDIT UNION

PANDA
PEDIATRIC
MEDICINE, P. A.

SUNFIRE CERAMICS
Pottery Painting & Fused Glass
Make your own Gifts Art & Decor.



DR. KEVIN LENAHA
OPTOMETRIST



the spectacle
—eyewear center—

**UNIVERSITY
of SAINT MARY**

WAKASHAW, LLC
Wakarusa
Oral Surgery
4901 Legends Dr. Lawrence, KS, 66049
785.856.6010 785.841.6480

LAWRENCE BOARD OF EDUCATION



Marcel Harmon
President

Term: 2015-2017
785-550-7749
mharmon@usd497.org



Shannon Kimball
Vice President

Term: 2015-2019
785-840-7722
skimball@usd497.org



Jessica Beeson

Term: 2015-2019
785-691-6678
jbeeson@usd497.org



Jill Fincher

Term: 2015-2019
785-865-5870
jfincher@usd497.org



Rick Ingram

Term: 2015-2019
785-864-9819
ringram@usd497.org



Melissa Johnson

Term: 2017-2018
913-940-1730
mjohnson@usd497.org



Vanessa Sanburn

Term: 2013-2017
785-856-1233
vsanburn@usd497.org

Photos by Diane Guthrie, except Beeson, Fincher and Johnson

Table of Contents

3	Superintendent's Message New Elementary Spaces
4-5	It's Lawrence High's Time!
6	Accommodating Growth at Free State High School
7	Learning Forward, Future Ready
8-9	Middle School Improvements
10	Tax Impact Q&A Energy-Efficient, High-Performance Schools
11	Election Instructions and Timeline



Lawrence Public Schools

110 McDonald Drive
Lawrence, KS 66044-1063
785-832-5000
www.usd497.org
Facebook.com/LawrencePublicSchools

Kyle Hayden,
Superintendent of Schools

This newsletter was paid for by USD 497 to provide the community information about the May 2, 2017, Lawrence School Bond Mail-Ballot Election. It was produced by the USD 497 Communications Office, Julie Boyle, director, in partnership with the *Lawrence Journal-World*.

Lawrence Public Schools USD 497 is an equal opportunity employer and will not discriminate in its employment practices and policies. Discrimination against any individual on the basis of race, color, religion, sex, age, national origin, disability, sexual orientation or gender identity is prohibited by Lawrence Board of Education policy.

Board Meeting Calendar

April 24

May 8 & 22

June 12 & 26

Public meetings begin at 7 p.m. on the second and fourth Mondays of the month, unless otherwise announced, at 110 McDonald Drive. Review school board agendas and meeting video archives or watch a webstream of board meetings online at: www.usd497.org. View live broadcasts of board meetings on LPS-TV 26 with a Midco cable box.

ON the COVER



Supporting Student-Centered Learning

With elementary schools transformed into 21st-century learning environments thanks to the community's support of its 2013 school bond election, the Lawrence Board of Education turned its attention to a facilities master planning process to address the needs of Lawrence High School and the other secondary schools. The board contracted Gould Evans Associates to meet with a Facilities Planning Committee, Lawrence High Steering Committee, and middle and high school administrators and staff, conduct focus groups and student surveys, visit districts with new high school facilities of similar size, and work with engineering and construction firms on a comprehensive analysis of programmatic and building needs. The board reviewed the analysis and approved an \$87 million bond election for improvements. Its goal: create school environments that support personalized learning, student engagement and success.

This publication provides information about the bond projects proposed for Lawrence High School, Free State High School and Liberty Memorial Central, South, Southwest and West Middle Schools.

The Douglas County Clerk's Office will mail ballots to all registered voters in USD 497 on April 12. Vote by marking the ballot in black or blue ink, signing the back of the postage-paid envelope and mailing it back. Completed ballots must be received by noon on May 2, 2017, to be counted. Ballots may be hand-delivered to the Clerk's Office or dropped in the County Business Depository on the south side of the Douglas County Courthouse by noon on May 2.

Cover photos of high school students by Free State and Lawrence High Journalism and Lawrence College and Career Center staff.



Find it at
www.usd497.org

- Facility Master Plan
- Bond Scope & Budget Summary
- School Bond Project Plans
- Bond Election Tax Impact
- Bond Ballot Language & Election Timeline



Dear USD 497 Patrons,

In addition to the critical need for a highly qualified and effective teacher for every classroom, the physical environment of a school plays a role in student success. When designed with students in mind, school environments can stimulate learning.

A successful school bond election in 2013 enabled Lawrence Public Schools to redesign, reconstruct and renovate 14 elementary schools, including some 80-, 90- and 100-year-old facilities. The school board and district leadership seized this opportunity to reimagine the concept of the learning spaces within our schools. Driving the planning and design process: the district's commitment to personalizing student learning by blending the best of teacher-directed instruction with digital learning to improve student engagement, motivation and success.

In personalized learning environments, we extend the reach of teachers and tailor instruction to individual student strengths, needs and interests, including giving students voice and choice in the path, pace and place of their learning. We empower students to take ownership of their educational goals and support them within and beyond the walls of the traditional classroom.

We can already see in our elementary schools the transformative effects of environments designed to support 21st-century, student-centered learning. Our current facilities master plan seeks to extend similar benefits to Lawrence middle and high school students. The May 2, 2017, Lawrence School Bond Mail-Ballot Election provides safe and secure campuses, addresses equity across facilities and accommodates student enrollment growth. It delivers energy-efficient, high-performance schools that promote student and staff wellness and success. It constructs flexible spaces inside and outside of classrooms, in corridors, library media centers, and outdoor learning courtyards that will enhance students' educational experiences and opportunities to collaborate, create and innovate.

I believe you will see our students at the heart of this plan.

Sincerely,
Kyle Hayden
Superintendent of Schools

21st-Century Elementary Learning Environments

With elementary schools transformed into 21st-century learning environments thanks to the community's support of its 2013 school bond election, the Lawrence Board of Education turned its attention to a facilities master planning process and the May 2, 2017, Lawrence School Bond Mail-Ballot Election to address the needs of Lawrence High School and the other secondary schools.



Half Price Sale

DR. KEVIN LENAHA
OPTOMETRIST



the spectacle
— eyewear center —

TOPEKA • NORTH TOPEKA
SE TOPEKA • SW TOPEKA
LAWRENCE • LYNDON
TONGANOXIE

50% OFF FRAME & LENSES

Coupon must be presented at the time of service, see store for details or exclusions.
Coupon expires 5/21/17

785-838-3200 • www.lenahaneyedoc.com • 935 Iowa St # 3, Lawrence, KS 66044

LAWRENCE HIGH TO RECEIVE

SAFE AND SECURE CAMPUS

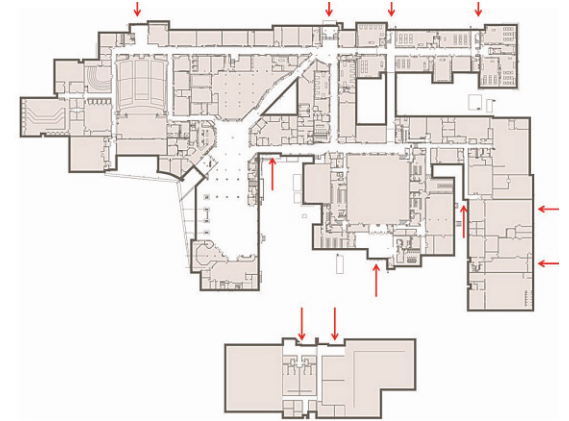
The school board designated nearly 60% of the total amount of the bond issue to upgrade Lawrence High School, a 63-year-old facility. Providing a safe and secure campus tops the priority list. Multiple entry points at LHS create security issues and challenges with supervision.

The plan includes gutting and reconstructing classrooms inside the annex, connecting the annex to the main building and enclosing the campus between the main building and the auxiliary gym and natatorium. This will create an enclosed outdoor learning/dining courtyard in that space.



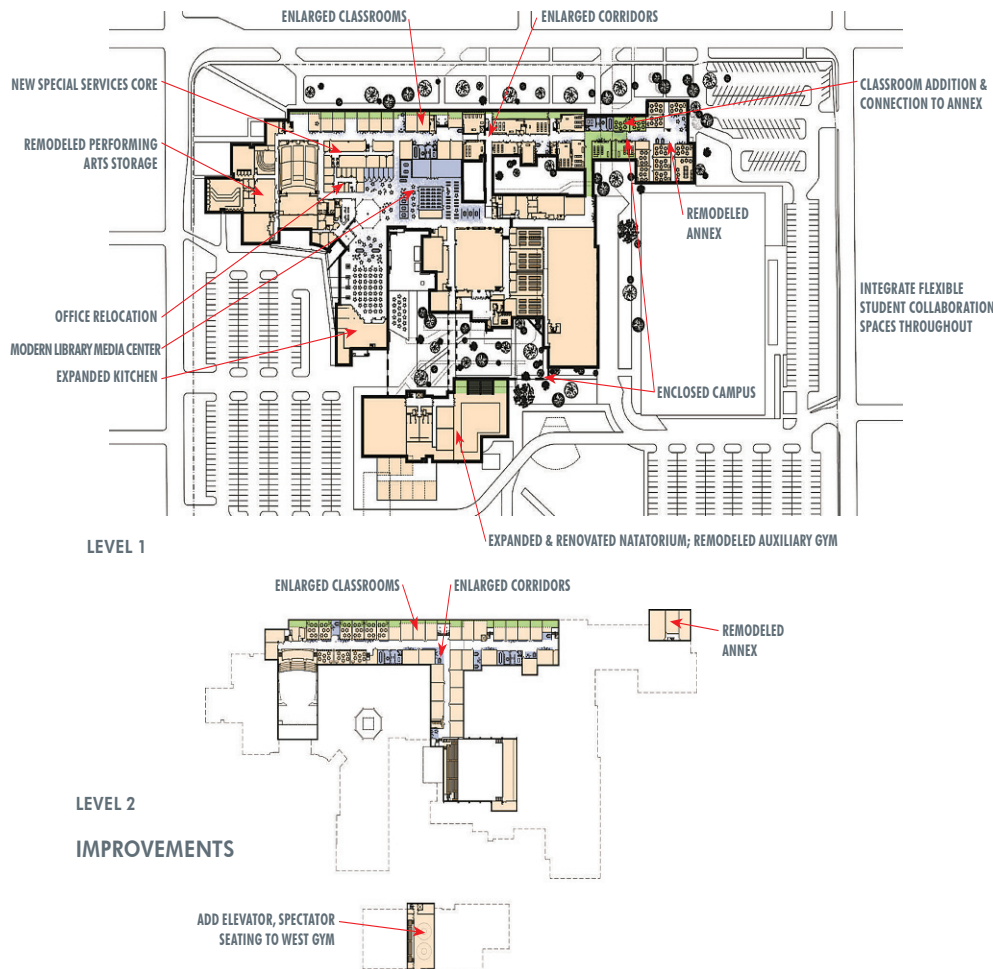
LAWRENCE HIGH SCHOOL

» Create a safe and secure campus.



» Many unsecured points of entry create safety concerns and supervision challenges.

LAWRENCE HIGH SCHOOL - \$50.8 MILLION



Approx. 27,000 sq. ft. of additions

- Provide a safe and secure campus
- Add classrooms
- Enlarge existing classrooms, corridors and kitchen serving area
- Connect to annex and provide covered walkway to west gym/natatorium

Approx. 288,000 sq. ft. of renovation

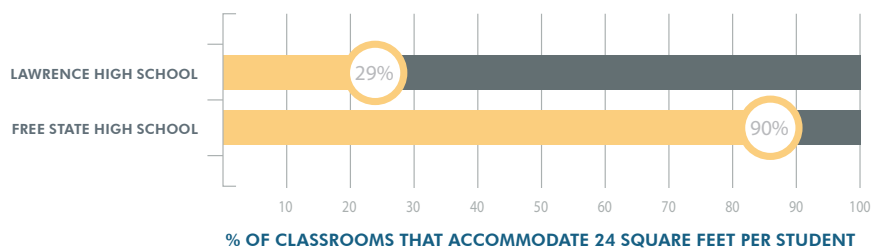
- Enlarge classrooms and corridors
- Renovate all classrooms, except recently renovated science classrooms
- Renovate fine arts, career and technical, and special services areas
- Modernize library media center
- Create flexible student collaboration spaces
- Establish outdoor learning/dining spaces
- Expand and renovate natatorium (new HVAC, expanded pool deck and bleachers)
- Renovate auxiliary gym (install elevator and new permanent bleachers in mezzanine and separate gym from wrestling room)
- Renovate restrooms and locker rooms
- Repair/replace roofs needing work through 2020
- Upgrade infrastructure and install energy-efficient, high-performance building systems
- Reroute fire lane and public entrance to 19th and 21st streets
- Expand bus lane

LION'S SHARE OF BOND BUDGET

The bond election addresses equity issues between the two high schools. The current standard size for high school classrooms is 24 square feet per student. While 90% of Free State High School's classrooms meet that standard, only 29% of Lawrence High's classrooms do. Under-sized classrooms and corridors at Lawrence High limit flexibility and movement of students and create safety issues. Through classroom additions and renovations at LHS, the bond issue enlarges classrooms and corridors and creates flexible student collaboration spaces to extend learning beyond the traditional classroom. The project calls for a total transformation of Lawrence High at less than a third of the estimated cost of building a new facility and expands the school's capacity to 2,000 students.

Much like the recent elementary projects, new construction will be phased to minimize disruption to student learning, including construction of additions during the school year and renovation taking place during the summer months, as much as possible. Conceptual images shown in bond election information serve as examples of modern, flexible student collaboration spaces. If the community supports these investments, school-based committees would work with architects and construction managers on the final planning and design of all construction and renovation projects.

CLASSROOM SIZE COMPARISON



Crowded Corridor



Under-sized Classrooms



Conceptual Image



FHTC Industrial Engineering and Power Plant Technology programs at Peaslee Tech

Flint Hills Technical College will offer Industrial Engineering and Power Plant Technology programs at the Dwayne Peaslee Technology Training Center in Lawrence, Kansas beginning Fall 2017.

Learn the skills to become career ready in these exciting and in-demand fields, while staying in your local area. Apply online or call 620.343.4600 for more information.

Become a Wrangler. Apply today at fhtc.edu/apply



PEASLEE
TECH

FLINT HILLS
TECHNICAL
COLLEGE

620.343.4600 • fhtc.edu
askus@fhtc.edu

The “New” High School’s Not so New

The “new high school,” as some call it, turns 20 years old this year. Much like a home, a school begins to show wear after 20 years and requires attention. A classroom addition tops improvements planned for Free State High School. The school’s enrollment has grown by 250 students during the past five years, forcing at least half of its teachers to pick up and move from classroom to classroom during the school day. A two-story addition of seven classrooms on the south side of the building near the library will expand Free State’s capacity to 2,000 students.

Other improvements include modernizing the library media center and creation of student collaboration spaces. With the implementation of 1:1 technology, libraries

no longer serve as students’ primary destination for accessing information and technology. Library spaces formerly dominated by desktop computers can now serve as gathering and collaboration spaces used by students throughout the course of the day. The facilities master plan envisions modern school library media centers becoming more fluid, flexible-use areas for hands-on, project-based learning, individual study, group collaboration, maker space and digital production labs, with areas scattered throughout dedicated to books and other print resources. Help desks or “Genius Bars” provide areas for students to help peers (and adults!) with technology questions, share technical expertise and learn a marketable skill, supporting others’ technology use.



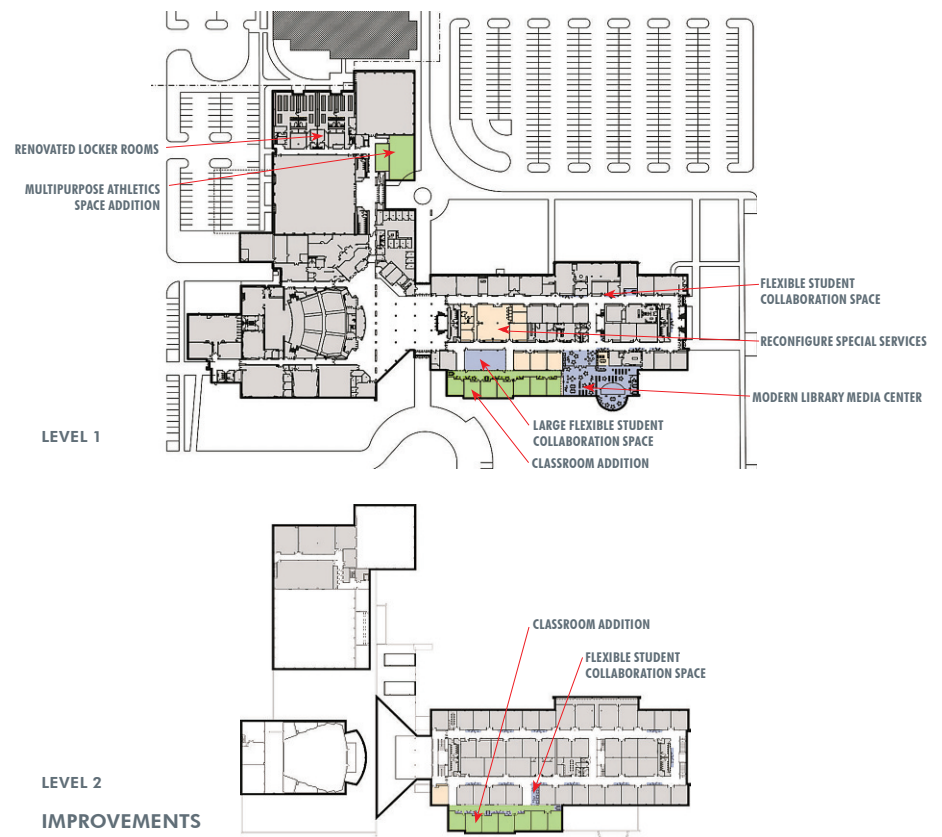
Approx. 18,000 sq. ft. of additions

- Accommodate growth with classroom addition
- Create large flexible student collaboration space
- Expand multipurpose space

Approx. 21,000 sq. ft. of renovation

- Incorporate flexible student collaboration spaces
- Modernize library media center
- Improve layout and function of special services area
- Increase number of lockers in P.E. and athletic locker rooms
- Renovate restrooms and locker rooms
- Repair/replace roofs needing work through 2020
- Upgrade infrastructure and install energy-efficient, high-performance building systems
- Resurface main parking lot and provide additional parking south of athletic fields
- Add sidewalks

FREE STATE HIGH SCHOOL - \$15.2 MILLION





Learning Forward, Future Ready

"Our challenge is to commit to ensuring every child is future ready." Superintendent Kyle Hayden goes on to explain that the district's Learning Forward, Future Ready philosophy prepares students with 21st-century skills and strategies they need to compete globally.

"It's about ensuring that teachers receive the professional development and support they need to positively interact with students. It's about our schools being creative and resourceful and engaging students through meaningful and relevant learning," said Hayden. "We have an opportunity to level the playing field and close the digital divide. Our district is poised to create a learning culture and provide every student access to the tools necessary to foster their essential skill sets, support their creativity and inspire students to learn and achieve even more than we thought possible."

The Lawrence Board of Education's annual goals have guided the district's exploration of how to provide students equitable access to technology. Beginning with the fall of the 2016-2017 school year, the district equipped teachers and all middle school students with iPads and supported the expansion of personalized learning in blended environments.

"It has been exciting to see how much our learning has transformed. We are personalizing learning and addressing equity and access issues. Teachers are supporting each other and the individual needs of students," said Jennifer Bessolo, South MS principal.

With the middle schools equipped with 1:1 iPads, the district's two high schools formed a team to investigate, plan and develop a recommendation for grades 9-12. The team visited other high schools, attended training and explored various tools, including iPads and laptops. A nine-week pilot project equipped a limited number of high school classrooms with 1:1 student technology: iPads at Free State High and MacBooks at Lawrence High to start. In mid-October, the high schools swapped devices. The pilot project helped to inform the high schools' recommendation to the school board that MacBooks be provided all high school students in the fall of 2017. The board approved that 1:1 plan in February.

A 2014 research report from the Alliance for Excellent Education and the Stanford Center for Opportunity Policy in Education, *Using Technology to Support At-Risk Students' Learning*, indicates technology, when implemented properly, can help boost student engagement and produce significant gains in achievement, particularly among at-risk students.

Thomas C. Murray, director of innovation for Future Ready Schools, a project of the Alliance for Excellent Education, writes in *Schools of the Future*, that in a Future Ready district:



- ◆ curriculum, instruction, and assessment are research-based, data-informed and tightly aligned to standards,
- ◆ technology provides access to high-quality, ongoing, job-embedded professional learning for teachers,
- ◆ time and space become variables to support personalized learning,
- ◆ a robust and reliable technology infrastructure is in place,
- ◆ funding decisions support the comprehensive educational strategy of anytime, anywhere learning,
- ◆ and community partnerships advance education goals.

"Today's students, regardless of ZIP code, both need and deserve greater opportunity than the traditional education structure has provided in the past. This is an educational and economical issue that will have a lasting impact on generations to come. Time is of the essence. It is our obligation to prepare students for their future," writes Murray.

"Our learning goal is to revolutionize our teaching. It's no secret that apps and mobile devices have changed our lives," said Jerri Kemble, assistant superintendent of technology and innovation. "Our focus has been on how instruction becomes more effective, how we personalize learning for students and how technology integration supports those efforts."

The 2013 bond issue funded facility improvements that support Learning Forward, Future Ready by providing flexible learning spaces, primarily at elementary schools, moveable furniture and a robust technology infrastructure. The May 2017 bond election extends the benefits of school environments conducive to personalized learning to all middle and high schools.

PANDA

e
D
i
a
t
r
i
c



D
O
L
E
S
C
E
N
T

Medicine. P. A.

TERRANCE RIORDAN, MD
BETH RUNDQUIST, MD
MARSHALL KELLEY, MD
WACO GOODNIGHT, MD
JONATHAN MIKAIL, MD
GRETCHEN WELLS, APRN
CINDY MAST, PA-C

346 MAINE STREET
LAWRENCE, KS 66044
&
4824 QUAIL CREST PLACE
LAWRENCE, KS 66049

WWW.PANDAPEDS.COM
PHONE: (785) 842-4477
FAX: (785) 842-7433



**INDIVIDUAL ATTENTION.
AFFORDABLE EDUCATION.**

**SCHEDULE A
VISIT!**

Saint Mary has helped students find their purpose for over 90 years. At USM, Lawrence grads will benefit from:

- A Princeton Review **Best Midwestern College***
- Over 30 majors, including **top-notch health care programs, business, accounting, pre-engineering, cyber security, and more**
- **One-on-one attention** from expert faculty
- **Generous financial aid**—scholarships of up to \$56,000 over four years for qualified students
- The **college sports experience**, with 18 varsity sports, including men's and women's wrestling

*From the Princeton Review's Best Regional Colleges, 2017.
©2016 TPR Education IP Holdings, LLC.

SCHEDULE A VISIT TODAY!
UNIVERSITY of SAINT MARY
stmary.edu/Lawrence

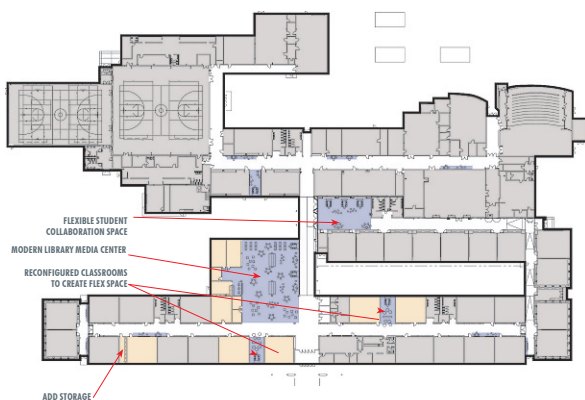
WEST MIDDLE SCHOOL

\$9.8 Million

West Middle School, built in 1960, needs a new heating, ventilation and air conditioning system. While they may not sound as exciting as new classrooms, HVAC systems regulate the temperature, air quality and comfortability of a school, which in turn affects student and staff wellness and success. The energy-efficient, high-performance building systems to be installed in secondary schools as a result of the bond issue will not only pay for themselves in a few years, it is anticipated they will generate more than \$100,000 annually in utility costs savings. When the district reduces its utility costs, those General Fund savings can be redirected to support student instruction and teacher needs.

Approx. 17,500 sq. ft. of renovation

- Reconfigure classrooms
- Create flexible student collaboration spaces
- Add storage
- Modernize library media center
- Renovate restrooms and locker rooms
- Upgrade infrastructure and install energy-efficient, high-performance building systems



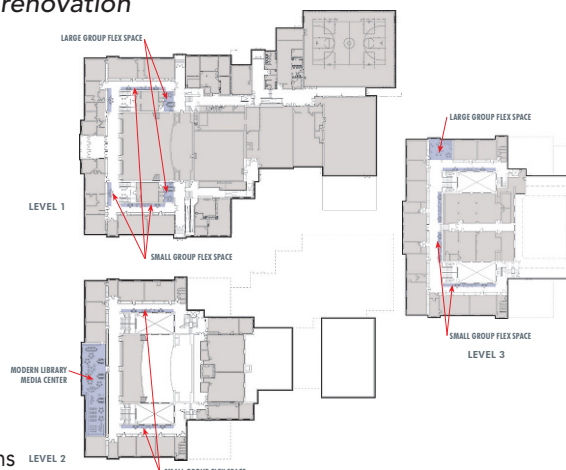
LIBERTY MEMORIAL CENTRAL MIDDLE SCHOOL

\$4.3 Million

Built as Liberty Memorial High School in 1923, Liberty Memorial Central Middle School installed a new HVAC system two years ago, as part of the district's Capital Improvement Plan. The district structures bond issue improvements in concert with capital planning to get taxpayers the most bang for their buck. Bond election improvements planned for LMCMS include the creation of additional flexible student collaboration spaces to support personalized anytime, anywhere learning, modernization of the library media center with preservation of key historic elements and upgrades to the auditorium stage.

Approx. 6,500 sq. ft. of renovation

- Incorporate flexible student collaboration spaces
- Reconfigure classroom and office space on 1st and 3rd floors
- Modernize library media center
- Improve auditorium stage
- Renovate restrooms and locker rooms
- Upgrade infrastructure and install energy-efficient, high-performance building systems



You Swipe WE GIVE.

#MoneyForSchools

Every purchase you make with a *Free State* or *LHS* debit card raises money for Lawrence Public Schools—without costing you a dime.

Learn more at TruityCU.org/SpiritCard



3400 W 6th St | 1300 W 23rd St.
2221 W 31st St. | 785.749.2224
*Some restrictions apply.

TRUITY
CREDIT UNION

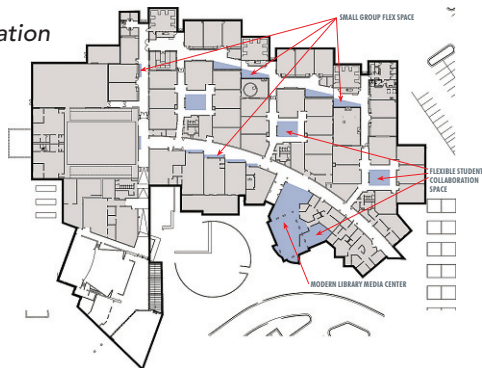
SOUTHWEST MIDDLE SCHOOL

\$4.3 Million

Southwest Middle School, built in 1994, needs some roof repair and replacement and a new fire alarm system. Southwest's project also includes some of the same improvements as the other middle schools: providing flexible spaces for students to collaborate, create and innovate, and renovations to restrooms and locker rooms. The plan proposes removing a wall in the library to enlarge the existing maker space, providing furniture solutions for breakout spaces in each grade-level pod and updating the school's information display.

Approx. 3,000 sq. ft. of renovation

- Modernize library media center
- Create additional student collaboration spaces
- Renovate restrooms and locker rooms
- Upgrade infrastructure and install energy-efficient, high-performance building systems



SOUTH MIDDLE SCHOOL

\$1.8 Million

As the district's newest school, South Middle School, which opened in 2007, doesn't need as much work. The facilities master plan proposes minor renovations to support the 21st-century learning already beginning to occur there. The proposal calls for the removal of walls separating its fairly traditional library space and under-utilized multi-purpose room from the corridors to open these spaces to provide flexible student collaboration areas.

Physical education and athletics locker rooms in all of the secondary schools are equipped with group showers that are underutilized due to a lack of privacy. Group showers in both high schools and all middle schools will be replaced with individual shower stalls and changing areas, and gender-neutral restrooms will be provided.

Approx. 3,000 sq. ft. of renovation

- Modernize library media center
- Create additional student collaboration spaces
- Renovate restrooms and locker rooms
- Upgrade infrastructure and install energy-efficient, high-performance building systems



LAWRENCE COLLEGE AND CAREER CENTER - \$600,000

The bond issue includes funding for minor renovation at the Lawrence College and Career Center. The district intends to finish existing educational space to support moving its culinary arts program from Holcom to the College and Career Center, and to support a future connection to the Boys and Girls Club Teen Center. Through this partnership, the opportunity exists to not only serve more teens in after-school programming, which is a critical need in the community, but to also utilize the Club's facility during the school day for high school students' instructional needs. After school hours, the Boys and Girls Club would have access to portions of the College and Career Center for its programming.

TECHNOLOGY - \$200,000

The district plans to upgrade data and information management systems, such as BPlus and Skyward, to enable these systems used by teachers, staff and parents for a variety of essential functions (e.g. financial, personnel and student record keeping, including attendance and grades) to continue to meet operational needs.

BOWLS • PLATTERS • TILES • PET DISHES • PLANT POTS



WE OFFER PORTABLE PARTIES "TO GO"

Our Studio is Your Studio
Open Every Day All Summer

Pottery & Fused Glass Projects & Parties
Drop Off Kids 9+ yrs with Friend(s)
for Creative Kid's Projects \$6-\$12

2 for 1 paint fee w/coupon
exp 9/30/17

Sunfire Ceramics
1002 New Hampshire 749-2828

EVENING HOURS & WINE FRIENDLY STUDIO
ADULT PARTIES \$12 PER GUEST INC POTTERY

WWW.SUNFIRECERAMICS.COM FACEBOOK.COM/SUNFIRECERAMICS

BOWLS • PLATTERS • TILES • PET DISHES • PLANT POTS



Taking care of patients from birth to 21

Lawrence Pediatrics, p.a.

Dr. Kirsten Evans, M.D.
Dr. Kristen Jacobs, M.D.
Dr. Malani Kuiper, M.D.

3310 Clinton Parkway Court
(785) 856-9090 • www.lawrencepeds.com

Over 20 Years Serving Lawrence and Eastern Kansas



Dr. Philip Gaus



Dr. Justin Labart



4901 Legends Dr. Lawrence, KS, 66049
 ☎ 785.856.6010 📠 785.841.6480

Caring, Compassionate Staff

Extractions • Wisdom Tooth Removal • Implants
 Corrective Surgery • General Anesthesia

visit us at www.gausdds.com

Questions and Answers

About the Mill Levy and the Tax Impact of the Bond Election

Q: Did the school board keep its 2013 election promise for a no-tax-increase bond issue?

A: Yes! The bond and interest mill levy actually decreased from 10.577 to 9.500 mills from the 2012-13 school year to the present.

Q: How will the 2017 bond election affect the mill levy?

A: The district's total mill levy is 53.360 mills after a decrease of 3.546 mills from last year's total. The 2017 bond election would result in an estimated increase of 2.4 mills.

Q: How does the Lawrence school district's level of debt compare to others?

A: The District Site Council selected 21 "peer districts" of similar size or proximity for data comparisons. Lawrence USD 497 has among the highest enrollments (the seventh-largest in the state) and assessed valuations and among the lowest ratios of debt-to-assessed valuation.

Q: What is the tax impact of the bond election?

A: The bond election's success would increase local property taxes by an estimated 2.4 mills. This equates to a \$55/year annual tax increase (\$4.60/month) for the owner of a home assessed at \$200,000. (Add/subtract \$2.76 in annual taxes for every \$10,000 in assessed value.)

Q: Would the tax increase continue during the life of the bonds?

A: No. The district will wrap payments on the new 20-year bonds (with an est. interest rate of 3.5%) around existing bond payments. As existing bonds are paid, the payments on new bonds would increase to maintain relatively low payments on district debt. As old bonds are retired and the county's assessed valuation increases, fewer mills would be required to generate the amount needed for bond and interest payments.

Learn more at www.usd497.org

Energy-Efficient, High-Performance Schools

Produce Savings and Promote Wellness and Success

By Marcel Harmon, Board of Education President

One of the primary goals of the facilities master planning process has been to vision and budget for energy-efficient, high-performance schools that promote student and staff wellness and success. These improvements also generate operational, maintenance and energy savings. The renovation of Lawrence High School alone is estimated to reduce the energy consumed by up to 3,700 MMBTU per year, and the associated greenhouse gas emissions produced by up to 509 metric tons per year, when compared to a new, conventionally built high school of the same square footage. The district estimates the energy-efficient measures planned for all of the secondary schools included in this bond issue will save \$100,000/year in utility, operational and maintenance costs. These are General Fund savings that can then be redirected to student instruction and teacher and staff needs.

Modernizing facilities, and then eliminating the occurrences of subsequent deferred maintenance, reduces operational and maintenance costs over the long term. Reducing constant Band-Aid fixes and periodic major equipment failures and/or replacements, gives facilities and operations staff a greater ability to operate in a proactive versus reactive manner. Increasing operational efficiency eases stress on personnel in departments that already are understaffed.

According to *State of Our Schools: America's K-12 Facilities*, a 2016 joint publication of the 21st Century School Fund, the National Council on School Facilities and the U.S. Green Building Council, school facilities have a direct impact on student learning, student and staff health, and school finances, but too many students attend school facilities that fall short of providing 21st-century learning environments because essential maintenance and capital improvements are underfunded.

Most understand that the quality of the built environment affects occupant satisfaction and comfort. Decades of multi-disciplinary research demonstrate how the built environment affects occupant productivity/performance and health. A large body of that research has been conducted

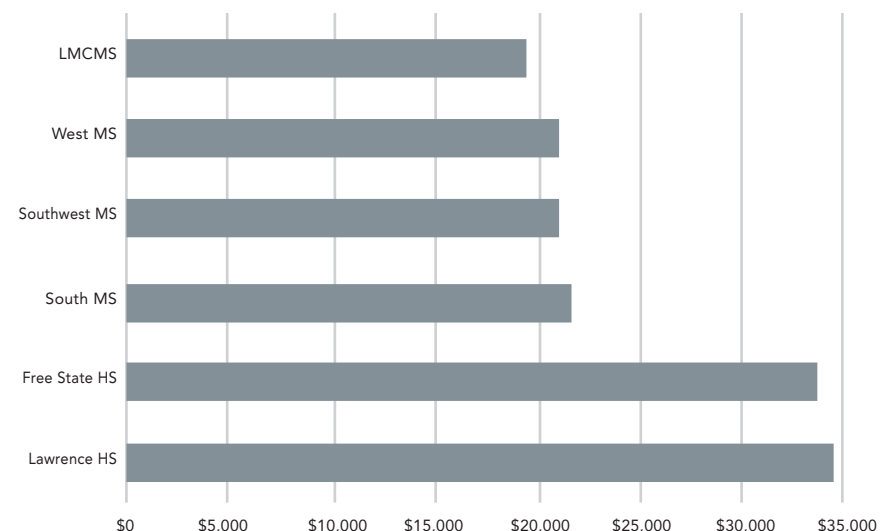
within educational environments, and has shown school facilities to influence test scores, the rate of student learning, mental function, memory recall, the ability to focus on tasks, attendance, physical symptoms of stress, and even disciplinary action. Positive benefits compound over the course of students' PreK-12 careers, assuming facilities are well maintained.

Some students are more susceptible to various negative aspects of indoor environmental quality. Students considered "at risk" in relationship to their socio-economic status and/or academic, social, emotional, behavioral or physical challenges are disproportionately impacted by facilities in poor condition, as their relative limited resources, limited outside support, physical and/or psychological challenges already are a drain on their mental and physical energies. With the additional distractions and hardships found in a poor physical environment greatly reduced, students have more of their mental and physical energies available to devote to learning.

Lots of variables shape student and staff productivity/performance and health. Communities and school districts can address the built environment relatively easily compared to many other variables. Inadequate physical environments, as well as the inadequate maintenance and operations of those environments, negatively impacts what goes on in the classroom – it hurts students.

The May 2, 2017, School Bond Mail-Ballot Election attempts to address decades of deferred maintenance that face Lawrence (and many of our state's and nation's) schools due in large part to a general underfunding of public education. At least in Lawrence, the school board and district are committed to finishing the process started with the support of the community in 2013 to improve schools and better meet the needs of students and teachers. With the final elementary school project at Pinckney wrapping up construction, the community is essentially halfway there, and now needs to turn its focus to providing energy-efficient, high performance secondary schools capable of providing high quality learning environments.

LED Lighting Upgrades Savings Analysis



ANNUAL ENERGY COST SAVINGS

Equates to 8-year simple payback compared to fluorescent lighting upgrades

Payback period based on first cost of LED system and energy and maintenance savings only. Assumes that the current lighting system does not need to be replaced.

City of Lawrence Energy Code - IECC2015/ASHRAE90.1 2013: Both codes require automatic daylight dimming in classrooms. If the lighting system needs to be replaced, the first cost of an LED system will be comparable to a new dimmable fluorescent system.

Lawrence Board of Education President Marcel Harmon's professional work as an anthropologist and engineer with Forte Building Science, a division of M.E. GROUP, focuses on improving the performance and sustainability of buildings while also improving the quality of the occupant experience within the built environment.

HOW DO I VOTE?

The Douglas County Clerk's Office will mail ballots to all registered voters in USD 497 on April 12.

The ballot contains a single question:

Shall Unified School District No. 497, Douglas County, Kansas, (Lawrence), issue general obligation bonds in an amount not to exceed \$87,000,000 to pay the costs to: construct additions to and renovate, improve, repair, equip and furnish Lawrence High School, the other existing secondary schools including Lawrence Free State High School, Liberty Memorial Central Middle School, South Middle School, Southwest Middle School, West Middle School, and the College and Career Center; to make technology improvements throughout the district; to undertake all other necessary improvements related thereto; and to pay fees and expenses related thereto; all pursuant to the provisions of K.S.A. 10-101 et seq., K.S.A. 25-431 et seq., K.S.A. 25-2018(f), K.S.A. 72-6761 and K.S.A. 75-2315 et seq.?

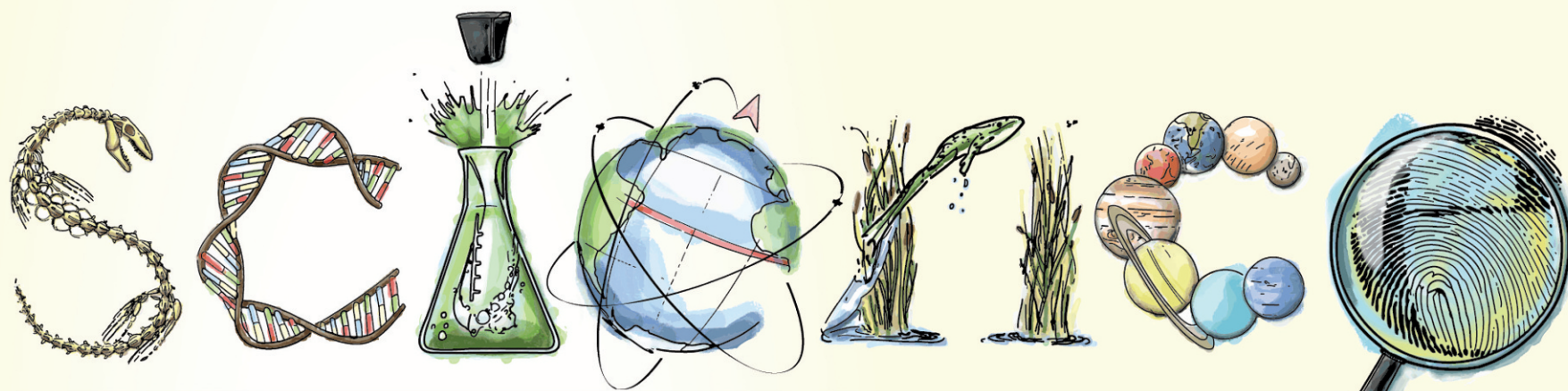
- ☐ To vote in favor, vote "YES"
- ☐ To vote against, vote "NO"

MARK IT, SIGN IT AND MAIL IT BACK

1. Mark your ballot in black or blue ink.
2. Sign the back of the envelope.
3. Mail your completed ballot to the Douglas County Clerk's Office in the postage-paid envelope provided.

Completed ballots must be RECEIVED (not postmarked) in the Douglas County Clerk's Office by noon on May 2.

Learn more at www.usd497.org.



2017 SUMMER DAY CAMPS



Registration now **open!**
closes May 26

ages 8-11
\$80 per camp
(scholarships available)

Dinosaur Detectives • Monday, June 5

Space Odyssey • Wednesday, June 7

Aquatic Biology • Friday, June 9