

# 2016 Graduation Rate

LHS/FSHS only

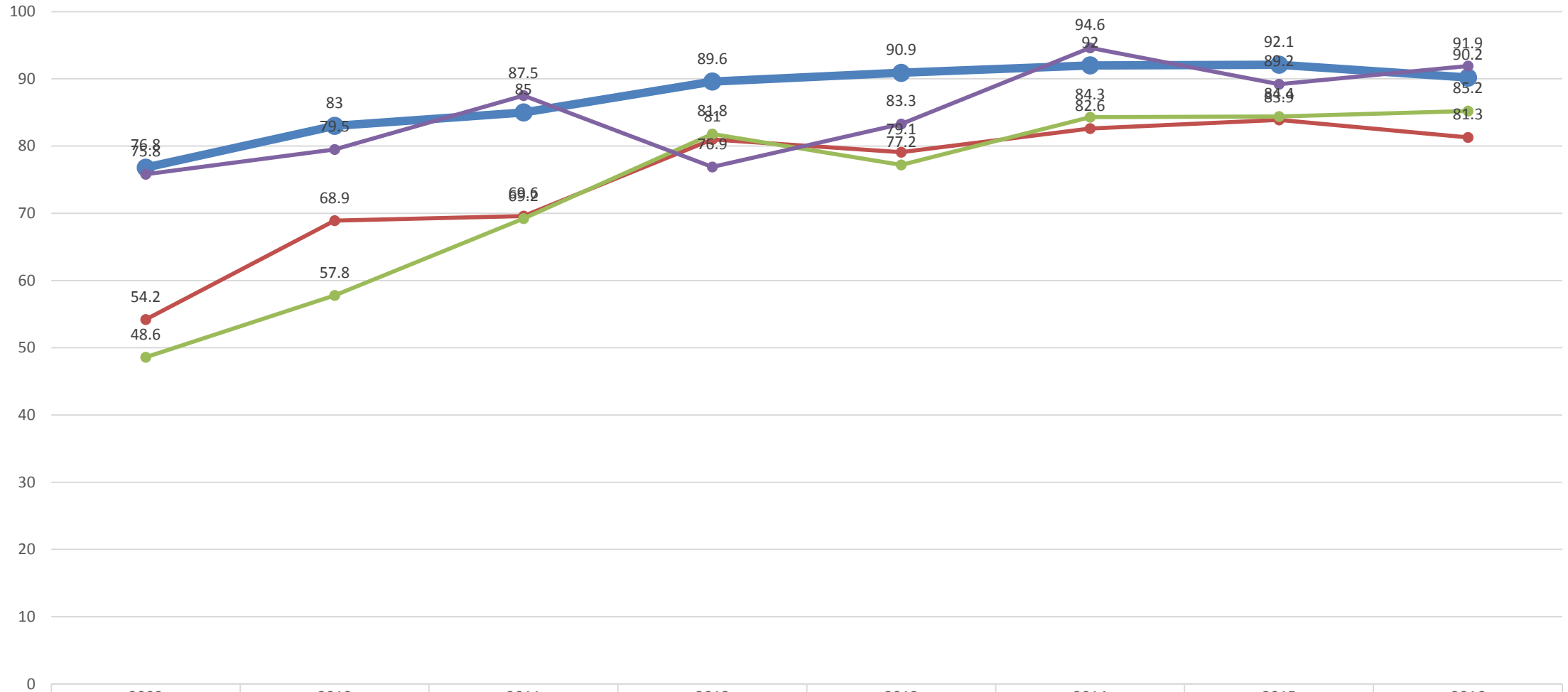
Students Entering the 4-year Cohort in 2012-13 (Grade 9) and  
Graduating in 2015-16 (Grade 12)

# What is the 4-year Cohort and How Is The Graduation Rate Calculated?

- A student is counted in the 4 year cohort when they are classified as a 9<sup>th</sup> grader for the first time.
  - At that time, students have 4 years to graduate “on time”
  - Students are given until 9/30 following the graduation of their cohort to complete any credit deficits and still be “on time”
- Cohort is adjusted for students enrolling over the 4 years and for students exiting with approved exit codes
- Students who exit to “home school”, non-accredited private schools, GED programs, or simply discontinue their education are counted negatively in the graduation rate percentage

## Graduation Rate: 2009 - 2016

### LHS and FSHS - Students Graduating in the 4-Year Cohort

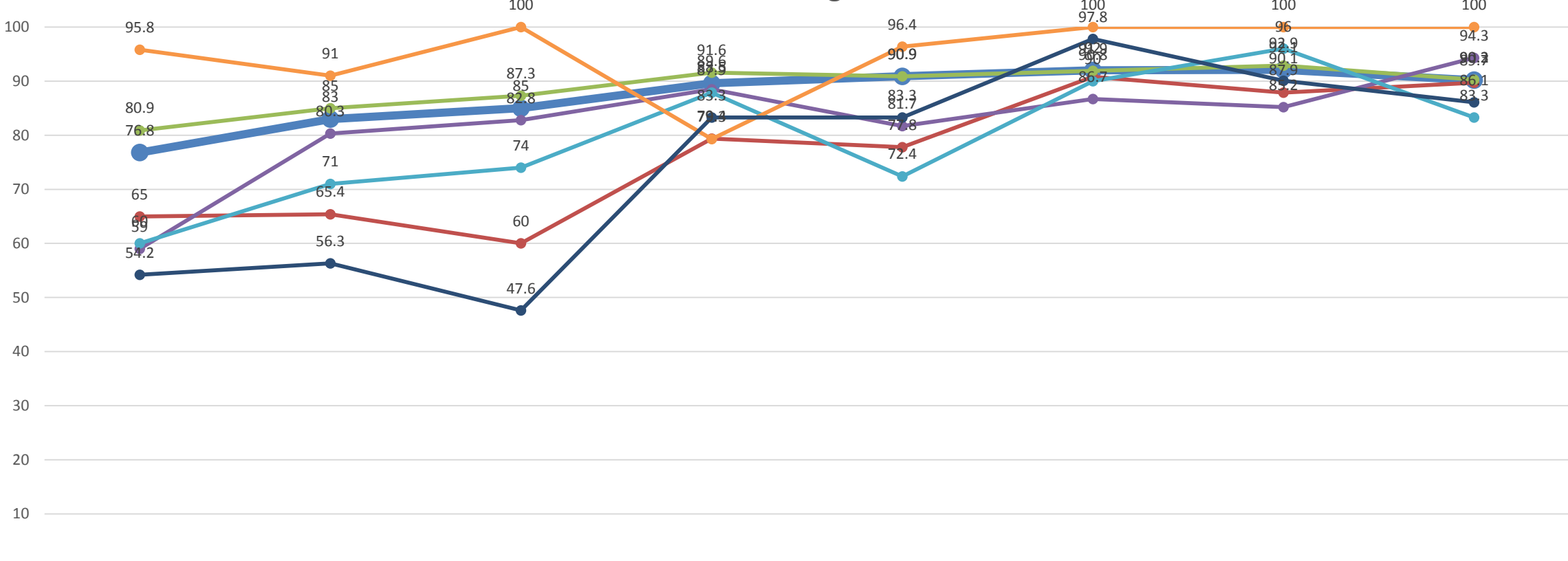


	2009	2010	2011	2012	2013	2014	2015	2016
ALL	76.8	83	85	89.6	90.9	92	92.1	90.2
Low SES	54.2	68.9	69.6	81	79.1	82.6	83.9	81.3
St.w/Dis	48.6	57.8	69.2	81.8	77.2	84.3	84.4	85.2
ELL	75.8	79.5	87.5	76.9	83.3	94.6	89.2	91.9

● ALL   
 ● Low SES   
 ● St.w/Dis   
 ● ELL

# Graduation Rate by Race/Ethnicity: 2009 - 2016

## LHS and FSHS - Students Graduating in the 4-Year Cohort



	2009	2010	2011	2012	2013	2014	2015	2016
ALL	76.8	83	85	89.6	90.9	92	92.1	90.2
Hispanic	65	65.4	60	79.4	77.8	90.8	87.9	89.7
White	80.9	85	87.3	91.6	90.9	91.9	92.9	90.3
Black	59	80.3	82.8	88.5	81.7	86.7	85.2	94.3
Am. Indian	60	71	74	87.9	72.4	90	96	83.3
Asian	95.8	91	100	79.3	96.4	100	100	100
Multi	54.2	56.3	47.6	83.3	83.3	97.8	90.1	86.1

● ALL   
 ● Hispanic   
 ● White   
 ● Black   
 ● Am. Indian   
 ● Asian   
 ● Multi

		Number in Cohort	Number Graduating	Graduation Rate (%)
2016	ALL	752	678	90.2
	Male	368	327	88.9
	Female	384	351	91.4
	Hispanic	68	61	89.7
	White	525	474	90.3
	Black	53	50	94.3
	Native	18	15	83.3
	Asian	13	13	100
	Multi	72	62	86.1
	Low SES	316	257	81.3
	SWD	108	92	85.2
	ELL	37	34	91.9

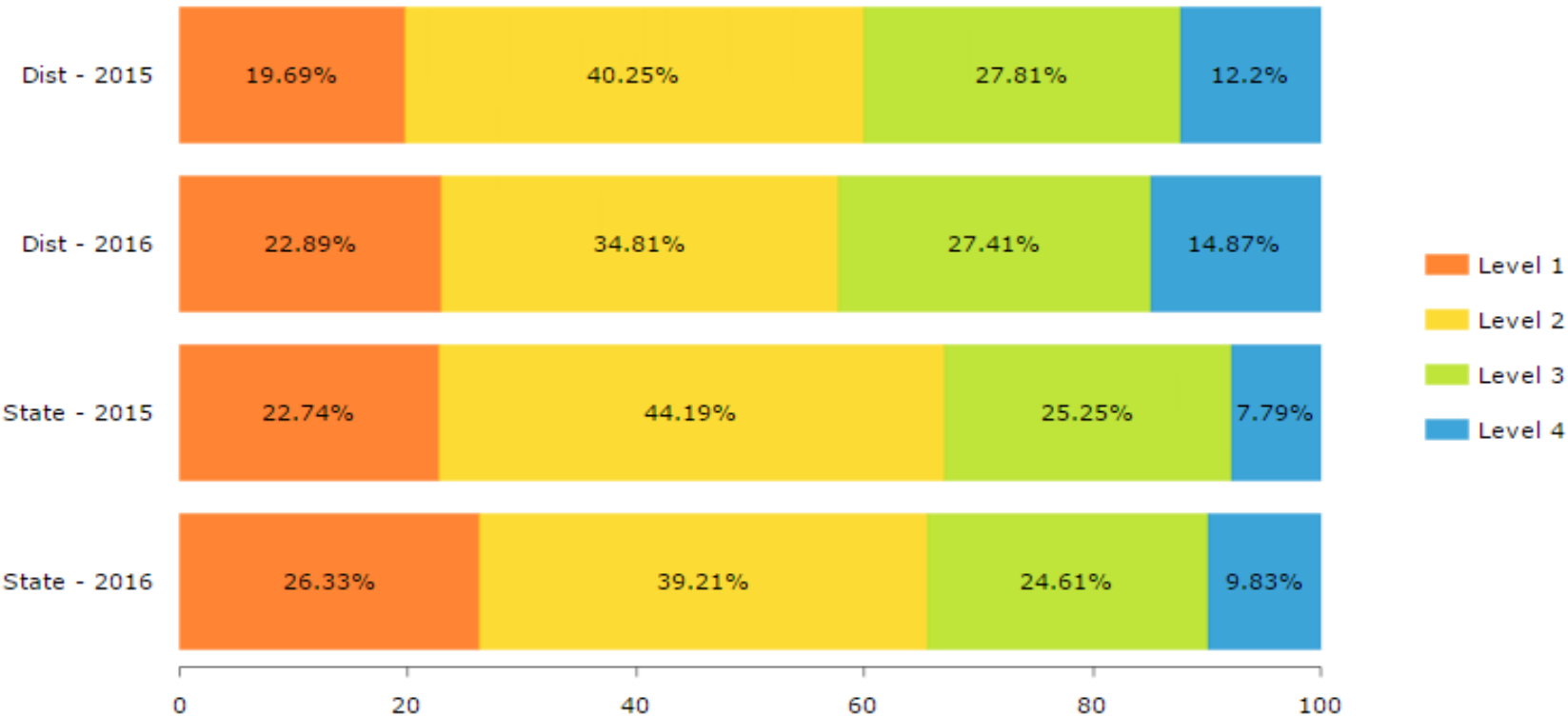
# 2016 Kansas Assessment Program (KAP) Performance Reports

# Mathematics

## Performance Level Reports

**Subject:** Math   **Subgroup:** All Students   **Grade Level:** All Grades   **Student Population:** Accountability

\*To protect student privacy, when a subgroup has fewer than 10 students the data is not displayed.

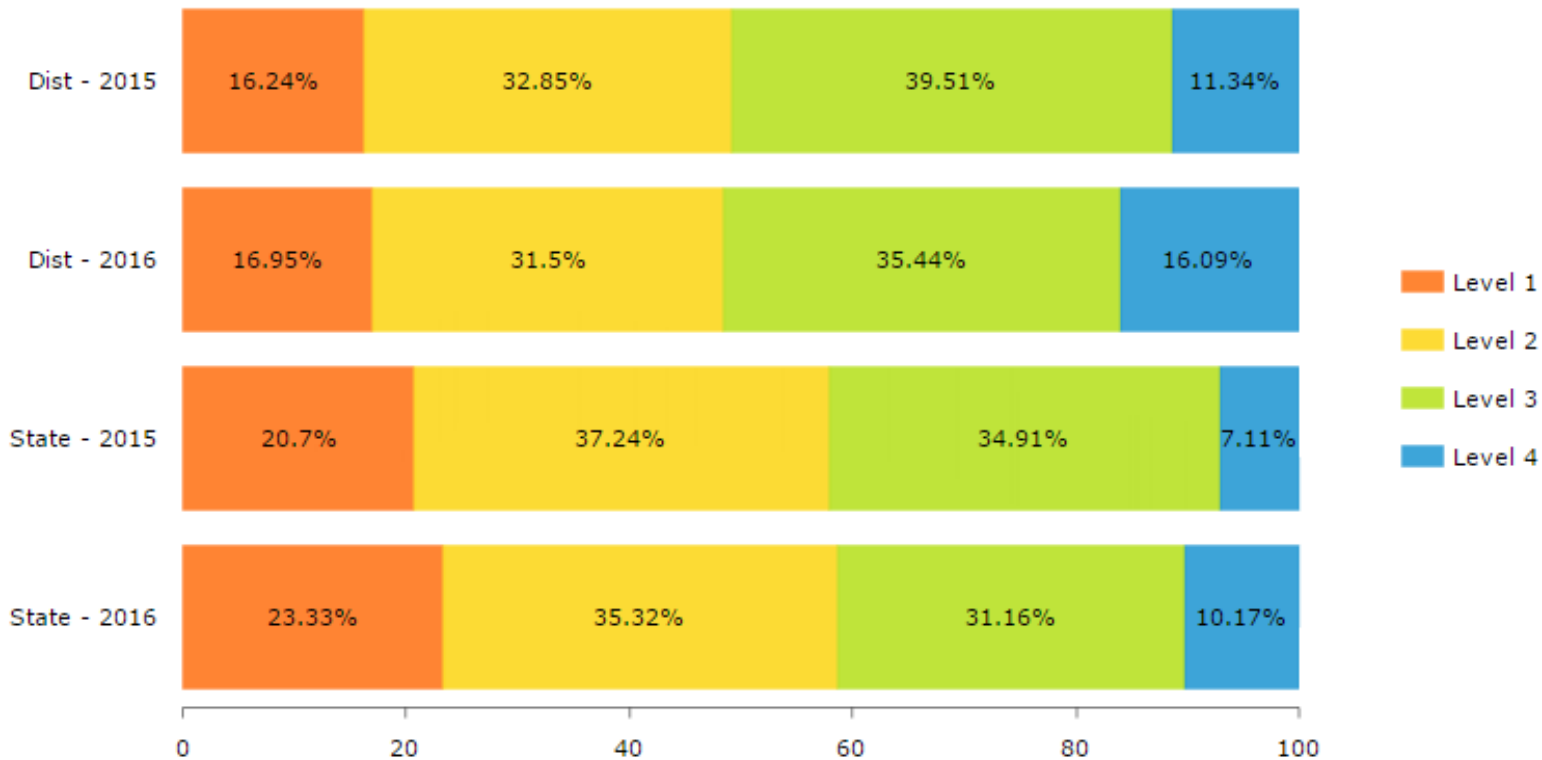


# English Language Arts (ELA)

## Performance Level Reports

**Subject:** ELA **Subgroup:** All Students **Grade Level:** All Grades **Student Population:** Accountability

\*To protect student privacy, when a subgroup has fewer than 10 students the data is not displayed.





# Comparison of 2015 and 2016

## Mathematics

		% Level 1	% Level 2	% Level 3	% Level 4
2015	District	19.69	40.25	27.81	12.2
2016	District	22.89	34.81	27.41	14.87
		% Level 1	% Level 2	% Level 3	% Level 4
2015	State	22.74	44.19	25.25	7.79
2016	State	26.33	39.21	24.61	9.83

## ELA

		% Level 1	% Level 2	% Level 3	% Level 4
2015	District	16.24	32.85	39.51	11.34
2016	District	16.95	31.5	35.44	16.09
		% Level 1	% Level 2	% Level 3	% Level 4
2015	State	20.7	37.24	34.91	7.11
2016	State	23.33	35.32	31.16	10.17