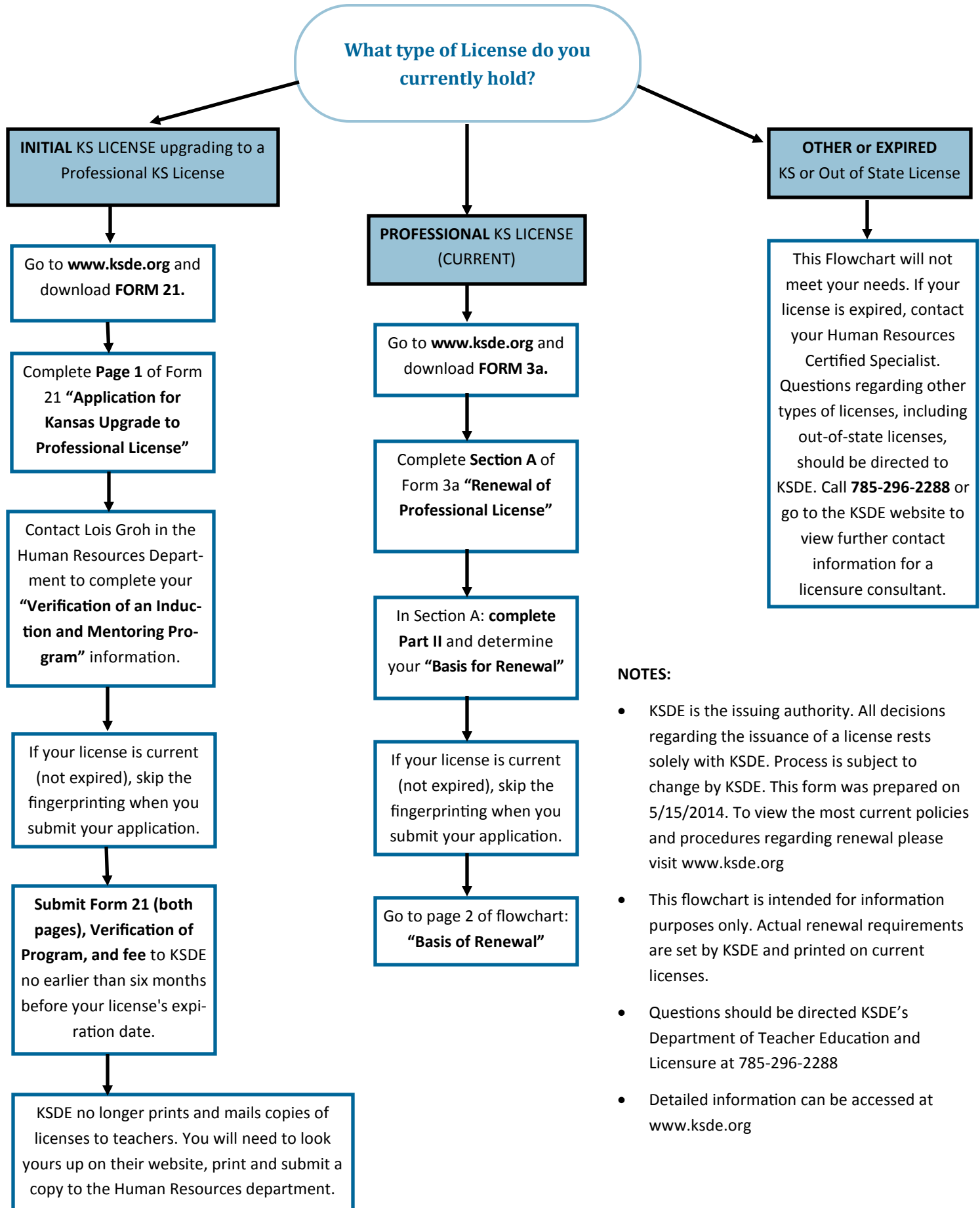


Navigating Licensure Page 1.

Note: This resource is a supplement to help you understand the relicensure requirements printed on your license and described on the KSDE website www.ksde.org



NOTES:

- KSDE is the issuing authority. All decisions regarding the issuance of a license rests solely with KSDE. Process is subject to change by KSDE. This form was prepared on 5/15/2014. To view the most current policies and procedures regarding renewal please visit www.ksde.org
- This flowchart is intended for information purposes only. Actual renewal requirements are set by KSDE and printed on current licenses.
- Questions should be directed to KSDE's Department of Teacher Education and Licensure at 785-296-2288
- Detailed information can be accessed at www.ksde.org

Navigating Licensure Page 2.

Renewing your Professional License.

